

For Research Use Only

RUVBL2 Polyclonal antibody

Catalog Number: 10195-1-AP

Featured Product

20 Publications



Basic Information

Catalog Number: 10195-1-AP	GenBank Accession Number: BC000428	Purification Method: Antigen affinity purification
Size: 150ul, Concentration: 500 µg/ml by Nanodrop;	GeneID (NCBI): 10856	Recommended Dilutions: WB 1:500-1:2000 IP 0.5-4.0 ug for IP and 1:500-1:1000 for WB
Source: Rabbit	Full Name: RuvB-like 2 (E. coli)	IHC 1:20-1:200
Isotype: IgG	Calculated MW: 51 kDa	IF 1:200-1:800
Immunogen Catalog Number: AG0253	Observed MW: 51 kDa	

Applications

Tested Applications:
IF, IHC, IP, WB, ELISA

Cited Applications:
IF, IHC, IP, WB

Species Specificity:
human, mouse

Cited Species:
human, mouse

Note-IHC: suggested antigen retrieval with TE buffer pH 9.0; (*) Alternatively, antigen retrieval may be performed with citrate buffer pH 6.0

Positive Controls:

WB: C2C12 cells, Daudi cells, HeLa cells, HepG2 cells

IP: HeLa cells, mouse brain tissue

IHC: human testis tissue, human kidney tissue, human placenta tissue, human skin tissue, human brain tissue, human heart tissue, human lymphoma tissue, human gliomas tissue, human spleen tissue, human lung tissue, human ovary tissue

IF: HepG2 cells,

Background Information

RuvB-like 2 (E. coli) (RUVBL2, synonyms: ECP51, TIP48, CGI-46, TIP49B) is the second human homologue of the bacterial RuvB gene. Bacterial RuvB protein is a DNA helicase essential for homologous recombination and DNA double-strand break repair. Functional analysis showed that RUVBL2 has both ATPase and DNA helicase activities.

Notable Publications

Author	Pubmed ID	Journal	Application
Tao Yan	31572066	Cancer Cell Int	IHC
Franklin C Harwood	30258985	Sci Adv	WB
Jonathan Bizarro	25404746	J Cell Biol	WB

Storage

Storage:

Store at -20°C. Stable for one year after shipment.

Storage Buffer:

PBS with 0.02% sodium azide and 50% glycerol pH 7.3.

Aliquoting is unnecessary for -20°C storage

*** 20ul sizes contain 0.1% BSA

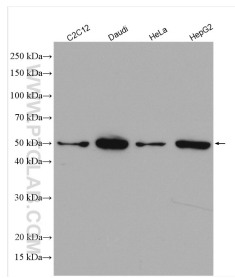
For technical support and original validation data for this product please contact:

T: 1 (888) 4PTGLAB (1-888-478-4522) (toll free in USA), or 1(312) 455-8498 (outside USA)

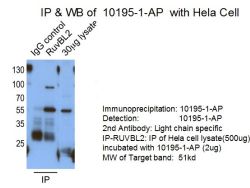
E: proteintech@ptglab.com
W: ptglab.com

This product is exclusively available under Proteintech Group brand and is not available to purchase from any other manufacturer.

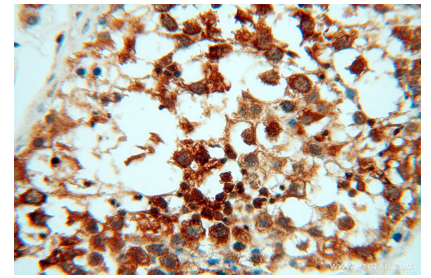
Selected Validation Data



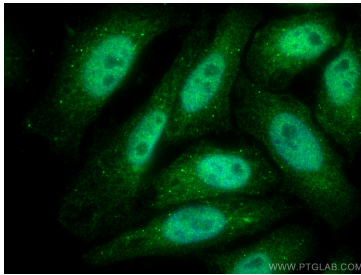
Various lysates were subjected to SDS PAGE followed by western blot with 10195-1-AP (RUVBL2 antibody) at dilution of 1:1000 incubated at room temperature for 1.5 hours.



IP result of anti-RUVBL2 (10195-1-AP for IP and Detection).



Immunohistochemical analysis of paraffin-embedded human testis using 10195-1-AP (RUVBL2 antibody) at dilution of 1:50 (under 40x lens).



Immunofluorescent analysis of (4% PFA) fixed HepG2 cells using RUVBL2 antibody (10195-1-AP) at dilution of 1:400 and CoraLite®488-Conjugated AffiniPure Goat Anti-Rabbit IgG(H+L).