

For Research Use Only

WTAP Polyclonal antibody

Catalog Number: 10200-1-AP

Featured Product

60 Publications



Basic Information

Catalog Number:

10200-1-AP

Size:

150ul, Concentration: 500 ug/ml by Nanodrop;

Source:

Rabbit

Isotype:

IgG

Immunogen Catalog Number:

AG0259

GenBank Accession Number:

BC000383

GeneID (NCBI):

9589

UNIPROT ID:

Q15007

Full Name:

Wilms tumor 1 associated protein

Calculated MW:

45 kDa

Observed MW:

50-55 kDa

Purification Method:

Antigen affinity purification

Recommended Dilutions:

WB 1:2000-1:16000

IP 0.5-4.0 ug for 1.0-3.0 mg of total protein lysate

IHC 1:500-1:2000

Applications

Tested Applications:

WB, IHC, IP, ELISA

Cited Applications:

WB, IHC, IF, IP, CoIP, RIP

Species Specificity:

human, mouse, rat

Cited Species:

human, mouse, rat

Note-IHC: suggested antigen retrieval with TE buffer pH 9.0; (*) Alternatively, antigen retrieval may be performed with citrate buffer pH 6.0

Positive Controls:

WB: HeLa cells, Jurkat cells, HepG2 cells, MOLT-4 cells, L02 cells, K-562 cells

IP: Jurkat cells, HEK-293 cells

IHC: human intrahepatic cholangiocarcinoma tissue, human stomach tissue

Background Information

WTAP, also named as KIAA0105 and hFL(2)D, is previously identified as a protein associated with Wilms' tumor-1 (WT-1) protein that is essential for the development of the genitourinary system. It is a Pre-mRNA-splicing regulator protein. It is a regulatory subunit of the WMM N6-methyltransferase complex which plays a role in the efficiency of mRNA splicing and processing and mRNA stability. It is required for accumulation of METTL3 and METTL14 to nuclear speckle. MW of WTAP is 50-55 kDa due to phosphorylation.

Notable Publications

Author	Pubmed ID	Journal	Application
Yong Ge	34467630	EMBO Rep	WB,IP
Yuanpei Li	36289222	Nat Commun	WB,IHC,IF
Lingfang Wang	36288717	Cell Rep	WB

Storage

Storage:

Store at -20°C. Stable for one year after shipment.

Storage Buffer:

PBS with 0.02% sodium azide and 50% glycerol pH 7.3.

Aliquoting is unnecessary for -20°C storage

*** 20ul sizes contain 0.1% BSA

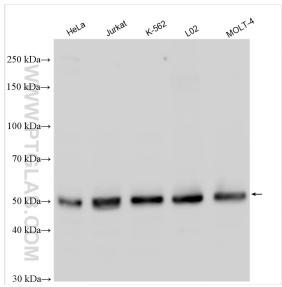
For technical support and original validation data for this product please contact:

T: 1 (888) 4PTGLAB (1-888-478-4522) (toll free in USA), or 1(312) 455-8498 (outside USA)

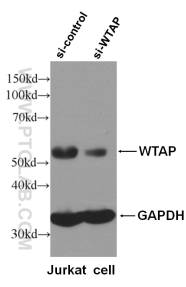
E: proteintech@ptglab.com
W: ptglab.com

This product is exclusively available under Proteintech Group brand and is not available to purchase from any other manufacturer.

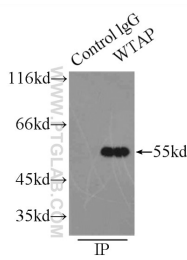
Selected Validation Data



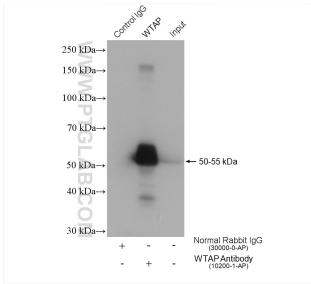
HeLa cells were subjected to SDS PAGE followed by western blot with 10200-1-AP (WTAP antibody) at dilution of 1:8000 incubated at room temperature for 1.5 hours.



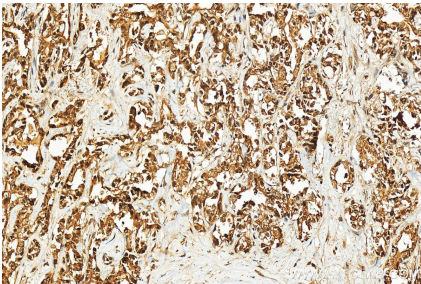
WB result of WTAP specific antibody (10200-1-AP, 1:6000) with si-control and si-WTAP transfected Jurkat cells.



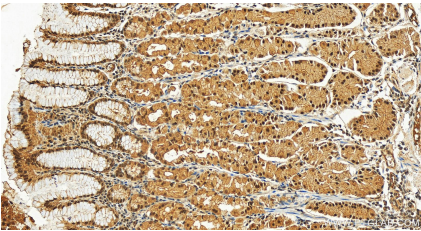
IP result of anti-WTAP (IP:10200-1-AP, 3ug; Detection:10200-1-AP 1:500) with HEK-293 cells lysate 2500ug.



IP result of anti-WTAP (IP:10200-1-AP, 4ug; Detection:10200-1-AP 1:8000) with Jurkat cells lysate 2280 ug.



Immunohistochemical analysis of paraffin-embedded human intrahepatic cholangiocarcinoma tissue slide using 10200-1-AP (WTAP antibody) at dilution of 1:1000 (under 20x lens). Heat mediated antigen retrieval with Tris-EDTA buffer (pH 9.0).



Immunohistochemical analysis of paraffin-embedded human stomach tissue slide using 10200-1-AP (WTAP antibody) at dilution of 1:800 (under 20x lens). Heat mediated antigen retrieval with Tris-EDTA buffer (pH 9.0).