

For Research Use Only

ARL4C Polyclonal antibody

Catalog Number: 10202-1-AP

Featured Product

9 Publications



Basic Information

Catalog Number: 10202-1-AP	GenBank Accession Number: BC001051	Purification Method: Antigen affinity purification
Size: 150ul, Concentration: 300 µg/ml by Nanodrop and 200 µg/ml by Bradford method using BSA as the standard;	GeneID (NCBI): 10123	Recommended Dilutions: WB 1:500-1:1000 IP 0.5-4.0 ug for IP and 1:500-1:1000 for WB
Source: Rabbit	Full Name: ADP-ribosylation factor-like 4C	IHC 1:50-1:500 IF 1:50-1:500
Isotype: IgG	Calculated MW: 21 kDa	
Immunogen Catalog Number: AG0246	Observed MW: 21-25 kDa	

Applications

Tested Applications: IF, IHC, IP, WB, ELISA	Positive Controls: WB : HUVEC cells, Jurkat cells, human brain tissue
Cited Applications: IF, IHC, WB	IP : HUVEC cells,
Species Specificity: human	IHC : human colon cancer tissue, human pancreas tissue
Cited Species: human, mouse	IF : HUVEC cells,

Note-IHC: suggested antigen retrieval with TE buffer pH 9.0; (*) Alternatively, antigen retrieval may be performed with citrate buffer pH 6.0

Background Information

Notable Publications

Author	Pubmed ID	Journal	Application
Jisoo S Han	32873638	Proc Natl Acad Sci U S A	WB, IF
Shigehisa Kubota	33092599	World J Surg Oncol	IHC
Taotao Sheng	34635154	Genome Med	WB

Storage

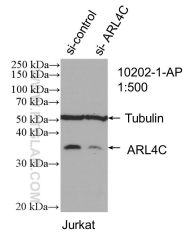
Storage:
Store at -20°C. Stable for one year after shipment.
Storage Buffer:
PBS with 0.02% sodium azide and 50% glycerol pH 7.3.
Aliquoting is unnecessary for -20°C storage

*** 20ul sizes contain 0.1% BSA

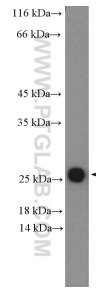
For technical support and original validation data for this product please contact:
T: 1 (888) 4PTGLAB (1-888-478-4522) (toll free in USA), or 1(312) 455-8498 (outside USA)
E: proteintech@ptglab.com
W: ptglab.com

This product is exclusively available under Proteintech Group brand and is not available to purchase from any other manufacturer.

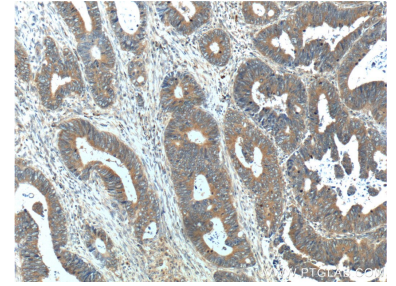
Selected Validation Data



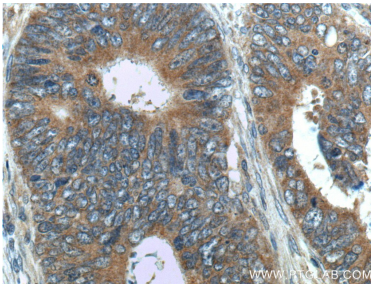
WB result of ARL4C antibody (10202-1-AP; 1:500; incubated at room temperature for 1.5 hours) with sh-Control and sh-ARL4C transfected Jurkat cells.



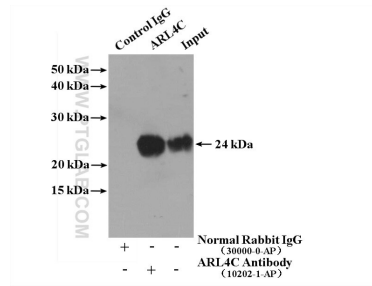
HUVEC cells were subjected to SDS PAGE followed by western blot with 10202-1-AP (ARL4C Antibody) at dilution of 1:600 incubated at room temperature for 1.5 hours.



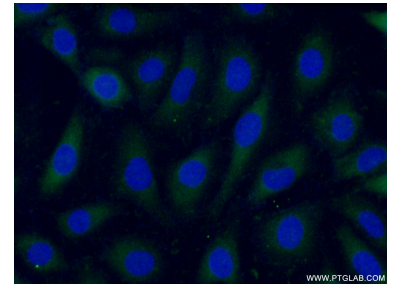
Immunohistochemical analysis of paraffin-embedded human colon cancer tissue slide using 10202-1-AP (ARL4C Antibody) at dilution of 1:200 (under 10x lens).



Immunohistochemical analysis of paraffin-embedded human colon cancer tissue slide using 10202-1-AP (ARL4C Antibody) at dilution of 1:200 (under 40x lens).



IP result of anti-ARL4C (IP:10202-1-AP, 4ug; Detection:10202-1-AP 1:500) with HUVEC cells lysate 3600 ug.



Immunofluorescent analysis of (-20°C Ethanol) fixed HUVEC cells using 10202-1-AP (ARL4C antibody) at dilution of 1:50 and Alexa Fluor 488-conjugated AffiniPure Goat Anti-Rabbit IgG(H+L).