

For Research Use Only

UBE2V1 Polyclonal antibody

Catalog Number: 10207-2-AP



Basic Information

Catalog Number:

10207-2-AP

Size:

150ul, Concentration: 600 ug/ml by Nanodrop and 253 ug/ml by Bradford method using BSA as the standard;

Source:

Rabbit

Isotype:

IgG

Immunogen Catalog Number:

AG0278

GenBank Accession Number:

BC000468

GeneID (NCBI):

7335

UNIPROT ID:

Q13404

Full Name:

ubiquitin-conjugating enzyme E2 variant 1

Calculated MW:

20 kDa

Observed MW:

20 kDa

Purification Method:

Antigen affinity purification

Recommended Dilutions:

WB 1:200-1:1000

Applications

Tested Applications:

WB, ELISA

Species Specificity:

human

Positive Controls:

WB : human spleen tissue, BxPC-3 cells

Background Information

UBE2V1 (Ubiquitin-conjugating enzyme E2 variant 1) is also named as CROC1, UBE2V, UEV1 and belongs to the ubiquitin-conjugating enzyme family. It has no ubiquitin ligase activity on its own and the UBE2V1-UBE2N heterodimer catalyzes the synthesis of non-canonical poly-ubiquitin chains that are linked through Lys-63. CROC1 transcripts in all human tissues examined, with highest levels in brain, skeletal muscle, and kidney (PMID:9305758). It has 5 isoforms produced by alternative splicing.

Storage

Storage:

Store at -20°C. Stable for one year after shipment.

Storage Buffer:

PBS with 0.02% sodium azide and 50% glycerol pH 7.3.

Aliquoting is unnecessary for -20°C storage

*** 20ul sizes contain 0.1% BSA

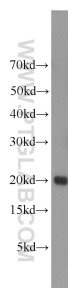
For technical support and original validation data for this product please contact:

T: 1 (888) 4PTGLAB (1-888-478-4522) (toll free in USA), or 1(312) 455-8498 (outside USA)

E: proteintech@ptglab.com
W: ptglab.com

This product is exclusively available under Proteintech Group brand and is not available to purchase from any other manufacturer.

Selected Validation Data



human spleen tissue were subjected to SDS PAGE followed by western blot with 10207-2-AP (UBE2V1 antibody) at dilution of 1:300 incubated at room temperature for 1.5 hours.