

Sam68 Polyclonal antibody

Catalog Number: 10222-1-AP

10 Publications

Basic Information

Catalog Number: 10222-1-AP	GenBank Accession Number: BC000717	Purification Method: Antigen affinity purification
Size: 150ul , Concentration: 450 µg/ml by Nanodrop;	GeneID (NCBI): 10657	Recommended Dilutions: WB 1:1000-1:4000 IP 0.5-4.0 ug for 1.0-3.0 mg of total protein lysate IHC 1:20-1:200 IF 1:50-1:500
Source: Rabbit	Full Name: KH domain containing, RNA binding, signal transduction associated 1	
Isotype: IgG	Calculated MW: 48 kDa	
Immunogen Catalog Number: AG0235	Observed MW: 68 kDa	

Applications

Tested Applications: FC, IF, IHC, IP, WB, ELISA	Positive Controls:
Cited Applications: CoIP, IHC, RIP, WB	WB : HT-29 cells, mouse brain tissue, HeLa cells, NIH/3T3 cells, HEK-293 cells, rat brain tissue
Species Specificity: human, mouse, rat	IP : HeLa cells,
Cited Species: human, mouse	IHC : human breast cancer tissue, IF : mouse brain tissue,

Note-IHC: suggested antigen retrieval with TE buffer pH 9.0; (*) Alternatively, antigen retrieval may be performed with citrate buffer pH 6.0

Background Information

KHDRBS1, also named as SAM68, p62 and p68, belongs to the KHDRBS family. It is recruited and tyrosine phosphorylated by several receptor systems, for example the T-cell, leptin and INS receptors. Once phosphorylated, KHDRBS1 functions as an adapter protein in signal transduction cascades by binding to SH2 and SH3 domain-containing proteins. It represses CBP-dependent transcriptional activation apparently by competing with other nuclear factors for binding to CBP. KHDRBS1 also acts as a putative regulator of mRNA stability and/or translation rates and mediates mRNA nuclear export. KHDRBS1 has three isoforms with calculated MW of 44-48kd. For isoform with a calculated MW of 48.2 kD, it migrated as a 68kD protein on SDS-PAGE gels[PMID: 10564820]. This is a rabbit polyclonal antibody raised against residues near the N terminus of human KHDRBS1.

Notable Publications

Author	Pubmed ID	Journal	Application
Xin Yu	36247240	Am J Transl Res	IHC, WB
Song Zhu	33537092	Theranostics	IHC
Cira Dansokho	26912648	Brain	IHC

Storage

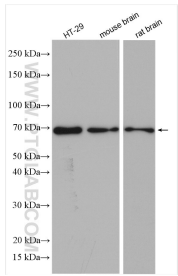
Storage:
Store at -20°C. Stable for one year after shipment.
Storage Buffer:
PBS with 0.02% sodium azide and 50% glycerol pH 7.3.
Aliquoting is unnecessary for -20°C storage

*** 20ul sizes contain 0.1% BSA

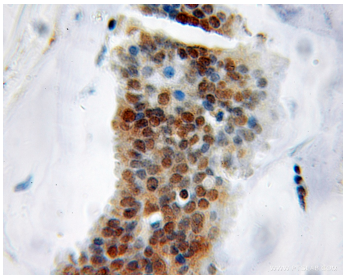
For technical support and original validation data for this product please contact:
T: 1 (888) 4PTGLAB (1-888-478-4522) (toll free in USA), or 1(312) 455-8498 (outside USA)
E: proteintech@ptglab.com
W: ptglab.com

This product is exclusively available under Proteintech Group brand and is not available to purchase from any other manufacturer.

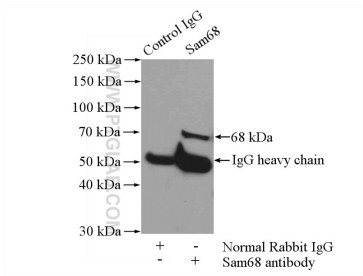
Selected Validation Data



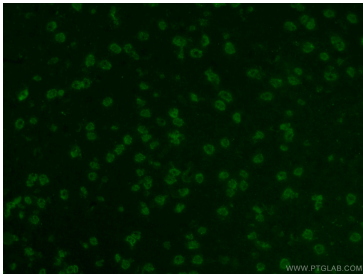
Various lysates were subjected to SDS PAGE followed by western blot with 10222-1-AP (Sam68 antibody) at dilution of 1:2000 incubated at room temperature for 1.5 hours.



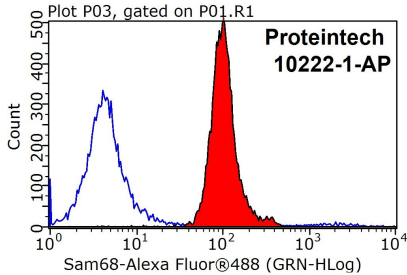
Immunohistochemical analysis of paraffin-embedded human breast cancer using 10222-1-AP (KHDRBS1 antibody) at dilution of 1:50 (under 10x lens).



IP Result of anti-Sam68 (IP:10222-1-AP, 4ug; Detection:10222-1-AP 1:1000) with HeLa cells lysate 1200ug.



Immunofluorescent analysis of (4% PFA) fixed mouse brain tissue using 10222-1-AP (Sam68 antibody) at dilution of 1:50 and Alexa Fluor 488-conjugated AffiniPure Goat Anti-Rabbit IgG(H+L).



1X10⁶ MCF-7 cells were stained with 0.2ug Sam68 antibody (10222-1-AP, red) and control antibody (blue). Fixed with 90% MeOH blocked with 3% BSA (30 min). Alexa Fluor 488-conjugated AffiniPure Goat Anti-Rabbit IgG(H+L) with dilution 1:1000.