

For Research Use Only

Sam68 Polyclonal antibody, PBS Only

Catalog Number: 10222-1-PBS

Featured Product



Basic Information

Catalog Number:

10222-1-PBS

Size:

100ug, Concentration: 1 mg/ml by Nanodrop;

Source:

Rabbit

Isotype:

IgG

Immunogen Catalog Number:

AG0235

GenBank Accession Number:

BC000717

GeneID (NCBI):

10657

UNIPROT ID:

Q07666

Full Name:

KH domain containing, RNA binding, signal transduction associated 1

Calculated MW:

48 kDa

Observed MW:

68 kDa

Purification Method:

Antigen affinity purification

Applications

Tested Applications:

WB, IHC, IF/ICC, IP, Indirect ELISA

Species Specificity:

human, mouse, rat

Background Information

KHDRBS1, also named as SAM68, p62 and p68, belongs to the KHDRBS family. It is recruited and tyrosine phosphorylated by several receptor systems, for example the T-cell, leptin and INS receptors. Once phosphorylated, KHDRBS1 functions as an adapter protein in signal transduction cascades by binding to SH2 and SH3 domain-containing proteins. It represses CBP-dependent transcriptional activation apparently by competing with other nuclear factors for binding to CBP. KHDRBS1 also acts as a putative regulator of mRNA stability and/or translation rates and mediates mRNA nuclear export. KHDRBS1 has three isoforms with calculated MW of 44-48 kDa. For isoform with a calculated MW of 48.2 kDa, it migrated as a 68 kDa protein on SDS-PAGE gels [PMID: 10564820]. This is a rabbit polyclonal antibody raised against residues near the N terminus of human Sam68.

Storage

Storage:

Store at -80°C.

Storage Buffer:

PBS only, pH7.3

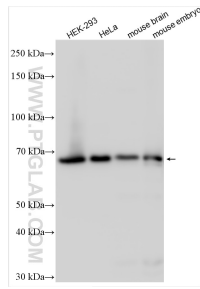
For technical support and original validation data for this product please contact:

T: 1 (888) 4PTGLAB (1-888-478-4522) (toll free in USA), or 1(312) 455-8498 (outside USA)

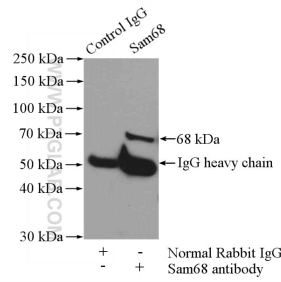
E: proteintech@ptglab.com
W: ptglab.com

This product is exclusively available under Proteintech Group brand and is not available to purchase from any other manufacturer.

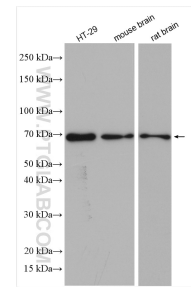
Selected Validation Data



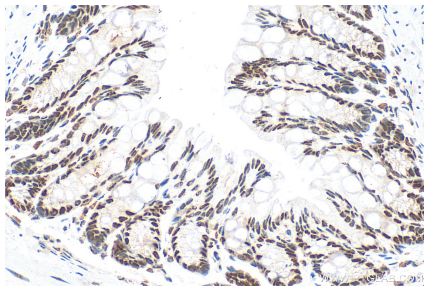
Various lysates were subjected to SDS PAGE followed by western blot with 10222-1-AP (Sam68 antibody) at dilution of 1:5000 incubated at room temperature for 1.5 hours. This data was developed using the same antibody clone with 10222-1-PBS in a different storage buffer formulation.



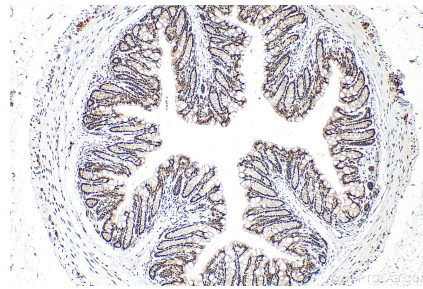
IP result of anti-Sam68 (IP:10222-1-AP, 4ug; Detection:10222-1-AP 1:1000) with HeLa cells lysate 1200ug. This data was developed using the same antibody clone with 10222-1-PBS in a different storage buffer formulation.



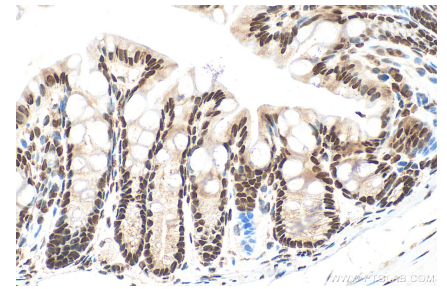
Various lysates were subjected to SDS PAGE followed by western blot with 10222-1-AP (Sam68 antibody) at dilution of 1:2000 incubated at room temperature for 1.5 hours. This data was developed using the same antibody clone with 10222-1-PBS in a different storage buffer formulation.



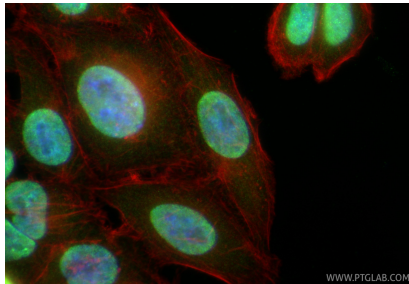
Immunohistochemical analysis of paraffin-embedded mouse colon tissue slide using 10222-1-AP (Sam68 antibody) at dilution of 1:1000 (under 40x lens). Heat mediated antigen retrieval with Tris-EDTA buffer (pH 9.0). This data was developed using the same antibody clone with 10222-1-PBS in a different storage buffer formulation.



Immunohistochemical analysis of paraffin-embedded mouse colon tissue slide using 10222-1-AP (Sam68 antibody) at dilution of 1:1000 (under 10x lens). Heat mediated antigen retrieval with Tris-EDTA buffer (pH 9.0). This data was developed using the same antibody clone with 10222-1-PBS in a different storage buffer formulation.



Immunohistochemical analysis of paraffin-embedded mouse colon tissue slide using 10222-1-AP (Sam68 antibody) at dilution of 1:1000 (under 40x lens). Heat mediated antigen retrieval with Tris-EDTA buffer (pH 9.0). This data was developed using the same antibody clone with 10222-1-PBS in a different storage buffer formulation.



Immunofluorescent analysis of (4% PFA) fixed HepG2 cells using Sam68 antibody (10222-1-AP) at dilution of 1:200 and CoraLite®488-Conjugated Goat Anti-Rabbit IgG(H+L) (SA00013-2), CL594-phalloidin (red). This data was developed using the same antibody clone with 10222-1-PBS in a different storage buffer formulation.