

For Research Use Only

ABCF2 Polyclonal antibody

Catalog Number: 10226-1-AP **1 Publications**



Basic Information

Catalog Number: 10226-1-AP	GenBank Accession Number: BC001661	Purification Method: Antigen affinity purification
Size: 150ul , Concentration: 400 µg/ml by Nanodrop and 173 µg/ml by Bradford method using BSA as the standard;	GeneID (NCBI): 10061	Recommended Dilutions: WB 1:500-1:3000 IP 0.5-4.0 ug for IP and 1:200-1:1000 for WB
Source: Rabbit	Full Name: ATP-binding cassette, sub-family F (GCN20), member 2	IHC 1:20-1:200 IF 1:50-1:500
Isotype: IgG	Calculated MW: 71 kDa	
Immunogen Catalog Number: AG0310	Observed MW: 71 kDa	

Applications

Tested Applications: IF, IHC, IP, WB, ELISA	Positive Controls: WB : NIH/3T3 cells, HEK-293 cells
Cited Applications: WB	IP : HeLa cells,
Species Specificity: human, mouse	IHC : human colon cancer tissue,
Cited Species: human	IF : HeLa cells,

Note-IHC: suggested antigen retrieval with TE buffer pH 9.0; (*) Alternatively, antigen retrieval may be performed with citrate buffer pH 6.0

Background Information

ABCF2 (ABC28, M-ABC1, HUSSY-18, EST133090, DKFZp586K1823) is a member of the superfamily of ATP-binding cassette (ABC) transporters. ABC proteins are composed of transmembrane domains (TMDs), and nucleotide binding domains (NBDs, or ATP-binding cassettes, ABSs). Based on their sequence similarity scores, the members of the human ABC protein family can be grouped into eight subfamilies, including the MDR/TAP, the ALD, the MRP/CFTR, the ABC1, the White, the RNaseL inhibitor, the ANSA, and the GCN20 subfamilies. ABCF2 is a member of the GCN20 subfamily. ABC proteins transport various molecules across extra- and intracellular membranes.

Notable Publications

Author	Pubmed ID	Journal	Application
Erika C Urdaneta	30824702	Nat Commun	WB

Storage

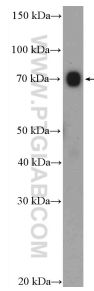
Storage:
Store at -20°C. Stable for one year after shipment.
Storage Buffer:
PBS with 0.02% sodium azide and 50% glycerol pH 7.3.
Aliquoting is unnecessary for -20°C storage

*** 20ul sizes contain 0.1% BSA

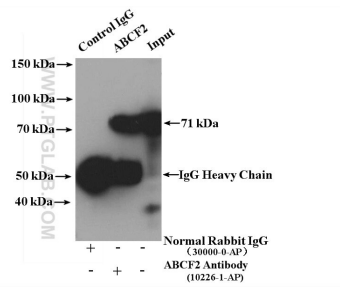
For technical support and original validation data for this product please contact:
T: 1 (888) 4PTGLAB (1-888-478-4522) (toll free in USA), or 1(312) 455-8498 (outside USA)
E: proteintech@ptglab.com
W: ptglab.com

This product is exclusively available under Proteintech Group brand and is not available to purchase from any other manufacturer.

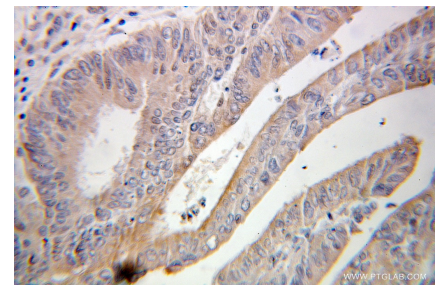
Selected Validation Data



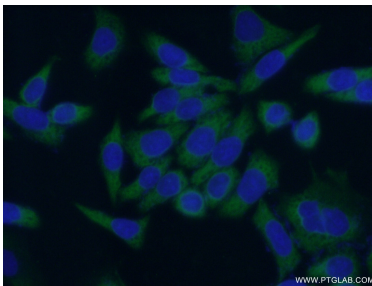
NIH/3T3 cells were subjected to SDS PAGE followed by western blot with 10226-1-AP (ABCF2 Antibody) at dilution of 1:1500 incubated at room temperature for 1.5 hours.



IP result of anti-ABCF2 (IP:10226-1-AP, 4ug; Detection:10226-1-AP 1:300) with HeLa cells lysate 3000 ug.



Immunohistochemical analysis of paraffin-embedded human colon cancer using 10226-1-AP (ABCF2 antibody) at dilution of 1:100 (under 25x lens).



Immunofluorescent analysis of (-20°C Ethanol) fixed HeLa cells using 10226-1-AP (ABCF2 antibody) at dilution of 1:50 and Alexa Fluor 488-conjugated AffiniPure Goat Anti-Rabbit IgG(H+L).