

For Research Use Only

ARL2 Polyclonal antibody

Catalog Number: 10232-1-AP

Featured Product

6 Publications



Basic Information

Catalog Number: 10232-1-AP	GenBank Accession Number: BC002530	Purification Method: Antigen affinity purification
Size: 150ul , Concentration: 270 µg/ml by Nanodrop and 340 µg/ml by Bradford method using BSA as the standard;	GeneID (NCBI): 402	Recommended Dilutions: WB 1:500-1:2000 IHC 1:20-1:200
Source: Rabbit	Full Name: ADP-ribosylation factor-like 2	
Isotype: IgG	Calculated MW: 21 kDa	
Immunogen Catalog Number: AG0334	Observed MW: 21-25 kDa	

Applications

Tested Applications: IHC, WB, ELISA	Positive Controls: WB : mouse liver tissue, HeLa cells, mouse lung tissue, mouse spleen tissue, Y79 cells IHC : human ovary tumor tissue,
Cited Applications: IF, WB	
Species Specificity: human, mouse, rat	
Cited Species: human, mouse, rat	

Note-IHC: suggested antigen retrieval with TE buffer pH 9.0; (*) Alternatively, antigen retrieval may be performed with citrate buffer pH 6.0

Background Information

The ADP-ribosylation factor (ARF) genes are small GTP-binding proteins of the RAS superfamily. ADP-ribosylation factor-like 2 (ARL2) is a member of a functionally distinct group of ARF-like genes. ARL2 interacts with the tubulin-specific chaperone protein known as cofactor D. ARL2 downregulates the tubulin GAP activity of cofactor C, D, and E, and inhibits the binding of D to native tubulin.

Notable Publications

Author	Pubmed ID	Journal	Application
Chun-Xiang Zhou	32985032	J Cell Biochem	WB,IF
Hemangi Patil	25187515	J Biol Chem	WB
Chun-Xiang Zhou	28324667	Cell Cycle	WB

Storage

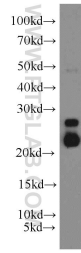
Storage:
Store at -20°C. Stable for one year after shipment.
Storage Buffer:
PBS with 0.02% sodium azide and 50% glycerol pH 7.3.
Aliquoting is unnecessary for -20°C storage

*** 20ul sizes contain 0.1% BSA

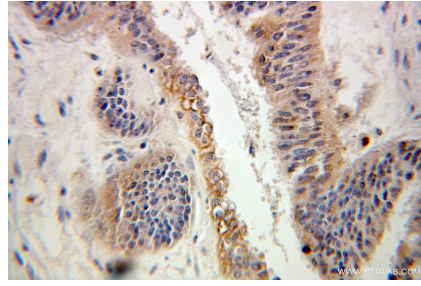
For technical support and original validation data for this product please contact:
T: 1 (888) 4PTGLAB (1-888-478-4522) (toll free in USA), or 1(312) 455-8498 (outside USA)
E: proteintech@ptglab.com
W: ptglab.com

This product is exclusively available under Proteintech Group brand and is not available to purchase from any other manufacturer.

Selected Validation Data



mouse liver tissue were subjected to SDS PAGE followed by western blot with 10232-1-AP (ARL2 antibody) at dilution of 1:500 incubated at room temperature for 1.5 hours.



Immunohistochemical analysis of paraffin-embedded human ovary tumor using 10232-1-AP (ARL2 antibody) at dilution of 1:100 (under 25x lens).