

For Research Use Only

NDE1 Polyclonal antibody

Catalog Number: 10233-1-AP

Featured Product

37 Publications



Basic Information

Catalog Number:

10233-1-AP

Size:

150ul, Concentration: 900 ug/ml by Nanodrop and 453 ug/ml by Bradford method using BSA as the standard;

Source:

Rabbit

Isotype:

IgG

Immunogen Catalog Number:

AG0336

GenBank Accession Number:

BC001421

GeneID (NCBI):

54820

UNIPROT ID:

Q9NXR1

Full Name:

nudE nuclear distribution gene E homolog 1 (A. nidulans)

Calculated MW:

335 aa, 38 kDa

Observed MW:

40 kDa

Purification Method:

Antigen affinity purification

Recommended Dilutions:

WB 1:500-1:3000

IP 0.5-4.0 ug for 1.0-3.0 mg of total protein lysate

IHC 1:20-1:200

IF-P 1:200-1:800

IF/ICC 1:200-1:800

Applications

Tested Applications:

WB, IHC, IF/ICC, IF-P, IP, ELISA

Cited Applications:

WB, IHC, IF, IP, CoIP

Species Specificity:

human, mouse, rat

Cited Species:

human, mouse, rat

Note-IHC: suggested antigen retrieval with TE buffer pH 9.0; (*) Alternatively, antigen retrieval may be performed with citrate buffer pH 6.0

Positive Controls:

WB: A2780 cells, HEK-293 cells, HeLa cells, rat liver tissue, mouse liver tissue, HepG2 cells, mouse brain tissue, rat brain tissue

IP: HEK-293 cells,

IHC: human breast cancer tissue, human colon cancer tissue

IF-P: human breast cancer tissue,

IF/ICC: MCF-7 cells,

Background Information

NDE1 (NUDE /NUDE1) is a LIS1-interacting protein. A signaling pathway containing NDE1, LIS1, and cytoplasmic dynein is conserved for eukaryotic nuclear migration and has profound impact on neuronal migration during development of the central nervous system. LIS1 and dynein have been shown to be involved in mitosis and NDE1 participates in a subset of dynein function in M phase. NDE1 is specifically phosphorylated in M phase in its serine/threonine phosphorylation motifs, probably by Cdc2 and also Erk1 and Erk2. A fraction of NDE1 binds to centrosomes strongly in interphase and is localized to mitotic spindles in early M phase. Phosphorylation of NDE1 also regulates the cell-cycle-dependent distribution, possibly by increasing its dissociation rate at the microtubule-organizing center. This antibody is a rabbit polyclonal antibody raised against a peptide mapping within human NDE1.

Notable Publications

Author	Pubmed ID	Journal	Application
Shauna L Houlihan	25245017	Elife	IF
Syeda Ridita Sharif	27646688	Mol Cells	IF
Shubhankar Nath	27534551	J Immunol	WB

Storage

Storage:

Store at -20°C. Stable for one year after shipment.

Storage Buffer:

PBS with 0.02% sodium azide and 50% glycerol pH 7.3.

Aliquoting is unnecessary for -20°C storage

*** 20ul sizes contain 0.1% BSA

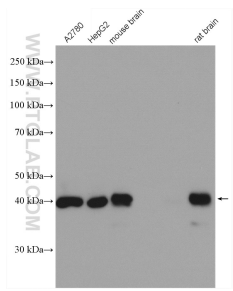
For technical support and original validation data for this product please contact:

T: 1 (888) 4PTGLAB (1-888-478-4522) (toll free in USA), or 1(312) 455-8498 (outside USA)

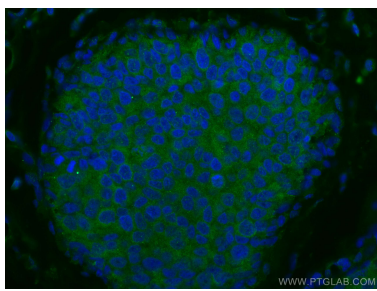
E: proteintech@ptglab.com
W: ptglab.com

This product is exclusively available under Proteintech Group brand and is not available to purchase from any other manufacturer.

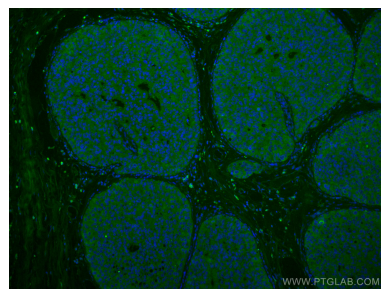
Selected Validation Data



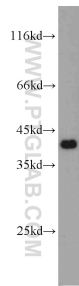
Various cells were subjected to SDS PAGE followed by western blot with 10233-1-AP (NDE1 antibody) at dilution of 1:1500 incubated at room temperature for 1.5 hours.



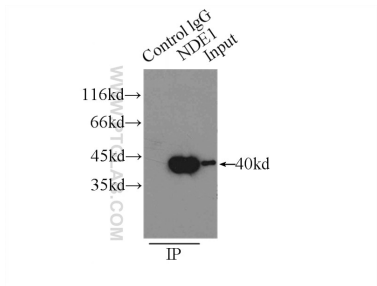
Immunofluorescent analysis of (4% PFA) fixed human breast cancer tissue using NDE1 antibody (10233-1-AP) at dilution of 1:400 and CoraLite®488-Conjugated Goat Anti-Rabbit IgG(H+L).



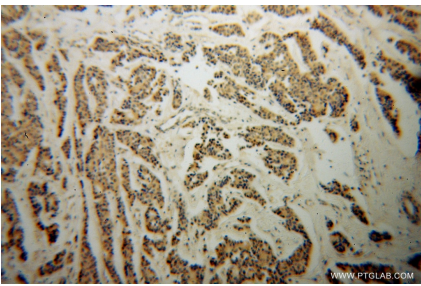
Immunofluorescent analysis of (4% PFA) fixed human breast cancer tissue using NDE1 antibody (10233-1-AP) at dilution of 1:400 and CoraLite®488-Conjugated Goat Anti-Rabbit IgG(H+L).



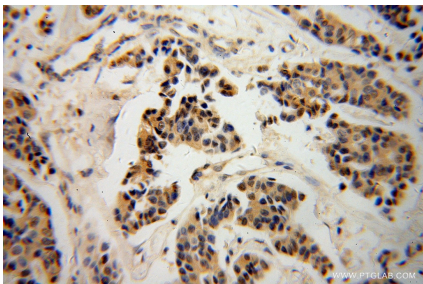
A2780 cells were subjected to SDS PAGE followed by western blot with 10233-1-AP (NDE1 antibody) at dilution of 1:1500 incubated at room temperature for 1.5 hours.



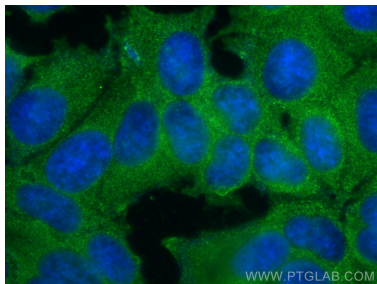
IP result of anti-NDE1 (IP:10233-1-AP, 3ug; Detection:10233-1-AP 1:1500) with HEK-293 cells lysate 4500ug.



Immunohistochemical analysis of paraffin-embedded human breast cancer using 10233-1-AP (NDE1 antibody) at dilution of 1:100 (under 10x lens).



Immunohistochemical analysis of paraffin-embedded human breast cancer using 10233-1-AP (NDE1 antibody) at dilution of 1:100 (under 40x lens).



Immunofluorescent analysis of (-20°C Methanol) fixed MCF-7 cells using NDE1 antibody (10233-1-AP) at dilution of 1:400 and CoraLite®488-Conjugated Goat Anti-Rabbit IgG(H+L) (SA00013-2).