

For Research Use Only

PLEKHA1 Polyclonal antibody

Catalog Number: 10238-1-AP **2 Publications**



Basic Information

| | | |
|--|---|---|
| Catalog Number: 10238-1-AP | GenBank Accession Number: BC001136 | Purification Method: Antigen affinity purification |
| Size: 150ul , Concentration: 400 µg/ml by Nanodrop and 233 µg/ml by Bradford method using BSA as the standard; | GeneID (NCBI): 59338 | Recommended Dilutions: WB 1:500-1:1000 IHC 1:50-1:500 IF 1:50-1:500 |
| Source: Rabbit | Full Name: pleckstrin homology domain containing, family A (phosphoinositide binding specific) member 1 | |
| Isotype: IgG | Calculated MW: 46 kDa | |
| Immunogen Catalog Number: AG0318 | Observed MW: 46 kDa | |

Applications

| | |
|---|---|
| Tested Applications: IF, IHC, WB, ELISA | Positive Controls: |
| Cited Applications: WB | WB : human placenta tissue, Jurkat cells |
| Species Specificity: human | IHC : human colon tissue, human pancreas cancer tissue |
| Cited Species: mouse | IF : HeLa cells, |

Note-IHC: suggested antigen retrieval with TE buffer pH 9.0; (*) Alternatively, antigen retrieval may be performed with citrate buffer pH 6.0

Background Information

Pleckstrin homology (PH) domain is commonly found in eukaryotic signaling proteins and possesses multiple functions including the abilities to bind inositol phosphates and various proteins. The tandem PH domain containing protein-1 (TAPP1) or PH domain containing-family A (phosphoinositide binding specific) member 1 (PLEKHA1), interacts strongly and specifically with phosphatidylinositol 3,4-trisphosphate [PtdIns(3,4)P(2)], which is one of the immediate breakdown products of PtdIns(3,4,5) P (3) and functions as a signalling molecule in insulin- and growth-factor-stimulated pathways. TAPP1 is also associated with the protein- tyrosine-phosphatase-like protein-1 (PTPL1 also known as FAP-1) and maintains PTPL1 in cytoplasm. By binding to PtdIns(3,4) P (2) and PTPL1, TAPP1 may regulate the membrane localization of PTPL1."

Notable Publications

| Author | Pubmed ID | Journal | Application |
|--------------------|-----------|-------------|-------------|
| Michelle E LeBlanc | 28330905 | J Exp Med | WB |
| Xin Rong | 30904565 | Exp Eye Res | |

Storage

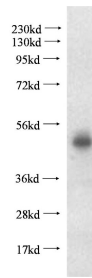
Storage:
Store at -20°C. Stable for one year after shipment.
Storage Buffer:
PBS with 0.02% sodium azide and 50% glycerol pH 7.3.
Aliquoting is unnecessary for -20°C storage

*** 20ul sizes contain 0.1% BSA

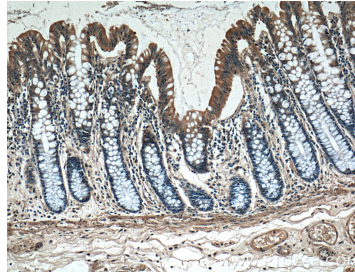
For technical support and original validation data for this product please contact:
T: 1 (888) 4PTGLAB (1-888-478-4522) (toll free in USA), or 1(312) 455-8498 (outside USA)
E: proteintech@ptglab.com
W: ptglab.com

This product is exclusively available under Proteintech Group brand and is not available to purchase from any other manufacturer.

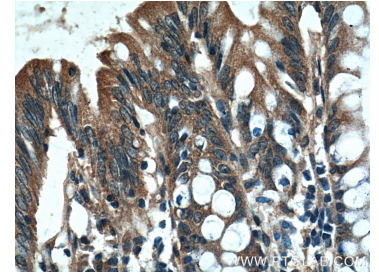
Selected Validation Data



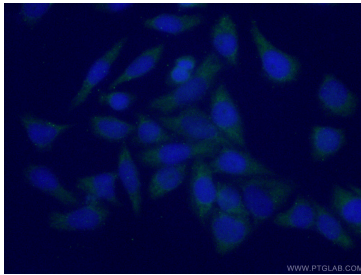
human placenta tissue were subjected to SDS PAGE followed by western blot with 10238-1-AP (PLEKHA1 antibody) at dilution of 1:500 incubated at room temperature for 1.5 hours.



Immunohistochemical analysis of paraffin-embedded human colon tissue slide using 10238-1-AP (PLEKHA1 Antibody) at dilution of 1:200 (under 10x lens).



Immunohistochemical analysis of paraffin-embedded human colon tissue slide using 10238-1-AP (PLEKHA1 Antibody) at dilution of 1:200 (under 40x lens).



Immunofluorescent analysis of (-20°C Ethanol) fixed HeLa cells using 10238-1-AP (PLEKHA1 antibody) at dilution of 1:50 and Alexa Fluor 488-conjugated AffiniPure Goat Anti-Rabbit IgG(H+L).