

For Research Use Only

GDI1 Polyclonal antibody

Catalog Number: 10249-1-AP **6 Publications**



Basic Information

Catalog Number: 10249-1-AP	GenBank Accession Number: BC000317	Purification Method: Antigen affinity purification
Size: 150ul , Concentration: 180 µg/ml by Nanodrop and 180 µg/ml by Bradford method using BSA as the standard;	GeneID (NCBI): 2664	Recommended Dilutions: WB 1:500-1:2000 IP 0.5-4.0 ug for IP and 1:500-1:1000 for WB IHC 1:50-1:500
Source: Rabbit	Full Name: GDP dissociation inhibitor 1	
Isotype: IgG	Calculated MW: 51 kDa	
Immunogen Catalog Number: AG0288	Observed MW: 55 kDa	

Applications

Tested Applications: IHC, IP, WB, ELISA	Positive Controls:
Cited Applications: ELISA, IF, WB	WB : mouse brain tissue, human brain tissue, rat brain tissue
Species Specificity: human, mouse, rat	IP : mouse brain tissue,
Cited Species: human, mouse	IHC : human breast cancer tissue,
Note-IHC: suggested antigen retrieval with TE buffer pH 9.0; (*) Alternatively, antigen retrieval may be performed with citrate buffer pH 6.0	

Background Information

GDP dissociation inhibitors (GDIs) are proteins that regulate the GDP-GTP exchange reaction of members of the rab family. GDIs can bind and release GDP-bound Rab proteins from membranes. Two GDI proteins towards different Rab proteins have been identified. GDI1 interacts with almost all of the Rab proteins, while GDI2 interacts with Rab11 but not Rab3A. GDI1 is expressed primarily in neural and sensory tissues and also in secretory cells, displaying a diffuse, cytoplasmic distribution in cells. It runs as a 55kda protein in SDS-PAGE. (PMID: 7929030, PMID: 19570034) This antibody can bind both GDIs for the close sequences.

Notable Publications

Author	Pubmed ID	Journal	Application
Xueyi Li	19699304	Neurobiol Dis	WB
Masato Mashimo	35887176	Int J Mol Sci	IF
Ye Chen	34994492	EMBO Rep	IF

Storage

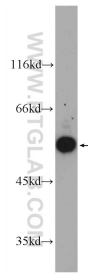
Storage:
Store at -20°C. Stable for one year after shipment.
Storage Buffer:
PBS with 0.02% sodium azide and 50% glycerol pH 7.3.
Aliquoting is unnecessary for -20°C storage

*** 20ul sizes contain 0.1% BSA

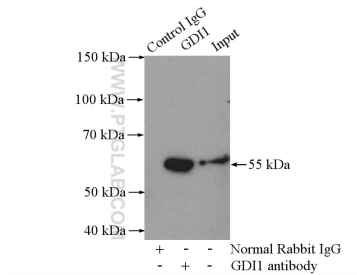
For technical support and original validation data for this product please contact:
T: 1 (888) 4PTGLAB (1-888-478-4522) (toll free in USA), or 1(312) 455-8498 (outside USA)
E: proteintech@ptglab.com
W: ptglab.com

This product is exclusively available under Proteintech Group brand and is not available to purchase from any other manufacturer.

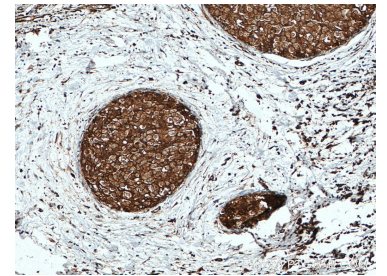
Selected Validation Data



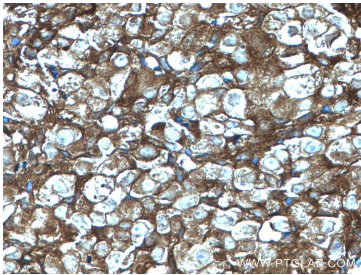
mouse brain tissue were subjected to SDS PAGE followed by western blot with 10249-1-AP (GDI1 Antibody) at dilution of 1:1000 incubated at room temperature for 1.5 hours.



IP Result of anti-GDI1 (IP:10249-1-AP, 4ug; Detection:10249-1-AP 1:800) with mouse brain tissue lysate 4000ug.



Immunohistochemical analysis of paraffin-embedded human breast cancer tissue slide using 10249-1-AP (GDI1 antibody) at dilution of 1:200 (under 10x lens. Heat mediated antigen retrieval with Tris-EDTA buffer (pH 9.0).



Immunohistochemical analysis of paraffin-embedded human breast cancer tissue slide using 10249-1-AP (GDI1 antibody) at dilution of 1:200 (under 40x lens. Heat mediated antigen retrieval with Tris-EDTA buffer (pH 9.0).