

For Research Use Only

TIP30 Polyclonal antibody, PBS Only

Catalog Number: 10251-1-PBS



Basic Information

| | | |
|--|---|--|
| Catalog Number: 10251-1-PBS | GenBank Accession Number: BC002439 | Purification Method: Antigen affinity purification |
| Size: 100ug , Concentration: 1 mg/ml by Nanodrop; | GeneID (NCBI): 10553 | |
| Source: Rabbit | UNIPROT ID: Q9BUP3 | |
| Isotype: IgG | Full Name: HIV-1 Tat interactive protein 2, 30kDa | |
| Immunogen Catalog Number: AG0353 | Calculated MW: 27 kDa | |
| | Observed MW: 30 kDa | |

Applications

Tested Applications:
WB, IHC, Indirect ELISA

Species Specificity:
human

Background Information

TIP30/CC3 was first identified and characterized as a "candidate" tumor-suppressor gene in 1997. TIP30 is involved in the control of cell apoptosis, growth, metastasis, angiogenesis, DNA repair, and tumor cell metabolism.

Storage

Storage:
Store at -80°C.

Storage Buffer:
PBS only, pH7.3

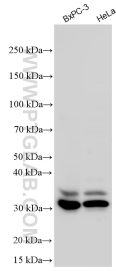
For technical support and original validation data for this product please contact:

T: 1 (888) 4PTGLAB (1-888-478-4522) (toll free
in USA), or 1(312) 455-8498 (outside USA)

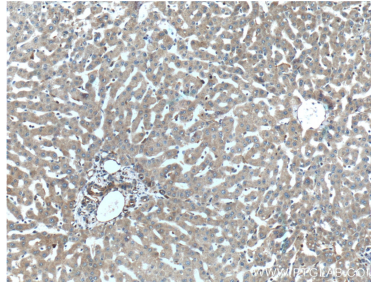
E: proteintech@ptglab.com
W: ptglab.com

This product is exclusively available under Proteintech Group brand and is not available to purchase from any other manufacturer.

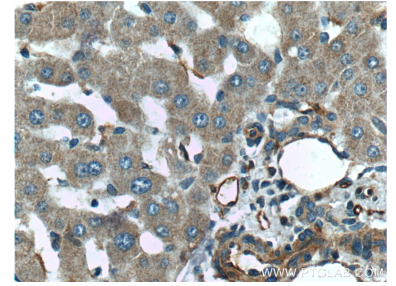
Selected Validation Data



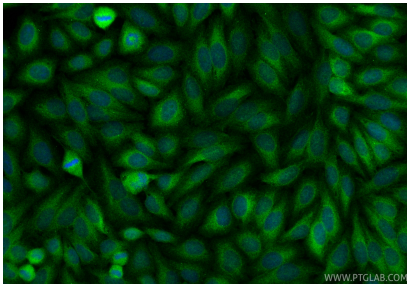
Various lysates were subjected to SDS PAGE followed by western blot with 10251-1-AP (TIP30 antibody) at dilution of 1:4000 incubated at room temperature for 1.5 hours. This data was developed using the same antibody clone with 10251-1-PBS in a different storage buffer formulation.



Immunohistochemical analysis of paraffin-embedded human liver tissue slide using 10251-1-AP (TIP30 Antibody) at dilution of 1:200 (under 10x lens). This data was developed using the same antibody clone with 10251-1-PBS in a different storage buffer formulation.



Immunohistochemical analysis of paraffin-embedded human liver tissue slide using 10251-1-AP (TIP30 Antibody) at dilution of 1:200 (under 40x lens). This data was developed using the same antibody clone with 10251-1-PBS in a different storage buffer formulation.



Immunofluorescent analysis of (4% PFA) fixed HepG2 cells using TIP30 antibody (10251-1-AP) at dilution of 1:200 and Coralite®488-Conjugated Goat Anti-Rabbit IgG(H+L) (SA00013-2). This data was developed using the same antibody clone with 10251-1-PBS in a different storage buffer formulation.