

For Research Use Only

# GRB2 Polyclonal antibody

Catalog Number: 10254-2-AP

Featured Product

17 Publications



## Basic Information

### Catalog Number:

10254-2-AP

### Size:

150ul, Concentration: 600 ug/ml by Nanodrop and 333 ug/ml by Bradford method using BSA as the standard;

### Source:

Rabbit

### Isotype:

IgG

### Immunogen Catalog Number:

AG0395

### GenBank Accession Number:

BC000631

### GeneID (NCBI):

2885

### UNIPROT ID:

P62993

### Full Name:

growth factor receptor-bound protein 2

### Calculated MW:

25 kDa

### Observed MW:

25-28 kDa

### Purification Method:

Antigen affinity purification

### Recommended Dilutions:

WB 1:500-1:2000

IHC 1:50-1:500

IF/ICC 1:10-1:100

## Applications

### Tested Applications:

WB, IHC, IF/ICC, ELISA

### Cited Applications:

WB, IHC, IF

### Species Specificity:

human, mouse, rat

### Cited Species:

human, mouse

**Note-IHC: suggested antigen retrieval with TE buffer pH 9.0; (\*) Alternatively, antigen retrieval may be performed with citrate buffer pH 6.0**

### Positive Controls:

**WB** : HEK-293 cells, A431 cells, rat brain tissue, rat spleen tissue

**IHC** : human pancreas cancer tissue,

**IF/ICC** : HEK-293 cells,

## Background Information

GRB2 (growth factor receptor-bound protein 2) binds the epidermal growth factor receptor and contains one SH2 domain and two SH3 domains. Two alternatively spliced transcript variants encoding different isoforms have been found for this gene. N-SH3 domain of Grb2 was involved in the protein vesicular localization including amyloid-beta protein precursor. Involvement of GRB2 in Ras-signaling pathway has been reported, recent finding show that GRB2 may also play a complex role in T and B-cell antigen receptor signaling.

## Notable Publications

Author	Pubmed ID	Journal	Application
Libo Hou	28889064	Mol Immunol	WB
Jie Lv	31634528	Cancer Lett	IHC
Jin-Feng Zhu	30479571	Cancer Cell Int	WB

## Storage

### Storage:

Store at -20°C. Stable for one year after shipment.

### Storage Buffer:

PBS with 0.02% sodium azide and 50% glycerol pH 7.3.

Aliquoting is unnecessary for -20°C storage

\*\*\* 20ul sizes contain 0.1% BSA

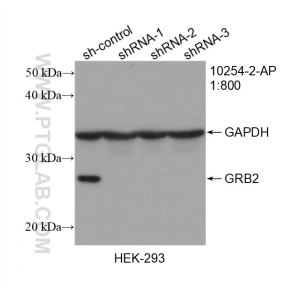
For technical support and original validation data for this product please contact:

T: 1 (888) 4PTGLAB (1-888-478-4522) (toll free in USA), or 1(312) 455-8498 (outside USA)

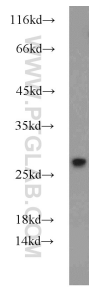
E: proteintech@ptglab.com  
W: ptglab.com

This product is exclusively available under Proteintech Group brand and is not available to purchase from any other manufacturer.

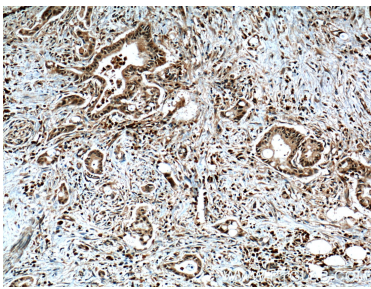
Selected Validation Data



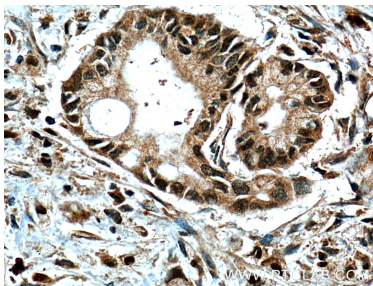
WB result of GRB2 antibody (10254-2-AP; 1:800; incubated at room temperature for 1.5 hours) with sh-Control and sh-GRB2 transfected HEK-293 cells.



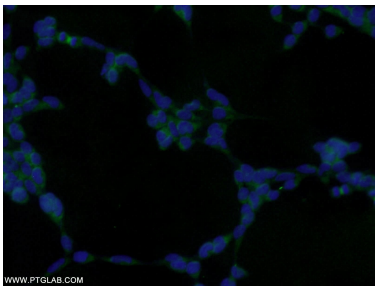
HEK-293 cells were subjected to SDS PAGE followed by western blot with 10254-2-AP (GRB2 antibody) at dilution of 1:1000 incubated at room temperature for 1.5 hours.



Immunohistochemical analysis of paraffin-embedded human pancreas cancer tissue slide using 10254-2-AP (GRB2 Antibody) at dilution of 1:200 (under 10x lens). Heat mediated antigen retrieval with Tris-EDTA buffer (pH 9.0).



Immunohistochemical analysis of paraffin-embedded human pancreas cancer tissue slide using 10254-2-AP (GRB2 Antibody) at dilution of 1:200 (under 40x lens). Heat mediated antigen retrieval with Tris-EDTA buffer (pH 9.0).



Immunofluorescent analysis of HEK-293 cells using 10254-2-AP (GRB2 antibody) at dilution of 1:25 and Alexa Fluor 488-conjugated Goat Anti-Rabbit IgG(H+L).