

For Research Use Only

COPS6 Polyclonal antibody

Catalog Number: 10256-1-AP

Featured Product

1 Publications



Basic Information

Catalog Number:

10256-1-AP

Size:

150ul, Concentration: 600 ug/ml by Nanodrop;

Source:

Rabbit

Isotype:

IgG

Immunogen Catalog Number:

AG0331

GenBank Accession Number:

BC002520

GeneID (NCBI):

10980

UNIPROT ID:

Q7L5N1

Full Name:

COP9 constitutive photomorphogenic homolog subunit 6 (Arabidopsis)

Calculated MW:

327 aa, 36 kDa

Observed MW:

34 kDa

Purification Method:

Antigen affinity purification

Recommended Dilutions:

WB 1:500-1:3000

IHC 1:50-1:500

IF/ICC 1:200-1:800

Applications

Tested Applications:

WB, IHC, IF/ICC, ELISA

Cited Applications:

WB

Species Specificity:

human, mouse, rat, pig, monkey

Cited Species:

human

Note-IHC: suggested antigen retrieval with TE buffer pH 9.0; (*) Alternatively, antigen retrieval may be performed with citrate buffer pH 6.0

Positive Controls:

WB: mouse colon tissue, 3T3-L1 cells, pig lymph node tissue

IHC: human colon tissue,

IF/ICC: HeLa cells, COLO 320 cells

Background Information

The COPS6 protein, also named mov34, is a 34 kDa subunit of COP9 signalosome, a highly conserved eight-subunit protein complex that functions as an important regulator in multiple signaling pathways (PMID: 38308184). This protein belongs to translation initiation factor 3 (eIF3) superfamily. It is involved in the regulation of cell cycle and acts as the regulatory subunit of the 26S proteasome.

Notable Publications

Author	Pubmed ID	Journal	Application
Zun Mao	31223289	Int J Biol Sci	WB

Storage

Storage:

Store at -20°C. Stable for one year after shipment.

Storage Buffer:

PBS with 0.02% sodium azide and 50% glycerol pH 7.3.

Aliquoting is unnecessary for -20°C storage

*** 20ul sizes contain 0.1% BSA

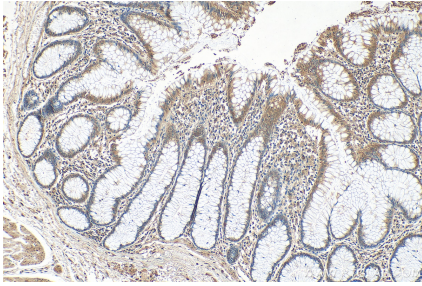
For technical support and original validation data for this product please contact:

T: 1 (888) 4PTGLAB (1-888-478-4522) (toll free in USA), or 1(312) 455-8498 (outside USA)

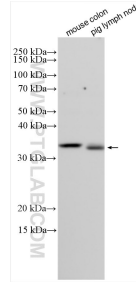
E: proteintech@ptglab.com
W: ptglab.com

This product is exclusively available under Proteintech Group brand and is not available to purchase from any other manufacturer.

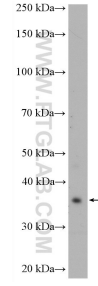
Selected Validation Data



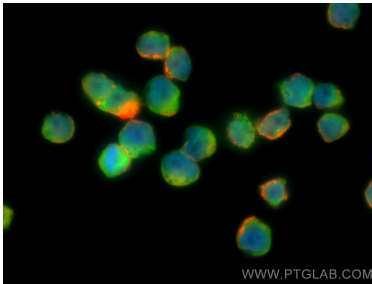
Immunohistochemical analysis of paraffin-embedded human colon tissue slide using 10256-1-AP (COPS6 antibody) at dilution of 1:200 (under 10x lens). Heat mediated antigen retrieval with Tris-EDTA buffer (pH 9.0).



Various lysates were subjected to SDS PAGE followed by western blot with 10256-1-AP (COPS6 antibody) at dilution of 1:1500 incubated at room temperature for 1.5 hours.



3T3-L1 cells were subjected to SDS PAGE followed by western blot with 10256-1-AP (COPS6 antibody) at dilution of 1:600 incubated at room temperature for 1.5 hours.



Immunofluorescent analysis of (4% PFA) fixed COLO 320 cells using COPS6 antibody (10256-1-AP) at dilution of 1:400 and Multi-rAb CoraLite @ Plus 488-Goat Anti-Rabbit Recombinant Secondary Antibody (H+L) (RGAR002), CL594-Phalloidin (red).



Immunofluorescent analysis of (4% PFA) fixed HeLa cells using COPS6 antibody (10256-1-AP) at dilution of 1:400 and Multi-rAb CoraLite @ Plus 488-Goat Anti-Rabbit Recombinant Secondary Antibody (H+L) (RGAR002), CL594-Phalloidin (red).