

For Research Use Only

STAT6 70kDa Polyclonal antibody

Catalog Number: 10257-1-AP

2 Publications



Basic Information

| | | |
|--|--|--|
| Catalog Number: 10257-1-AP | GenBank Accession Number: BC005823 | Purification Method: Antigen affinity purification |
| Size: 150ul , Concentration: 370 µg/ml by Nanodrop and 367 µg/ml by Bradford method using BSA as the standard; | GeneID (NCBI): 6778 | Recommended Dilutions: WB 1:500-1:2000 IHC 1:20-1:200 |
| Source: Rabbit | Full Name: signal transducer and activator of transcription 6, interleukin-4 induced | |
| Isotype: IgG | Calculated MW: 100 kDa | |
| Immunogen Catalog Number: AG0410 | Observed MW: 75-80 kDa | |

Applications

| | |
|--|-----------------------------------|
| Tested Applications: IHC, WB, ELISA | Positive Controls: |
| Cited Applications: WB | WB : HeLa cells, |
| Species Specificity: human, mouse, rat | IHC : human spleen tissue, |
| Cited Species: mouse, rat | |

Note-IHC: suggested antigen retrieval with TE buffer pH 9.0; (*) Alternatively, antigen retrieval may be performed with citrate buffer pH 6.0

Background Information

STAT6, also named as Signal transducer and activator of transcription 6, is a 847 amino acid protein, which belongs to the transcription factor STAT family. STAT6 forms a homodimer or a heterodimer with a related family member. STAT6 translocates into the nucleus in response to phosphorylation. STAT6 is Involved in IL4/interleukin-4- and IL3/interleukin-3-mediated signaling. This poly-antibody only recognizes 70 kDa isoform of STAT6.

Notable Publications

| Author | Pubmed ID | Journal | Application |
|-------------|-----------|-----------------|-------------|
| Ying Xu | 34425061 | Pharm Biol | WB |
| Yiwei Zhang | 34456714 | Front Pharmacol | WB |

Storage

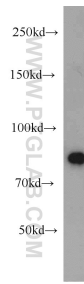
Storage:
Store at -20°C. Stable for one year after shipment.
Storage Buffer:
PBS with 0.02% sodium azide and 50% glycerol pH 7.3.
Aliquoting is unnecessary for -20°C storage

*** 20ul sizes contain 0.1% BSA

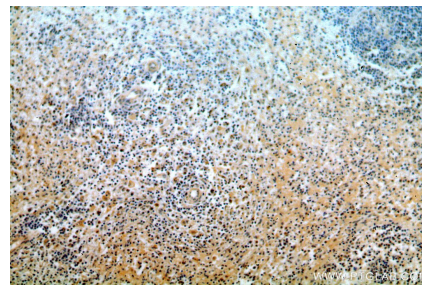
For technical support and original validation data for this product please contact:
T: 1 (888) 4PTGLAB (1-888-478-4522) (toll free in USA), or 1(312) 455-8498 (outside USA)
E: proteintech@ptglab.com
W: ptglab.com

This product is exclusively available under Proteintech Group brand and is not available to purchase from any other manufacturer.

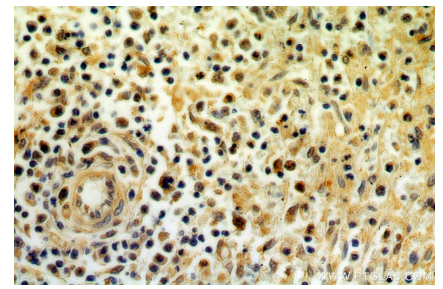
Selected Validation Data



HeLa cells were subjected to SDS PAGE followed by western blot with 10257-1-AP (STAT6 antibody) at dilution of 1:1000 incubated at room temperature for 1.5 hours.



Immunohistochemical analysis of paraffin-embedded human spleen using 10257-1-AP (STAT6 antibody) at dilution of 1:50 (under 10x lens).



Immunohistochemical analysis of paraffin-embedded human spleen using 10257-1-AP (STAT6 antibody) at dilution of 1:50 (under 40x lens).