

For Research Use Only

LSM1 Polyclonal antibody

Catalog Number: 10259-1-AP



Basic Information

| | | |
|--|---|--|
| Catalog Number: 10259-1-AP | GenBank Accession Number: BC001767 | Purification Method: Antigen affinity purification |
| Size: 150ul , Concentration: 293 µg/ml by Bradford method using BSA as the standard; | GeneID (NCBI): 27257 | Recommended Dilutions: WB 1:500-1:1000 IP 0.5-4.0 ug for IP and 1:200-1:1000 for WB |
| Source: Rabbit | Full Name: LSM1 homolog, U6 small nuclear RNA associated (<i>S. cerevisiae</i>) | IHC 1:20-1:200 |
| Isotype: IgG | Calculated MW: 15 kDa | |
| Immunogen Catalog Number: AG0232 | Observed MW: 18-20 kDa | |

Applications

Tested Applications:

IHC, IP, WB, ELISA

Species Specificity:

human, mouse, rat

Note-IHC: suggested antigen retrieval with TE buffer pH 9.0; (*) Alternatively, antigen retrieval may be performed with citrate buffer pH 6.0

Positive Controls:

WB : HeLa cells, mouse kidney tissue

IP : HeLa cells,

IHC : human prostate cancer tissue,

Background Information

Lsm1 is a component of the Lsm1-7 complex involved in cytoplasmic mRNA degradation. Lsm1 is a key subunit that determines the RNA-binding properties of this complex. The normal RNA-binding activity of this complex is crucial for mRNA decay and 3'-end protection in vivo and requires the intact Sm-domain of Lsm1. LSM1 localizes to cytoplasmic processing bodies (P bodies) involved in mRNA storage, processing, regulation, and degradation and is required for P-body formation. LSM1 proteins facilitate the formation of U4/U6 RNA duplexes in vitro and may play a role in U4/U6 snRNP formation.

Storage

Storage:

Store at -20°C. Stable for one year after shipment.

Storage Buffer:

PBS with 0.02% sodium azide and 50% glycerol pH 7.3.

Aliquoting is unnecessary for -20°C storage

*** 20ul sizes contain 0.1% BSA

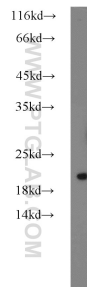
For technical support and original validation data for this product please contact:

T: 1 (888) 4PTGLAB (1-888-478-4522) (toll free in USA), or 1(312) 455-8498 (outside USA)

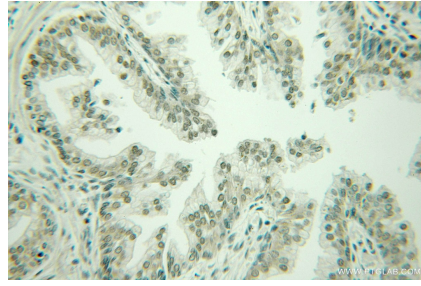
E: proteintech@ptglab.com
W: ptglab.com

This product is exclusively available under Proteintech Group brand and is not available to purchase from any other manufacturer.

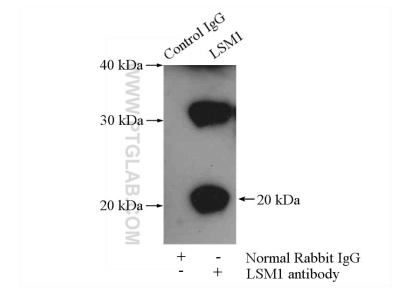
Selected Validation Data



HeLa cells were subjected to SDS PAGE followed by western blot with 10259-1-AP (LSM1 antibody) at dilution of 1:600 incubated at room temperature for 1.5 hours.



Immunohistochemical analysis of paraffin-embedded human prostate cancer using 10259-1-AP (LSM1 antibody) at dilution of 1:100 (under 10x lens).



IP Result of anti-LSM1 (IP:10259-1-AP, 4ug; Detection:10259-1-AP 1:300) with HeLa cells lysate 2000ug.