

For Research Use Only

# IFN-gamma R2 Polyclonal antibody, PBS Only

Catalog Number: 10266-1-PBS



## Basic Information

<b>Catalog Number:</b> 10266-1-PBS	<b>GenBank Accession Number:</b> BC003624	<b>Purification Method:</b> Antigen affinity purification
<b>Size:</b> 100ug, Concentration: 1 mg/ml by Nanodrop;	<b>GeneID (NCBI):</b> 3460	
<b>Source:</b> Rabbit	<b>UNIPROT ID:</b> P38484	
<b>Isotype:</b> IgG	<b>Full Name:</b> interferon gamma receptor 2 (interferon gamma transducer 1)	
<b>Immunogen Catalog Number:</b> AG0317	<b>Calculated MW:</b> 45 kDa	
	<b>Observed MW:</b> 50-55 kDa	

## Applications

**Tested Applications:**  
WB, IHC, IP, Indirect ELISA

**Species Specificity:**  
human

## Background Information

Interferon-gamma (IFN- $\gamma$ ) is a cytokine critical for innate and adaptive immunity against viral and intracellular bacterial infections and for tumor control. Cellular responses to IFN- $\gamma$  are activated through its interaction with a heterodimeric receptor consisting of two subunits, IFNGR1 and IFNGR2. IFNGR1 is the ligand-binding subunit which binds IFN- $\gamma$  with high affinity, whereas IFNGR2 serves as the accessory subunit which attaches to IFN- $\gamma$  with a significantly lower affinity. Two subunits bind one IFN- $\gamma$  dimer. Defects in IFNGR2 are a cause of mendelian susceptibility to mycobacterial disease (MSMD), also known as familial disseminated atypical mycobacterial infection. (PMID: 17981204; 946248; 10888113)

## Storage

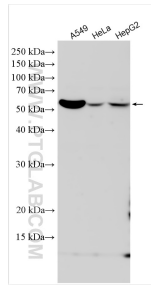
**Storage:**  
Store at -80°C.

**Storage Buffer:**  
PBS only, pH7.3

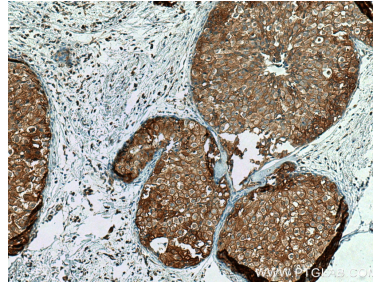
For technical support and original validation data for this product please contact:  
T: 1 (888) 4PTGLAB (1-888-478-4522) (toll free in USA), or 1(312) 455-8498 (outside USA)      E: proteintech@ptglab.com  
W: ptglab.com

This product is exclusively available under Proteintech Group brand and is not available to purchase from any other manufacturer.

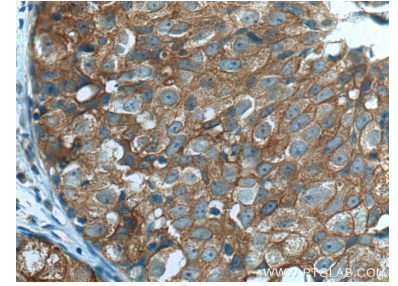
## Selected Validation Data



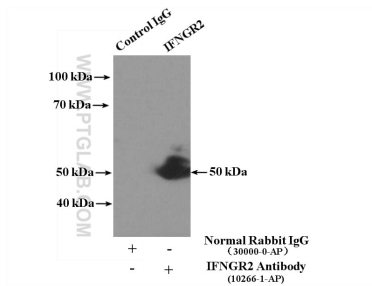
Various lysates were subjected to SDS PAGE followed by western blot with 10266-1-AP (IFNGR2 antibody) at dilution of 1:1500 incubated at room temperature for 1.5 hours. This data was developed using the same antibody clone with 10266-1-PBS in a different storage buffer formulation.



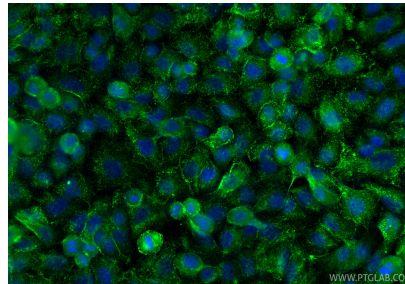
Immunohistochemical analysis of paraffin-embedded human breast cancer tissue slide using 10266-1-AP (IFNGR2 antibody) at dilution of 1:200 (under 10x lens). Heat mediated antigen retrieval with Tris-EDTA buffer (pH 9.0). This data was developed using the same antibody clone with 10266-1-PBS in a different storage buffer formulation.



Immunohistochemical analysis of paraffin-embedded human breast cancer tissue slide using 10266-1-AP (IFNGR2 antibody) at dilution of 1:200 (under 40x lens). Heat mediated antigen retrieval with Tris-EDTA buffer (pH 9.0). This data was developed using the same antibody clone with 10266-1-PBS in a different storage buffer formulation.



IP result of anti-IFNGR2 (IP:10266-1-AP, 4ug; Detection:10266-1-AP 1:500) with A549 cells lysate 1800ug. This data was developed using the same antibody clone with 10266-1-PBS in a different storage buffer formulation.



Immunofluorescent analysis of (-20°C Methanol) fixed A549 cells using IFN-gamma R2 antibody (10266-1-AP) at dilution of 1:400 and CoralLite@488-Conjugated Goat Anti-Rabbit IgG(H+L) (SA00013-2). This data was developed using the same antibody clone with 10266-1-PBS in a different storage buffer formulation.