

For Research Use Only

FKBP1A Polyclonal antibody

Catalog Number: 10273-1-AP

Featured Product

4 Publications



Basic Information

Catalog Number:

10273-1-AP

Size:

150ul, Concentration: 500 µg/ml by Nanodrop and 260 µg/ml by Bradford method using BSA as the standard;

Source:

Rabbit

Isotype:

IgG

Immunogen Catalog Number:

AG0406

GenBank Accession Number:

BC001925

GeneID (NCBI):

2280

Full Name:

FK506 binding protein 1A, 12kDa

Calculated MW:

12 kDa

Observed MW:

12-16 kDa

Purification Method:

Antigen affinity purification

Recommended Dilutions:

WB 1:500-1:2000

IHC 1:20-1:200

Applications

Tested Applications:

IHC, WB, ELISA

Cited Applications:

WB

Species Specificity:

human, mouse

Cited Species:

human, pig

Note-IHC: suggested antigen retrieval with TE buffer pH 9.0; (*) Alternatively, antigen retrieval may be performed with citrate buffer pH 6.0

Positive Controls:

WB : mouse brain tissue, human heart tissue

IHC : human ovary tumor tissue,

Background Information

FKBP1A (FK506-binding protein 1A) is also named as FKBP1, FKBP12 and belongs to the FKBP-type PPIase family. It keeps in an inactive conformation TGFBR1, the TGF-beta type I serine/threonine kinase receptor, preventing TGF-beta receptor activation in absence of ligand and catalyzes the cis-trans isomerization of proline imidic peptide bonds in oligopeptides.

Notable Publications

Author	Pubmed ID	Journal	Application
Xiaodan Hou	29137396	Oncotarget	WB
Xinhua Hou	32480263	Food Chem	WB
Shen Mynn Tan	25131211	Cell Rep	WB

Storage

Storage:

Store at -20°C. Stable for one year after shipment.

Storage Buffer:

PBS with 0.02% sodium azide and 50% glycerol pH 7.3.

Aliquoting is unnecessary for -20°C storage

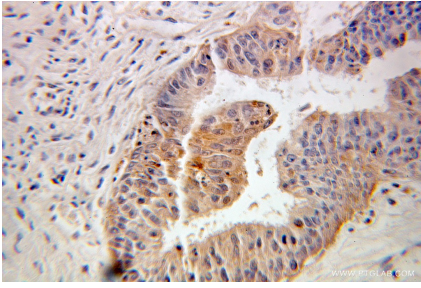
For technical support and original validation data for this product please contact:

T: 1 (888) 4PTGLAB (1-888-478-4522) (toll free in USA), or 1(312) 455-8498 (outside USA)

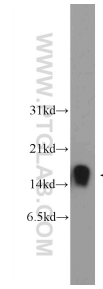
E: proteintech@ptglab.com
W: ptglab.com

This product is exclusively available under Proteintech Group brand and is not available to purchase from any other manufacturer.

Selected Validation Data



Immunohistochemical analysis of paraffin-embedded human ovary tumor using 10273-1-AP (FKBP1A antibody) at dilution of 1:100 (under 25x lens).



mouse brain tissue were subjected to SDS PAGE followed by western blot with 10273-1-AP (FKBP1A Antibody) at dilution of 1:1000 incubated at room temperature for 1.5 hours.