

For Research Use Only

TRAPB/SSR2 Polyclonal antibody

Catalog Number: 10278-1-AP

Featured Product

8 Publications



Basic Information

Catalog Number: 10278-1-AP	GenBank Accession Number: BC000341	Purification Method: Antigen affinity purification
Size: 150ul , Concentration: 300 µg/ml by Nanodrop and 287 µg/ml by Bradford method using BSA as the standard;	GeneID (NCBI): 6746	Recommended Dilutions: WB 1:1000-1:8000 IHC 1:20-1:200 IF 1:50-1:500
Source: Rabbit	Full Name: signal sequence receptor, beta (translocon-associated protein beta)	
Isotype: IgG	Calculated MW: 20 kDa	
Immunogen Catalog Number: AG0304	Observed MW: 22-25 kDa	

Applications

Tested Applications:
FC, IF, IHC, WB, ELISA

Cited Applications:
IHC, IP, WB

Species Specificity:
human, mouse, rat

Cited Species:
human, rat

Note-IHC: suggested antigen retrieval with TE buffer pH 9.0; (*) Alternatively, antigen retrieval may be performed with citrate buffer pH 6.0

Positive Controls:

WB : HepG2 cells, L02 cells, mouse liver tissue, rat liver tissue

IHC : human breast cancer tissue, human pancreas tissue

IF : HepG2 cells,

Background Information

TRAPB (translocon-associated protein subunit beta), also known as SSR2 (signal sequence receptor subunit beta), is a 22-kDa single-spanning membrane glycoprotein of the endoplasmic reticulum (ER) (PMID: 7789174). It is a part of the tetrameric TRAP complex (TRAP-alpha, TRAP-beta, TRAP-delta and TRAP-gamma) which functions in regulating the retention of ER resident proteins (PMID: 7916687). The TRAP complex is also involved in endoplasmic reticulum-associated degradation (ERAD) (PMID: 17380188).

Notable Publications

Author	Pubmed ID	Journal	Application
Xianyan Hu	32645369	Mol Cell	WB
Zhibin Liao	33485374	J Exp Clin Cancer Res	WB
Chatchai Phoomak	33523898	Sci Adv	WB

Storage

Storage:

Store at -20°C. Stable for one year after shipment.

Storage Buffer:

PBS with 0.02% sodium azide and 50% glycerol pH 7.3.

Aliquoting is unnecessary for -20°C storage

*** 20ul sizes contain 0.1% BSA

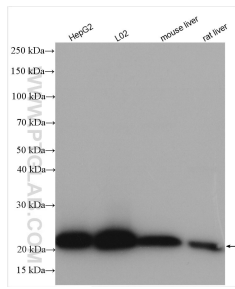
For technical support and original validation data for this product please contact:

T: 1 (888) 4PTGLAB (1-888-478-4522) (toll free in USA), or 1(312) 455-8498 (outside USA)

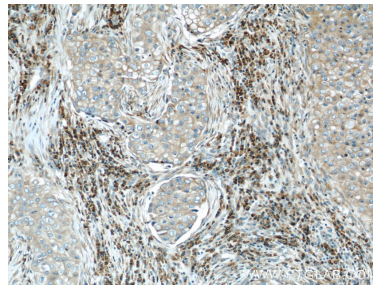
E: proteintech@ptglab.com
W: ptglab.com

This product is exclusively available under Proteintech Group brand and is not available to purchase from any other manufacturer.

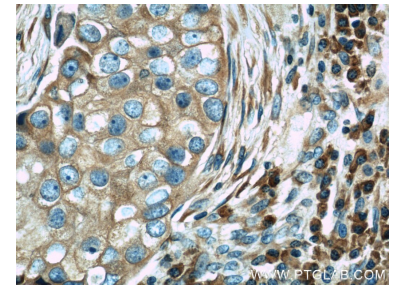
Selected Validation Data



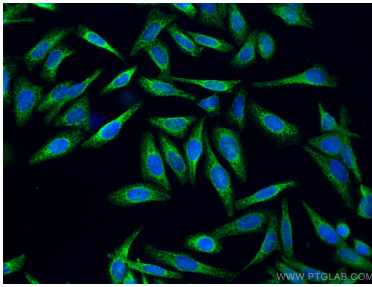
Various lysates were subjected to SDS PAGE followed by western blot with 10278-1-AP (TRAPB/SSR2 antibody) at dilution of 1:4000 incubated at room temperature for 1.5 hours.



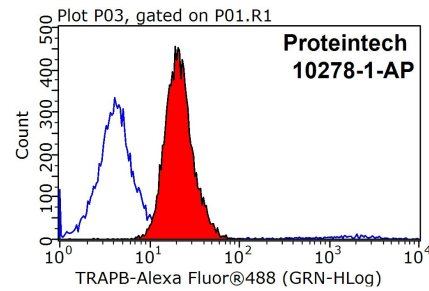
Immunohistochemical analysis of paraffin-embedded human breast cancer using 10278-1-AP (TRAPB/SSR2 antibody) at dilution of 1:50 (under 10x lens).



Immunohistochemical analysis of paraffin-embedded human breast cancer using 10278-1-AP (TRAPB/SSR2 antibody) at dilution of 1:50 (under 40x lens).



Immunofluorescent analysis of (4% PFA) fixed HepG2 cells using TRAPB/SSR2 antibody (10278-1-AP) at dilution of 1:200 and CoraLite@488-Conjugated AffiniPure Goat Anti-Rabbit IgG(H+L).



1x10⁶ MCF-7 cells were stained with 0.2ug TRAPB/SSR2 antibody (10278-1-AP, red) and control antibody (blue). Fixed with 90% MeOH blocked with 3% BSA (30 min). Alexa Fluor 488-conjugated AffiniPure Goat Anti-Rabbit IgG(H+L) with dilution 1:1000.