

For Research Use Only

CYPC Polyclonal antibody

Catalog Number: 10287-2-AP

Featured Product

7 Publications



Basic Information

Catalog Number:

10287-2-AP

Size:

150ul, Concentration: 450 ug/ml by Nanodrop and 300 ug/ml by Bradford method using BSA as the standard;

Source:

Rabbit

Isotype:

IgG

Immunogen Catalog Number:

AG0209

GenBank Accession Number:

BC002678

GeneID (NCBI):

5480

UNIPROT ID:

P45877

Full Name:

peptidylprolyl isomerase C (cyclophilin C)

Calculated MW:

23 kDa

Observed MW:

23 kDa

Purification Method:

Antigen affinity purification

Recommended Dilutions:

WB 1:500-1:3000

IHC 1:20-1:200

IF/ICC 1:200-1:800

Applications

Tested Applications:

WB, IHC, IF/ICC, ELISA

Cited Applications:

WB, IHC

Species Specificity:

human, mouse, rat

Cited Species:

human, mouse

Note-IHC: suggested antigen retrieval with TE buffer pH 9.0; (*) Alternatively, antigen retrieval may be performed with citrate buffer pH 6.0

Positive Controls:

WB: HeLa cells, HuH-7 cells, HEK-293 cells, mouse heart tissue

IHC: human heart tissue, mouse kidney tissue

IF/ICC: HEK-293 cells,

Background Information

Cyclophilin C also named as peptidyl-prolyl cis-trans isomerase C (PPIC), is expressed in several bone marrow (BM) hematopoietic progenitors and in T-cell precursors (PMID: 33864384). CYPC/PPIC catalyze the cis-trans isomerization of proline imidic peptide bonds in oligopeptides and accelerate the folding of proteins. Similar to other PPIases, this protein can bind immunosuppressant cyclosporin A. In addition, CYPC/PPIC is involved in many biological processes, including mitochondrial metabolism, REDOX and inflammation, as well as related diseases and conditions, such as ischemia-reperfusion injury, AIDS and cancer.

Notable Publications

Author	Pubmed ID	Journal	Application
Rebeca Alvaríño	36277217	Front Physiol	WB
Paloma Gómez-Fernández	31108847	Int J Mol Sci	WB
Udayan Chatterji	19380579	J Biol Chem	WB

Storage

Storage:

Store at -20°C. Stable for one year after shipment.

Storage Buffer:

PBS with 0.02% sodium azide and 50% glycerol pH 7.3.

Aliquoting is unnecessary for -20°C storage

*** 20ul sizes contain 0.1% BSA

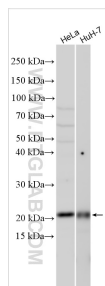
For technical support and original validation data for this product please contact:

T: 1 (888) 4PTGLAB (1-888-478-4522) (toll free in USA), or 1(312) 455-8498 (outside USA)

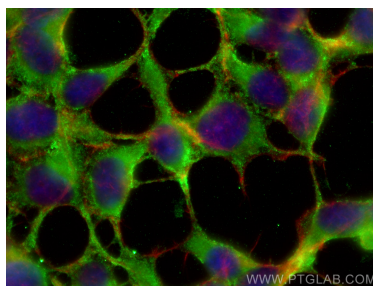
E: proteintech@ptglab.com
W: ptglab.com

This product is exclusively available under Proteintech Group brand and is not available to purchase from any other manufacturer.

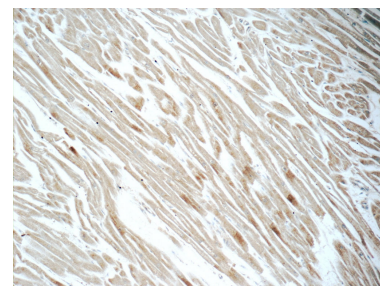
Selected Validation Data



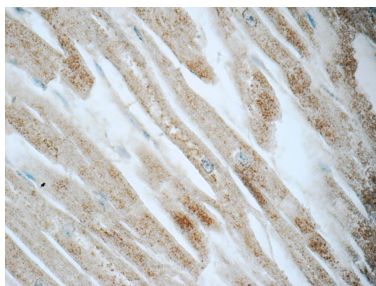
Various lysates were subjected to SDS PAGE followed by western blot with 10287-2-AP (CYPC antibody) at dilution of 1:1500 incubated at room temperature for 1.5 hours.



Immunofluorescent analysis of (-20°C Ethanol) fixed HEK-293 cells using CYPC antibody (10287-2-AP) at dilution of 1:400 and CoraLite® 488-Conjugated Goat Anti-Rabbit IgG(H+L), CL594-Phalloidin (red).



Immunohistochemical analysis of paraffin-embedded human heart tissue slide using 10287-2-AP (CYPC Antibody) at dilution of 1:50 (under 10x lens).



Immunohistochemical analysis of paraffin-embedded human heart tissue slide using 10287-2-AP (CYPC Antibody) at dilution of 1:50 (under 40x lens).