

For Research Use Only

GPRC5A,RAI3 Polyclonal antibody

Catalog Number:10309-1-AP

Featured Product

8 Publications



Basic Information

Catalog Number:

10309-1-AP

Size:

150ul , Concentration: 240 µg/ml by Nanodrop and 233 µg/ml by Bradford method using BSA as the standard;

Source:

Rabbit

Isotype:

IgG

Immunogen Catalog Number:

AG0311

GenBank Accession Number:

BC003665

GeneID (NCBI):

9052

Full Name:

G protein-coupled receptor, family C, group 5, member A

Calculated MW:

40 kDa

Observed MW:

40-45 kDa

Purification Method:

Antigen affinity purification

Recommended Dilutions:

WB 1:1000-1:6000

IHC 1:50-1:500

Applications

Tested Applications:

FC, IHC, WB, ELISA

Cited Applications:

IHC, WB

Species Specificity:

human, mouse

Cited Species:

human, goat

Note-IHC: suggested antigen retrieval with TE buffer pH 9.0; (*) Alternatively, antigen retrieval may be performed with citrate buffer pH 6.0

Positive Controls:

WB : A375 cells, MCF-7 cells, HeLa cells, RAW 264.7 cells

IHC : human lung cancer tissue, human breast cancer tissue

Background Information

GPRC5A, also named as GPCR5A, RAI3 and RAIG1, belongs to the G-protein coupled receptor 3 family. It is an orphan G-protein coupled receptor (GPCR) that has been associated with malignancy and may play a role in the proliferation of breast cancer cells. GPRC5A is a potential molecular target for treatment of breast cancers. It is suppressed in some human lung carcinoma cells. (PMID:15788639, 20563252, 19552806)

Notable Publications

Author	Pubmed ID	Journal	Application
Er Jin	30655793	Oncol Lett	WB
Yu Chen	36358856	Cancers (Basel)	WB
Jin Er	32410473	Exp Lung Res	WB

Storage

Storage:

Store at -20°C. Stable for one year after shipment.

Storage Buffer:

PBS with 0.02% sodium azide and 50% glycerol pH 7.3.

Aliquoting is unnecessary for -20°C storage

*** 20ul sizes contain 0.1% BSA

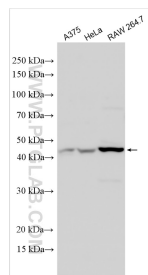
For technical support and original validation data for this product please contact:

T: 1 (888) 4PTGLAB (1-888-478-4522) (toll free in USA), or 1(312) 455-8498 (outside USA)

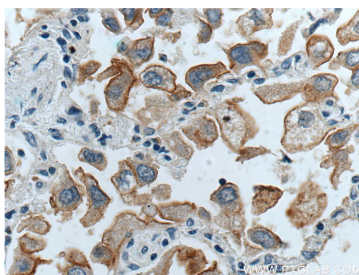
E: proteintech@ptglab.com
W: ptglab.com

This product is exclusively available under Proteintech Group brand and is not available to purchase from any other manufacturer.

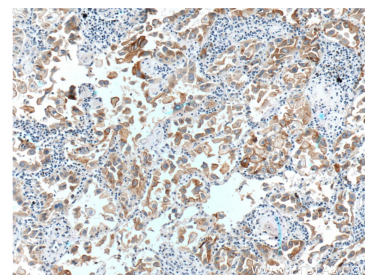
Selected Validation Data



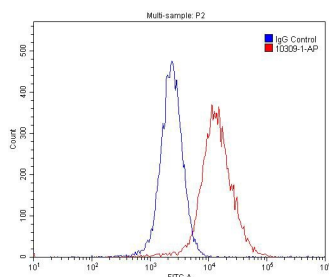
Various lysates were subjected to SDS PAGE followed by western blot with 10309-1-AP (GPRC5A,RAI3 antibody) at dilution of 1:3000 incubated at room temperature for 1.5 hours.



Immunohistochemical analysis of paraffin-embedded human lung cancer tissue slide using 10309-1-AP (GPRC5A,RAI3 Antibody) at dilution of 1:200 (under 40x lens).



Immunohistochemical analysis of paraffin-embedded human lung cancer tissue slide using 10309-1-AP (GPRC5A,RAI3 Antibody) at dilution of 1:200 (under 10x lens).



1X10⁶ MCF-7 cells were stained with 0.2ug GPRC5A,RAI3 antibody (10309-1-AP, red) and control antibody (blue). Fixed with 4% PFA blocked with 3% BSA (30 min). Alexa Fluor 488-conjugated AffiniPure Goat Anti-Rabbit IgG(H+L) with dilution 1:1500.