

For Research Use Only

MPV17 Polyclonal antibody

Catalog Number: 10310-1-AP

Featured Product

12 Publications



Basic Information

Catalog Number:

10310-1-AP

Size:

150ul, Concentration: 133 ug/ml by Bradford method using BSA as the standard;

Source:

Rabbit

Isotype:

IgG

Immunogen Catalog Number:

AG0312

GenBank Accession Number:

BC001115

GeneID (NCBI):

4358

UNIPROT ID:

P39210

Full Name:

Mpv17 mitochondrial inner membrane protein

Calculated MW:

20 kDa

Observed MW:

20 kDa

Purification Method:

Antigen affinity purification

Recommended Dilutions:

WB 1:1000-1:4000

IHC 1:250-1:1000

IF/ICC 1:50-1:500

Applications

Tested Applications:

WB, IHC, IF/ICC, ELISA

Cited Applications:

WB, IF, IP

Species Specificity:

human, mouse, rat

Cited Species:

human, mouse, rat

Positive Controls:

WB: A549 cells, HeLa cells, HepG2 cells, mouse heart tissue, rat heart tissue

IHC: human intrahepatic cholangiocarcinoma tissue,

IF/ICC: HepG2 cells,

Note-IHC: suggested antigen retrieval with TE buffer pH 9.0; (*) Alternatively, antigen retrieval may be performed with citrate buffer pH 6.0

Background Information

MPV17, also termed as SYM1, encodes an inner mitochondrial membrane protein. It's potential candidate that may account for the mitochondrial (mt) DNA depletion syndromes (MDDS) characterized by a severe, tissue-specific decrease of mtDNA copy number and ultimate organ failure. It's a human ortholog of the mouse kidney disease gene Mpv17. Absence or malfunction of MPV17 causes oxidative phosphorylation (OXPHOS) failure and mtDNA depletion, not only in affected individuals but also in Mpv17^{-/-} mice. MPV17 contribute to ROS homeostasis, but the downstream signaling is unknown yet. Catalog# 10310-1-AP is a rabbit polyclonal antibody raised against the full-length of human MPV17.

Notable Publications

Author	Pubmed ID	Journal	Application
Morgane Canonne	32155188	PLoS One	WB
Ilaria Dalla Rosa	24948607	Nucleic Acids Res	WB
Gabriela Casalena	24598802	Am J Physiol Renal Physiol	IF

Storage

Storage:

Store at -20°C. Stable for one year after shipment.

Storage Buffer:

PBS with 0.02% sodium azide and 50% glycerol pH 7.3.

Aliquoting is unnecessary for -20°C storage

*** 20ul sizes contain 0.1% BSA

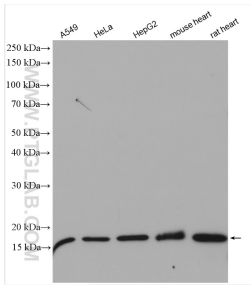
For technical support and original validation data for this product please contact:

T: 1 (888) 4PTGLAB (1-888-478-4522) (toll free in USA), or 1(312) 455-8498 (outside USA)

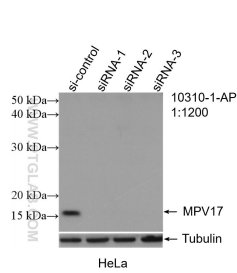
E: proteintech@ptglab.com
W: ptglab.com

This product is exclusively available under Proteintech Group brand and is not available to purchase from any other manufacturer.

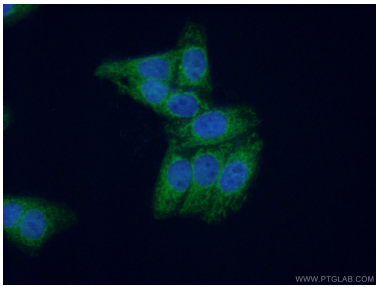
Selected Validation Data



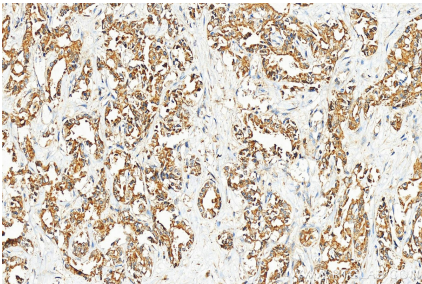
Various lysates were subjected to SDS PAGE followed by western blot with 10310-1-AP (MPV17 antibody) at dilution of 1:2000 incubated at room temperature for 1.5 hours.



WB result of MPV17 antibody (10310-1-AP; 1:1200; incubated at room temperature for 1.5 hours) with sh-Control and sh-MPV17 transfected HeLa cells.



Immunofluorescent analysis of (4% PFA) fixed HepG2 cells using 10310-1-AP (MPV17 antibody) at dilution of 1:50 and Alexa Fluor 488-conjugated AffiniPure Goat Anti-Rabbit IgG(H+L).



Immunohistochemical analysis of paraffin-embedded human intrahepatic cholangiocarcinoma tissue slide using 10310-1-AP (MPV17 antibody) at dilution of 1:500 (under 20x lens). Heat mediated antigen retrieval with Tris-EDTA buffer (pH 9.0).