

For Research Use Only

WBP11 Polyclonal antibody

Catalog Number: 10316-1-AP



Basic Information

Catalog Number:

10316-1-AP

Size:

150ul, Concentration: 800 ug/ml by Nanodrop and 427 ug/ml by Bradford method using BSA as the standard;

Source:

Rabbit

Isotype:

IgG

Immunogen Catalog Number:

AG0366

GenBank Accession Number:

BC001621

GeneID (NCBI):

51729

UNIPROT ID:

Q9Y2W2

Full Name:

WW domain binding protein 11

Calculated MW:

70 kDa

Observed MW:

66-70 kDa

Purification Method:

Antigen affinity purification

Recommended Dilutions:

WB 1:1000-1:6000

IP 0.5-4.0 ug for 1.0-3.0 mg of total protein lysate

IHC 1:50-1:500

Applications

Tested Applications:

WB, IHC, IP, ELISA

Species Specificity:

human, mouse, rat

Note-IHC: suggested antigen retrieval with TE buffer pH 9.0; (*) Alternatively, antigen retrieval may be performed with citrate buffer pH 6.0

Positive Controls:

WB : HeLa cells, mouse heart tissue

IP : mouse heart tissue,

IHC : human breast cancer tissue,

Background Information

WBP11 (WW domain-binding protein 11) is a protein that in humans, is encoded by the WBP11 gene. The function of WBP11 is to play a role in the regulation of pre-mRNA processing. More specifically, this nuclear protein, colocalizes with mRNA splicing factors and intermediate filament-containing perinuclear networks. The predicted MW of this protein is 70 kDa, and this antibody specially recognises the 70 kDa protein.

Storage

Storage:

Store at -20°C. Stable for one year after shipment.

Storage Buffer:

PBS with 0.02% sodium azide and 50% glycerol pH 7.3.

Aliquoting is unnecessary for -20°C storage

*** 20ul sizes contain 0.1% BSA

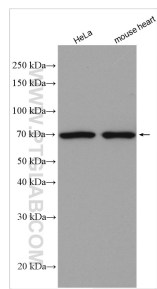
For technical support and original validation data for this product please contact:

T: 1 (888) 4PTGLAB (1-888-478-4522) (toll free in USA), or 1(312) 455-8498 (outside USA)

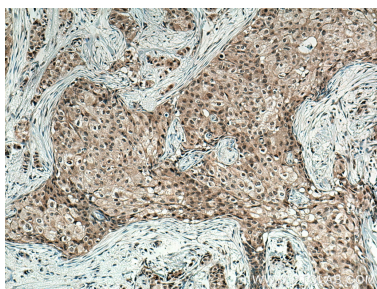
E: proteintech@ptglab.com
W: ptglab.com

This product is exclusively available under Proteintech Group brand and is not available to purchase from any other manufacturer.

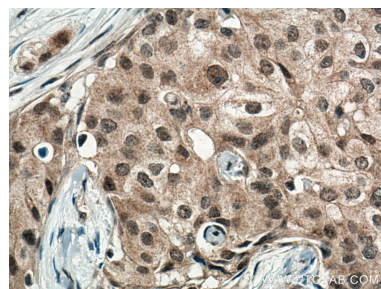
Selected Validation Data



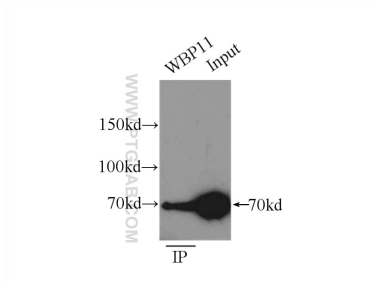
Various lysates were subjected to SDS PAGE followed by western blot with 10316-1-AP (WBP11 antibody) at dilution of 1:3000 incubated at room temperature for 1.5 hours.



Immunohistochemical analysis of paraffin-embedded human breast cancer tissue slide using 10316-1-AP (WBP11 antibody) at dilution of 1:200 (under 10x lens). Heat mediated antigen retrieval with Tris-EDTA buffer (pH 9.0).



Immunohistochemical analysis of paraffin-embedded human breast cancer tissue slide using 10316-1-AP (WBP11 antibody) at dilution of 1:200 (under 40x lens). Heat mediated antigen retrieval with Tris-EDTA buffer (pH 9.0).



IP result of anti-WBP11 (IP:10316-1-AP, 3ug; Detection:10316-1-AP 1:500) with mouse heart tissue lysate 6000ug.