

For Research Use Only

TCP1 Polyclonal antibody

Catalog Number: 10320-1-AP **8 Publications**



Basic Information

Catalog Number:
10320-1-AP

Size:
150ul, Concentration: 800 µg/ml by Nanodrop and 333 µg/ml by Bradford method using BSA as the standard;

Source:
Rabbit

Isotype:
IgG

Immunogen Catalog Number:
AG0389

GenBank Accession Number:
BC000665

GeneID (NCBI):
6950

Full Name:
t-complex 1

Calculated MW:
60 kDa

Observed MW:
55-60 kDa

Purification Method:
Antigen affinity purification

Recommended Dilutions:
WB 1:2000-1:10000
IP 0.5-4.0 ug for IP and 1:200-1:1000 for WB
IHC 1:20-1:200
IF 1:50-1:500

Applications

Tested Applications:
FC, IF, IHC, IP, WB, ELISA

Cited Applications:
IF, IP, WB

Species Specificity:
human, mouse

Cited Species:
human, mouse

Note-IHC: suggested antigen retrieval with TE buffer pH 9.0; (*) Alternatively, antigen retrieval may be performed with citrate buffer pH 6.0

Positive Controls:

WB: HeLa cells, Jurkat cells, mouse heart tissue, MCF-7 cells

IP: HeLa cells,

IHC: human colon tissue, human colon cancer tissue, human liver cancer tissue

IF: HeLa cells, MCF-7 cells

Background Information

Notable Publications

Author	Pubmed ID	Journal	Application
Cheng Liu	25397718	J Agric Food Chem	WB
Sandhya Gopal	30029015	Virology	IP
Ye Shan	26577520	J Alzheimers Dis	WB

Storage

Storage:

Store at -20°C. Stable for one year after shipment.

Storage Buffer:

PBS with 0.02% sodium azide and 50% glycerol pH 7.3.

Aliquoting is unnecessary for -20°C storage

***** 20ul sizes contain 0.1% BSA**

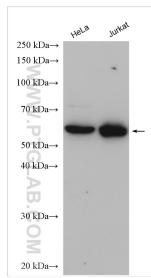
For technical support and original validation data for this product please contact:

T: 1 (888) 4PTGLAB (1-888-478-4522) (toll free in USA), or 1(312) 455-8498 (outside USA)

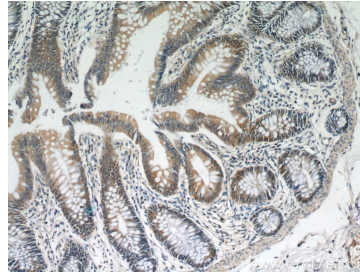
E: proteintech@ptglab.com
W: ptglab.com

This product is exclusively available under Proteintech Group brand and is not available to purchase from any other manufacturer.

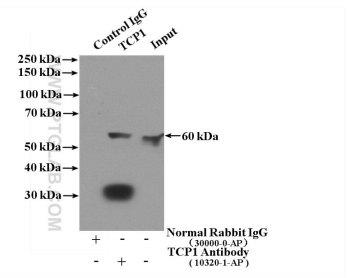
Selected Validation Data



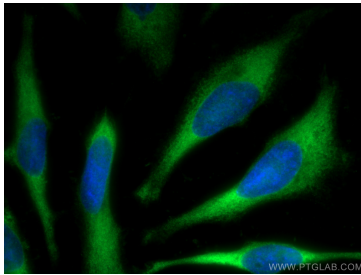
Various lysates were subjected to SDS PAGE followed by western blot with 10320-1-AP (TCP1 antibody) at dilution of 1:5000 incubated at room temperature for 1.5 hours.



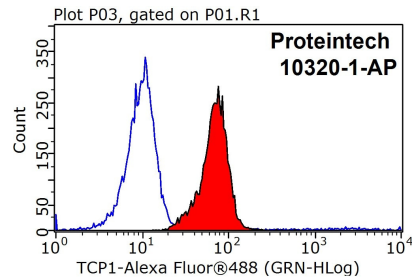
Immunohistochemical analysis of paraffin-embedded human colon using 10320-1-AP (TCP1 antibody) at dilution of 1:50 (under 10x lens).



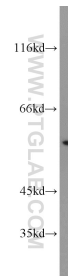
IP Result of anti-TCP1 (IP:10320-1-AP, 4 μ g; Detection:10320-1-AP 1:300) with HeLa cells lysate 1600 μ g.



Immunofluorescent analysis of (-20°C Methanol) fixed HeLa cells using TCP1 antibody (10320-1-AP) at dilution of 1:200 and CoraLite@488-Conjugated AffiniPure Goat Anti-Rabbit IgG(H+L).



1X10⁶ HeLa cells were stained with 0.2 μ g TCP1 antibody (10320-1-AP, red) and control antibody (blue). Fixed with 90% MeOH blocked with 3% BSA (30 min). Alexa Fluor 488-conjugated AffiniPure Goat Anti-Rabbit IgG(H+L) with dilution 1:1000.



MCF7 cells were subjected to SDS PAGE followed by western blot with 10320-1-AP (TCP1 antibody) at dilution of 1:1000 incubated at room temperature for 1.5 hours.