

For Research Use Only

TRAP1 Polyclonal antibody

Catalog Number: 10325-1-AP

Featured Product

11 Publications



Basic Information

Catalog Number: 10325-1-AP	GenBank Accession Number: BC000406	Purification Method: Antigen affinity purification
Size: 150ul , Concentration: 500 µg/ml by Nanodrop and 320 µg/ml by Bradford method using BSA as the standard;	GeneID (NCBI): 10131	Recommended Dilutions: WB 1:1000-1:6000 IHC 1:20-1:200 IF 1:200-1:800
Source: Rabbit	Full Name: TNF receptor-associated protein 1	
Isotype: IgG	Calculated MW: 80 kDa	
Immunogen Catalog Number: AG0400	Observed MW: 66-70 kDa, 60 kDa	

Applications

Tested Applications:
FC, IF, IHC, WB, ELISA

Cited Applications:
IF, IHC, WB

Species Specificity:
human, mouse, rat

Cited Species:
human, mouse

Note-IHC: suggested antigen retrieval with TE buffer pH 9.0; (*) Alternatively, antigen retrieval may be performed with citrate buffer pH 6.0

Positive Controls:

WB : HL-60 cells, HeLa cells, mouse heart tissue, Raji cells, HepG2 cells, K-562 cells, NIH/3T3 cells

IHC : human heart tissue,

IF : HepG2 cells,

Background Information

TNF receptor-associated protein 1 (TRAP1, synonym: HSP75) is a member of the HSP90 family of molecular chaperones, and is expressed ubiquitously and located to mitochondria. A unique LxCxE motif in HSP75, but not in other HSP90 family members, appears to be important for binding to the simian virus 40 T-antigen-binding domain of hypophosphorylated Rb. Data also suggests that suppression of the expression of TRAP1 in mitochondria plays an important role in the induction of apoptosis caused via formation of reactive oxygen species (ROS).

Notable Publications

Author	Pubmed ID	Journal	Application
Hongyu Sun	36233059	Int J Mol Sci	WB
Jun Ma	34820015	Oncol Lett	WB
Katsutaka Mitachi	33753854	Sci Rep	IHC

Storage

Storage:

Store at -20°C. Stable for one year after shipment.

Storage Buffer:

PBS with 0.02% sodium azide and 50% glycerol pH 7.3.

Aliquoting is unnecessary for -20°C storage

*** 20ul sizes contain 0.1% BSA

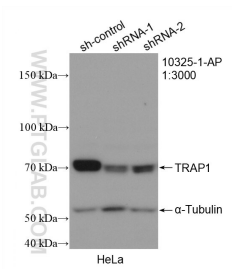
For technical support and original validation data for this product please contact:

T: 1 (888) 4PTGLAB (1-888-478-4522) (toll free in USA), or 1(312) 455-8498 (outside USA)

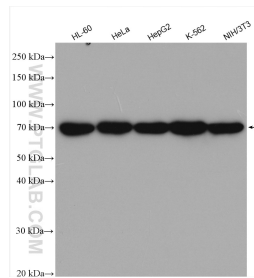
E: proteintech@ptglab.com
W: ptglab.com

This product is exclusively available under Proteintech Group brand and is not available to purchase from any other manufacturer.

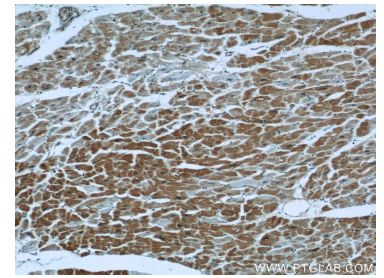
Selected Validation Data



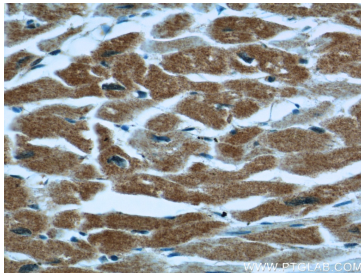
WB result of TRAP1 antibody (10325-1-AP; 1:3000; incubated at room temperature for 1.5 hours) with sh-Control and sh-TRAP1 transfected HeLa cells.



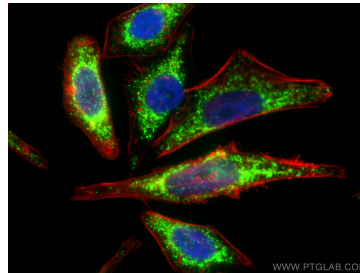
Various lysates were subjected to SDS PAGE followed by western blot with 10325-1-AP (TRAP1 antibody) at dilution of 1:3000 incubated at room temperature for 1.5 hours.



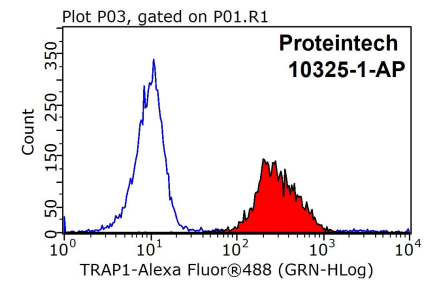
Immunohistochemical analysis of paraffin-embedded human heart using 10325-1-AP (TRAP1 antibody) at dilution of 1:50 (under 10x lens).



Immunohistochemical analysis of paraffin-embedded human heart using 10325-1-AP (TRAP1 antibody) at dilution of 1:50 (under 40x lens).



Immunofluorescent analysis of (4% PFA) fixed HepG2 cells using TRAP1 antibody (10325-1-AP) at dilution of 1:400 and CoraLite@488-Conjugated AffiniPure Goat Anti-Rabbit IgG(H+L).



1×10^6 HeLa cells were stained with 0.2ug TRAP1 antibody (10325-1-AP, red) and control antibody (blue). Fixed with 90% MeOH blocked with 3% BSA (30 min). Alexa Fluor 488-conjugated AffiniPure Goat Anti-Rabbit IgG(H+L) with dilution 1:1000.