

For Research Use Only

RAMP1 Polyclonal antibody

Catalog Number: 10327-1-AP **3 Publications**



Basic Information

Catalog Number: 10327-1-AP	GenBank Accession Number: BC000548	Purification Method: Antigen affinity purification
Size: 150ul, Concentration: 547 µg/ml by Bradford method using BSA as the standard;	GeneID (NCBI): 10267	Recommended Dilutions: WB 1:500-1:3000 IHC 1:50-1:500
Source: Rabbit	Full Name: receptor (G protein-coupled) activity modifying protein 1	
Isotype: IgG	Calculated MW: 17 kDa	
Immunogen Catalog Number: AG0402	Observed MW: 14 kDa, 35 kDa	

Applications

Tested Applications: FC, IHC, WB, ELISA	Positive Controls:
Cited Applications: IF, IHC, WB	WB: mouse heart tissue, human heart tissue, rat heart tissue
Species Specificity: human, mouse, rat	IHC: human small intestine tissue,
Cited Species: rat	
Note-IHC: suggested antigen retrieval with TE buffer pH 9.0; (*) Alternatively, antigen retrieval may be performed with citrate buffer pH 6.0	

Background Information

RAMP1 (receptor-activity-modifying protein) is a member of the RAMP family of single-transmembrane-domain proteins which consist of an N-terminal extracellular domain, a transmembrane region, and a short intracellular C-terminal tail. RAMPs are required to transport calcitonin-receptor-like receptor (CRLR) to the plasma membrane. CRLR, a G protein-coupled receptor, can function as either a calcitonin gene-related peptide (CGRP) receptor or an adrenomedullin receptor, depending on which members of the RAMP family are expressed. RAMP1 transports the CRLR to the plasma membrane and then remains associated with it to function as a terminally glycosylated CGRP receptor, while RAMP2 and RAMP3 transfer the CRLR to the cell surface to generate receptors that are preferentially selective for adrenomedullin. RAMP1 can form a homodimer which migrates at 30-37 kDa on SDS-PAGE. (PMID: 9620797; 16188935; 12051717; PMID: 18384073)

Notable Publications

Author	Pubmed ID	Journal	Application
Dingding Liu	35350752	Front Pharmacol	WB,IHC
Ruimin Tian	35260079	J Headache Pain	IF
Vause Carrie V CV	20138125	Neurosci Lett	IF

Storage

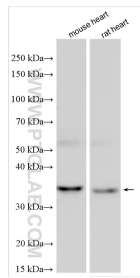
Storage:
Store at -20°C. Stable for one year after shipment.
Storage Buffer:
PBS with 0.02% sodium azide and 50% glycerol pH 7.3.
Aliquoting is unnecessary for -20°C storage

*** 20ul sizes contain 0.1% BSA

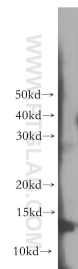
For technical support and original validation data for this product please contact:
T: 1 (888) 4PTGLAB (1-888-478-4522) (toll free in USA), or 1(312) 455-8498 (outside USA)
E: proteintech@ptglab.com
W: ptglab.com

This product is exclusively available under Proteintech Group brand and is not available to purchase from any other manufacturer.

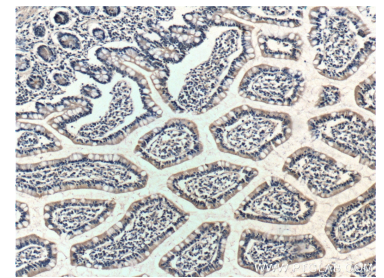
Selected Validation Data



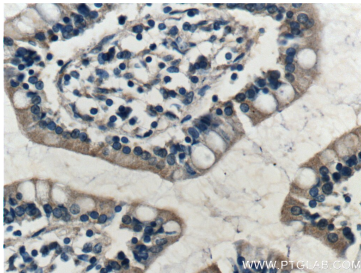
Various lysates were subjected to SDS PAGE followed by western blot with 10327-1-AP (RAMP1 antibody) at dilution of 1:1500 incubated at room temperature for 1.5 hours.



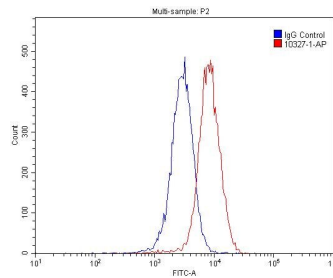
human heart tissue were subjected to SDS PAGE followed by western blot with 10327-1-AP (RAMP1 antibody) at dilution of 1:300 incubated at room temperature for 1.5 hours.



Immunohistochemical analysis of paraffin-embedded human small intestine tissue slide using 10327-1-AP (RAMP1 Antibody) at dilution of 1:200 (under 10x lens).



Immunohistochemical analysis of paraffin-embedded human small intestine tissue slide using 10327-1-AP (RAMP1 Antibody) at dilution of 1:200 (under 40x lens).



1×10^6 HepG2 cells were stained with .2ug RAMP1 antibody (10327-1-AP, red) and control antibody (blue). Fixed with 4% PFA blocked with 3% BSA (30 min). Alexa Fluor 488-conjugated AffiniPure Goat Anti-Rabbit IgG(H+L) with dilution 1:1500.