

For Research Use Only

U2AF35 Polyclonal antibody

Catalog Number: 10334-1-AP

Featured Product

11 Publications



Basic Information

Catalog Number:

10334-1-AP

Size:

150ul, Concentration: 350 ug/ml by Nanodrop and 187 ug/ml by Bradford method using BSA as the standard;

Source:

Rabbit

Isotype:

IgG

Immunogen Catalog Number:

AG0399

GenBank Accession Number:

BC001923

GeneID (NCBI):

7307

UNIPROT ID:

Q01081

Full Name:

U2 small nuclear RNA auxiliary factor 1

Calculated MW:

28 kDa

Observed MW:

35 kDa

Purification Method:

Antigen affinity purification

Recommended Dilutions:

WB 1:500-1:2000

IHC 1:20-1:200

Applications

Tested Applications:

WB, IHC, ELISA

Cited Applications:

WB

Species Specificity:

human

Cited Species:

human

Positive Controls:

WB : COLO 320 cells, HeLa cells

IHC : human prostate cancer tissue,

Note-IHC: suggested antigen retrieval with TE buffer pH 9.0; (*) Alternatively, antigen retrieval may be performed with citrate buffer pH 6.0

Background Information

U2 auxiliary factor (U2AF), comprising a large and a small subunit, is a non-snRNP protein required for the binding of U2 snRNP to the pre-mRNA branch site. U2 (RNU2) small nuclear RNA auxiliary factor 1 (U2AF1, synonyms: RN, FP793, U2AF35, U2AFBP, RNU2AF1) is the small subunit which plays a critical role in both constitutive and enhancer-dependent RNA splicing by directly mediating interactions between the large subunit and proteins bound to the enhancers. The U2AF1 gene is localized to chromosome 21q22.3, which is the critical region for three diseases, progressive myoclonus epilepsy, autoimmune polyglandular disease type 1, and one form of bipolar affective disorder.

Notable Publications

Author	Pubmed ID	Journal	Application
Tatiana Kováčová	32911621	Int J Mol Sci	WB
Jana Kralovicova	20628762	Hum Genet	WB
Sung Mi Park	27184077	Mol Cell	WB

Storage

Storage:

Store at -20°C. Stable for one year after shipment.

Storage Buffer:

PBS with 0.02% sodium azide and 50% glycerol pH 7.3.

Aliquoting is unnecessary for -20°C storage

*** 20ul sizes contain 0.1% BSA

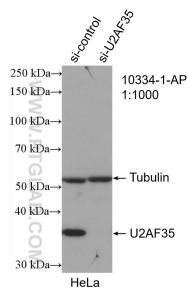
For technical support and original validation data for this product please contact:

T: 1 (888) 4PTGLAB (1-888-478-4522) (toll free in USA), or 1(312) 455-8498 (outside USA)

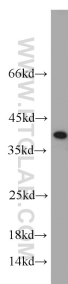
E: proteintech@ptglab.com
W: ptglab.com

This product is exclusively available under Proteintech Group brand and is not available to purchase from any other manufacturer.

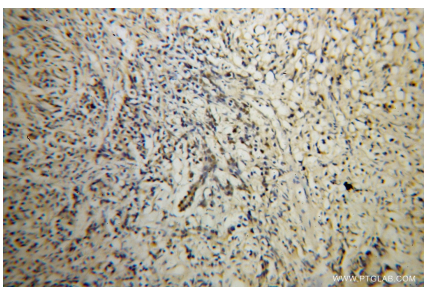
Selected Validation Data



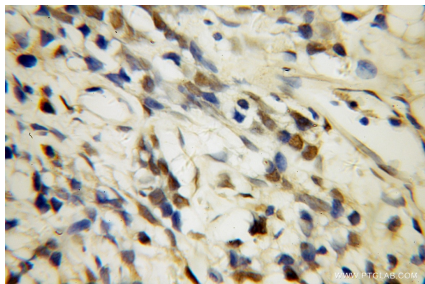
WB result of U2AF35 antibody (10334-1-AP; 1:1000; incubated at room temperature for 1.5 hours) with sh-Control and sh-U2AF35 transfected HeLa cells.



COLO 320 cells were subjected to SDS PAGE followed by western blot with 10334-1-AP (U2AF35 antibody) at dilution of 1:1000 incubated at room temperature for 1.5 hours.



Immunohistochemical analysis of paraffin-embedded human prostate cancer using 10334-1-AP (U2AF35 antibody) at dilution of 1:100 (under 10x lens).



Immunohistochemical analysis of paraffin-embedded human prostate cancer using 10334-1-AP (U2AF35 antibody) at dilution of 1:100 (under 40x lens).