

For Research Use Only

# MLPH Polyclonal antibody

Catalog Number: 10338-1-AP

Featured Product

24 Publications



## Basic Information

### Catalog Number:

10338-1-AP

### Size:

150ul, Concentration: 800 ug/ml by Nanodrop and 367 ug/ml by Bradford method using BSA as the standard;

### Source:

Rabbit

### Isotype:

IgG

### Immunogen Catalog Number:

AG0316

### GenBank Accession Number:

BC001653

### GeneID (NCBI):

79083

### UNIPROT ID:

Q9BV36

### Full Name:

melanophilin

### Calculated MW:

66 kDa

### Observed MW:

66 kDa, 80 kDa

### Purification Method:

Antigen affinity purification

### Recommended Dilutions:

WB: 1:500-1:1000

IP: 0.5-4.0 ug for 1.0-3.0 mg of total protein lysate

IHC: 1:50-1:500

IF/ICC: 1:20-1:200

## Applications

### Tested Applications:

WB, IHC, IF/ICC, IP, ELISA

### Cited Applications:

WB, IHC, IF, IP

### Species Specificity:

human

### Cited Species:

human, mouse

### Positive Controls:

WB: A375 cells,

IP: A375 cells,

IHC: human skin cancer tissue,

IF/ICC: HeLa cells, MCF-7 cells

**Note-IHC: suggested antigen retrieval with TE buffer pH 9.0; (\*) Alternatively, antigen retrieval may be performed with citrate buffer pH 6.0**

## Background Information

Melanophilin (Mlph) is a member of the exophilin subfamily of Rab effector proteins. MLPH is a modular protein, forming a ternary complex with the small Ras-related GTPase Rab27A in its GTP-bound form and the motor protein myosin Va. It regulates retention of melanosomes at the peripheral actin cytoskeleton of melanocytes, a process essential for normal mammalian pigmentation. Defects in MLPH are a cause of Griscelli syndrome type 3 (GS3), which is characterized by a silver-gray hair color and abnormal pigment distribution in the hair shaft.

## Notable Publications

Author	Pubmed ID	Journal	Application
Valentina Cetica	25312756	J Allergy Clin Immunol	WB, IP
Jacob Wang	19468668	J Gastroenterol	IHC
Qiaorong Huang	35602484	Front Med (Lausanne)	WB

## Storage

### Storage:

Store at -20°C. Stable for one year after shipment.

### Storage Buffer:

PBS with 0.02% sodium azide and 50% glycerol, pH7.3

Aliquoting is unnecessary for -20°C storage

\*\*\* 20ul sizes contain 0.1% BSA

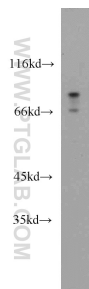
For technical support and original validation data for this product please contact:

T: 1 (888) 4PTGLAB (1-888-478-4522) (toll free in USA), or 1(312) 455-8498 (outside USA)

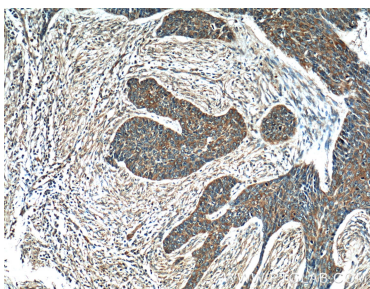
E: [proteintech@ptglab.com](mailto:proteintech@ptglab.com)  
W: [ptglab.com](http://ptglab.com)

This product is exclusively available under Proteintech Group brand and is not available to purchase from any other manufacturer.

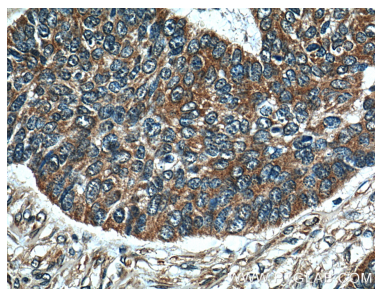
Selected Validation Data



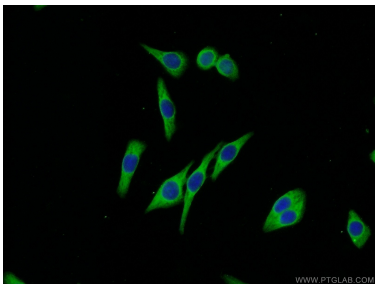
A375 cells were subjected to SDS PAGE followed by western blot with 10338-1-AP (Melanophilin antibody) at dilution of 1:1000 incubated at room temperature for 1.5 hours.



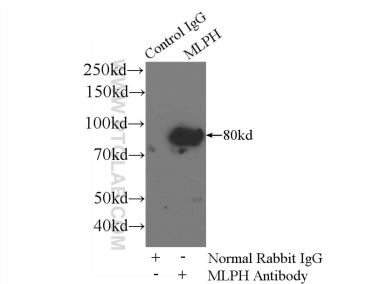
Immunohistochemical analysis of paraffin-embedded human skin cancer tissue slide using 10338-1-AP (Melanophilin antibody at dilution of 1:200 (under 10x lens).



Immunohistochemical analysis of paraffin-embedded human skin cancer tissue slide using 10338-1-AP (Melanophilin antibody at dilution of 1:200 (under 40x lens).



Immunofluorescent analysis of (-20°C Ethanol) fixed HeLa cells using 10338-1-AP (Melanophilin antibody) at dilution of 1:50 and Alexa Fluor 488-conjugated AffiniPure Goat Anti-Rabbit IgG(H+L).



IP result of anti-Melanophilin (IP:10338-1-AP, 4ug; Detection:10338-1-AP 1:600) with A375 cells lysate 3600ug.