

For Research Use Only

DDX50 Polyclonal antibody

Catalog Number: 10358-1-AP

Featured Product

3 Publications



Basic Information

Catalog Number:

10358-1-AP

Size:

150ul, Concentration: 600 µg/ml by Nanodrop and 267 µg/ml by Bradford method using BSA as the standard;

Source:

Rabbit

Isotype:

IgG

Immunogen Catalog Number:

AG0382

GenBank Accession Number:

BC000272

GeneID (NCBI):

79009

UNIPROT ID:

Q9BQ39

Full Name:

DEAD (Asp-Glu-Ala-Asp) box polypeptide 50

Calculated MW:

83 kDa

Observed MW:

83 kDa

Purification Method:

Antigen affinity purification

Recommended Dilutions:

WB 1:500-1:1000

IP 0.5-4.0 ug for 1.0-3.0 mg of total protein lysate

IF 1:200-1:800

Applications

Tested Applications:

WB, IP, IF, ELISA

Cited Applications:

WB

Species Specificity:

human

Cited Species:

human

Positive Controls:

WB : HeLa cells, Jurkat cells

IP : HeLa cells,

IF : HeLa cells,

Background Information

DEAD box proteins, characterized by the conserved motif Asp-Glu-Ala-Asp (DEAD), are putative RNA helicases. They are implicated in a number of cellular processes involving alteration of RNA secondary structure such as translation initiation, nuclear and mitochondrial splicing, and ribosome and spliceosome assembly. Based on their distribution patterns, some members of this DEAD box protein family are believed to be involved in embryogenesis, spermatogenesis, and cellular growth and division. DEAD box polypeptide 50 (DDX50, synonyms: GU2, GUB, MGC3199, RH-II/GuB) enzyme may be involved in ribosomal RNA synthesis or processing.

Notable Publications

Author	Pubmed ID	Journal	Application
Li Wang	29503206	Cell Chem Biol	WB
Peijun Han	28181036	Arch Virol	WB
Fardin Aryan	37979585	Mol Cell	WB

Storage

Storage:

Store at -20°C. Stable for one year after shipment.

Storage Buffer:

PBS with 0.02% sodium azide and 50% glycerol pH 7.3.

Aliquoting is unnecessary for -20°C storage

*** 20ul sizes contain 0.1% BSA

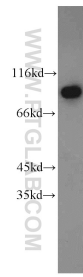
For technical support and original validation data for this product please contact:

T: 1 (888) 4PTGLAB (1-888-478-4522) (toll free in USA), or 1(312) 455-8498 (outside USA)

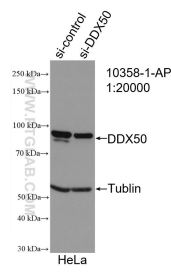
E: proteintech@ptglab.com
W: ptglab.com

This product is exclusively available under Proteintech Group brand and is not available to purchase from any other manufacturer.

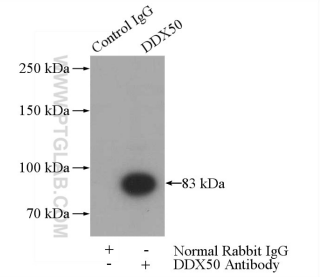
Selected Validation Data



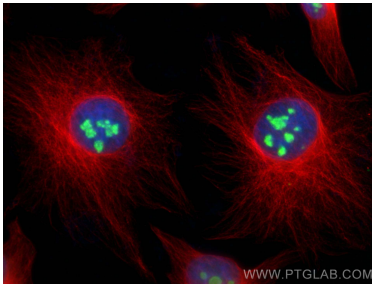
HeLa cells were subjected to SDS PAGE followed by western blot with 10358-1-AP (DDX50 antibody) at dilution of 1:800 incubated at room temperature for 1.5 hours.



WB result of DDX50 antibody (10358-1-AP; 1:20000; incubated at room temperature for 1.5 hours) with sh-Control and sh-DDX50 transfected HeLa cells.



IP result of anti-DDX50 (IP:10358-1-AP, 4ug; Detection:10358-1-AP 1:800) with HeLa cells lysate 1200ug.



Immunofluorescent analysis of (4% PFA) fixed HeLa cells using DDX50 antibody (10358-1-AP) at dilution of 1:400 and CoralLite®488-Conjugated AffiniPure Goat Anti-Rabbit IgG(H+L) (SA00013-2), Alpha Tubulin antibody (66031-1-Ig, Clone: 1E4C11, red).