

For Research Use Only

HBS1L Polyclonal antibody, PBS Only

Catalog Number:10359-1-PBS

Featured Product



Basic Information

Catalog Number:

10359-1-PBS

Size:

100ug , Concentration: 1 mg/ml by Nanodrop;

Source:

Rabbit

Isotype:

IgG

Immunogen Catalog Number:

AG0388

GenBank Accession Number:

BC001465

GeneID (NCBI):

10767

UNIPROT ID:

Q9Y450

Full Name:

HBS1-like (*S. cerevisiae*)

Calculated MW:

75 kDa

Observed MW:

75 kDa

Purification Method:

Antigen affinity purification

Applications

Tested Applications:

WB, IHC, IF/ICC, IP, Indirect ELISA

Species Specificity:

human, mouse

Background Information

HBS1L (HBS1-like), also known as EF-1a or ERFS, is a 684 amino acid protein that belongs to the GTP-binding elongation factor family and exists as multiple alternatively spliced isoforms. Expressed in kidney, brain, heart, placenta, liver, muscle and pancreas, HSB1L is thought to play a role in controlling fetal hemoglobin levels, specifically influencing platelet, monocyte and erythrocyte hemoglobin content. The gene encoding HBS1L maps to a locus on human chromosome 6 that is associated with sickle cell anemia and beta-thalassemia, suggesting a role for HBS1L in the pathogenesis of blood disorders. This antibody specifically recognizes the 75kd human HBS1L protein.

Storage

Storage:

Store at -80°C.

Storage Buffer:

PBS Only

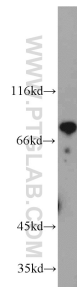
For technical support and original validation data for this product please contact:

T: 1 (888) 4PTGLAB (1-888-478-4522) (toll free in USA), or 1(312) 455-8498 (outside USA)

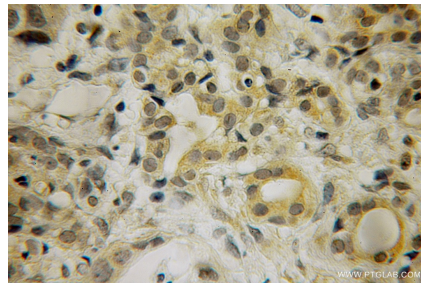
E: proteintech@ptglab.com
W: ptglab.com

This product is exclusively available under Proteintech Group brand and is not available to purchase from any other manufacturer.

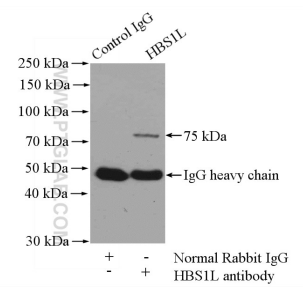
Selected Validation Data



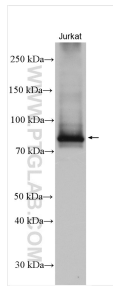
Jurkat cells were subjected to SDS PAGE followed by western blot with 10359-1-AP (HBS1L antibody) at dilution of 1:2000 incubated at room temperature for 1.5 hours. This data was developed using the same antibody clone with 10359-1-PBS in a different storage buffer formulation.



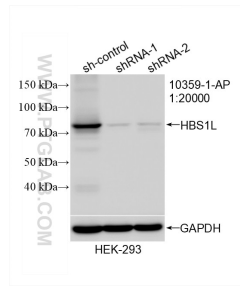
Immunohistochemical analysis of paraffin-embedded human pancreas cancer using 10359-1-AP (HBS1L antibody) at dilution of 1:50 (under 25x lens). This data was developed using the same antibody clone with 10359-1-PBS in a different storage buffer formulation.



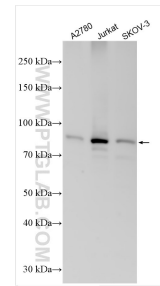
IP result of anti-HBS1L (IP:10359-1-AP, 4ug; Detection:10359-1-AP 1:1000) with mouse brain tissue lysate 4000ug. This data was developed using the same antibody clone with 10359-1-PBS in a different storage buffer formulation.



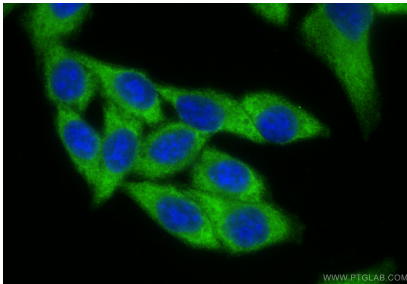
Jurkat cells were subjected to SDS PAGE followed by western blot with 10359-1-AP (HBS1L antibody) at dilution of 1:10000 incubated at room temperature for 1.5 hours. This data was developed using the same antibody clone with 10359-1-PBS in a different storage buffer formulation.



WB result of HBS1L antibody (10359-1-AP; 1:20000; incubated at room temperature for 1.5 hours) with sh-Control and sh-HBS1L transfected HEK-293 cells. This data was developed using the same antibody clone with 10359-1-PBS in a different storage buffer formulation.



Various lysates were subjected to SDS PAGE followed by western blot with 10359-1-AP (HBS1L antibody) at dilution of 1:8000 incubated at room temperature for 1.5 hours. This data was developed using the same antibody clone with 10359-1-PBS in a different storage buffer formulation.



Immunofluorescent analysis of (-20°C Ethanol) fixed HepG2 cells using HBS1L antibody (10359-1-AP) at dilution of 1:400 and CoraLite® 488-Conjugated Goat Anti-Rabbit IgG(H+L) (SA00013-2). This data was developed using the same antibody clone with 10359-1-PBS in a different storage buffer formulation.