

For Research Use Only

MAPRE2 Polyclonal antibody

Catalog Number: 10364-1-AP

Featured Product

2 Publications



Basic Information

Catalog Number:

10364-1-AP

Size:

150ul, Concentration: 300 ug/ml by Nanodrop and 250 ug/ml by Bradford method using BSA as the standard;

Source:

Rabbit

Isotype:

IgG

Immunogen Catalog Number:

AG0416

GenBank Accession Number:

BC007318

GeneID (NCBI):

10982

UNIPROT ID:

Q15555

Full Name:

microtubule-associated protein, RP/EB family, member 2

Calculated MW:

37 kDa

Observed MW:

39-42 kDa

Purification Method:

Antigen affinity purification

Recommended Dilutions:

WB 1:500-1:2000

IHC 1:50-1:500

IF/ICC 1:50-1:500

Applications

Tested Applications:

WB, IHC, IF/ICC, ELISA

Cited Applications:

WB

Species Specificity:

human, mouse

Cited Species:

mouse

Note-IHC: suggested antigen retrieval with TE buffer pH 9.0; (*) Alternatively, antigen retrieval may be performed with citrate buffer pH 6.0

Positive Controls:

WB : K-562 cells, Jurkat cells

IHC : human stomach tissue,

IF/ICC : mouse cells,

Background Information

RP1 protein shares significant homology to the adenomatous polyposis coli (APC) protein-binding EB1 gene family and binds specifically to the C-terminal region of the APC protein. RP1 also binds directly to tubulin, both in vitro and in vivo. The function of RP1 is currently unknown; however, its homology suggests involvement in tumorigenesis of colorectal cancers and proliferative control of normal cells. It may belong to the intermediate/early gene family, involved in the signal transduction cascade downstream of the TCR.

Notable Publications

Author	Pubmed ID	Journal	Application
Odetta Antico	34767452	Sci Adv	WB
Yuan-Yuan Li	35398309	Exp Cell Res	WB

Storage

Storage:

Store at -20°C. Stable for one year after shipment.

Storage Buffer:

PBS with 0.02% sodium azide and 50% glycerol pH 7.3.

Aliquoting is unnecessary for -20°C storage

*** 20ul sizes contain 0.1% BSA

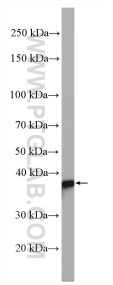
For technical support and original validation data for this product please contact:

T: 1 (888) 4PTGLAB (1-888-478-4522) (toll free in USA), or 1(312) 455-8498 (outside USA)

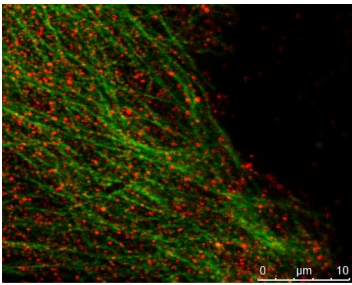
E: proteintech@ptglab.com
W: ptglab.com

This product is exclusively available under Proteintech Group brand and is not available to purchase from any other manufacturer.

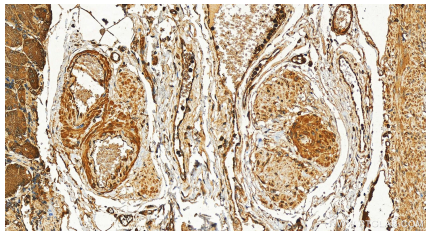
Selected Validation Data



K-562 cells were subjected to SDS PAGE followed by western blot with 10364-1-AP (MAPRE2 antibody) at dilution of 1:1000 incubated at room temperature for 1.5 hours.



Mouse keratinocyte showing MAPRE2 (#10364-1-AP, 1:100 dilution, with Alexa 594 labelled 2nd Ab) in red and alpha-tubulin (#66031-1-Ig, 1:100 dilution, with Alexa 488 labelled 2nd Ab) in green.



Immunohistochemical analysis of paraffin-embedded human stomach tissue slide using 10364-1-AP (MAPRE2 antibody) at dilution of 1:200 (under 20x lens). Heat mediated antigen retrieval with Tris-EDTA buffer (pH 9.0).