

For Research Use Only

ALDH7A1 Polyclonal antibody

Catalog Number: 10368-1-AP

Featured Product

7 Publications



Basic Information

Catalog Number: 10368-1-AP	GenBank Accession Number: BC002515	Purification Method: Antigen affinity purification
Size: 150ul , Concentration: 500 µg/ml by Nanodrop and 333 µg/ml by Bradford method using BSA as the standard;	GeneID (NCBI): 501	Recommended Dilutions: WB 1:500-1:3000 IHC 1:250-1:1000
Source: Rabbit	Full Name: aldehyde dehydrogenase 7 family, member A1	
Isotype: IgG	Calculated MW: 55 kDa	
Immunogen Catalog Number: AG0383	Observed MW: 55 kDa	

Applications

Tested Applications:

IHC, WB, ELISA

Cited Applications:

IF, IHC, WB

Species Specificity:

human, mouse, rat

Cited Species:

human, mouse, rat

Note-IHC: suggested antigen retrieval with TE buffer pH 9.0; (*) Alternatively, antigen retrieval may be performed with citrate buffer pH 6.0

Positive Controls:

WB : HepG2 cells, mouse kidney tissue, mouse liver tissue, HeLa cells

IHC : human ovary tumor tissue,

Background Information

ALDH7A1(Alpha-amino adipic semialdehyde dehydrogenase) is also named as ATQ1 and belongs to the aldehyde dehydrogenase family. It plays a major role in the detoxification of aldehydes generated by alcohol metabolism and lipid peroxidation. This protein has 4 isoforms produced by alternative splicing.

Notable Publications

Author	Pubmed ID	Journal	Application
Deshi Dong	25310017	Food Funct	WB
Xiaolei Zhang	36382280	Chem Sci	WB
Ya-Nan Song	28291813	PLoS One	WB

Storage

Storage:

Store at -20°C. Stable for one year after shipment.

Storage Buffer:

PBS with 0.02% sodium azide and 50% glycerol pH 7.3.

Aliquoting is unnecessary for -20°C storage

*** 20ul sizes contain 0.1% BSA

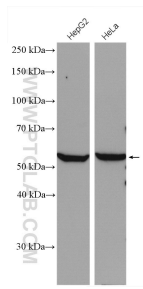
For technical support and original validation data for this product please contact:

T: 1 (888) 4PTGLAB (1-888-478-4522) (toll free in USA), or 1(312) 455-8498 (outside USA)

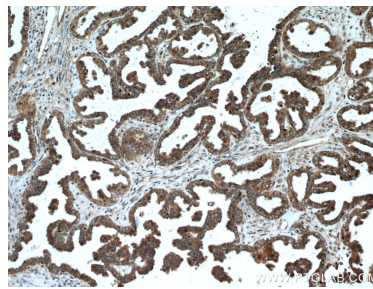
E: proteintech@ptglab.com
W: ptglab.com

This product is exclusively available under Proteintech Group brand and is not available to purchase from any other manufacturer.

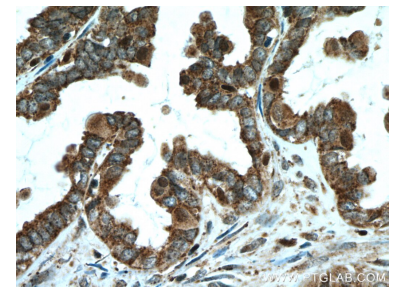
Selected Validation Data



Various lysates were subjected to SDS PAGE followed by western blot with 10368-1-AP (ALDH7A1 antibody) at dilution of 1:1500 incubated at room temperature for 1.5 hours.



Immunohistochemical analysis of paraffin-embedded human ovary tumor tissue slide using 10368-1-AP (ALDH7A1 antibody) at dilution of 1:500 (under 10x lens. Heat mediated antigen retrieval with Tris-EDTA buffer (pH 9.0).



Immunohistochemical analysis of paraffin-embedded human ovary tumor tissue slide using 10368-1-AP (ALDH7A1 antibody) at dilution of 1:500 (under 40x lens. Heat mediated antigen retrieval with Tris-EDTA buffer (pH 9.0).