

For Research Use Only

ANGPTL7 Polyclonal antibody

Catalog Number: 10396-1-AP

Featured Product

7 Publications



Basic Information

Catalog Number: 10396-1-AP	GenBank Accession Number: BC001881	Purification Method: Antigen affinity purification
Size: 150ul , Concentration: 450 µg/ml by Nanodrop;	GeneID (NCBI): 10218	Recommended Dilutions: WB 1:1000-1:6000 IHC 1:50-1:500 IF 1:50-1:500
Source: Rabbit	Full Name: angiopoietin-like 7	
Isotype: IgG	Calculated MW: 40 kDa	
Immunogen Catalog Number: AG0596	Observed MW: 45 kDa	

Applications

Tested Applications: IF, IHC, WB, ELISA	Positive Controls: WB : HepG2 cells, MCF-7 cells IHC : human liver cancer tissue, IF : THP-1 cells,
Cited Applications: IF, IHC, WB	
Species Specificity: human	
Cited Species: human, mouse	
Note-IHC: suggested antigen retrieval with TE buffer pH 9.0; (*) Alternatively, antigen retrieval may be performed with citrate buffer pH 6.0	

Background Information

ANGPTL7, also named as CDT6, is a member of the angiopoietin-like (ANGPTL) family of proteins, which are important regulators of Angiogenesis. It is a secreted 45-kDa glycoprotein that folds into a homotetramer structure linked by disulfide bonds. ANGPTL7 was originally discovered in the stromal layer of the corne, and moderately expressed in the human trabecular meshwork. The chromosomal location of the ANGPTL7 gene (1p36.22) is within the GLC3B locus (1p36.2-1p36.1) of primary congenital glaucoma, supporting ANGPTL7 as a candidate glaucoma gene. ANGPTL7 could have a pathogenic role in glaucoma, and may serve as a potential therapeutic target.

Notable Publications

Author	Pubmed ID	Journal	Application
T Ootake	34500105	Osteoarthritis Cartilage	IF
Kavita Praveen	36192519	Commun Biol	WB
Hongpan Zhang	33869274	Front Mol Biosci	IHC

Storage

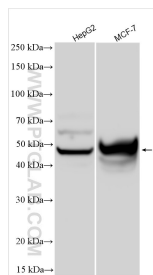
Storage:
Store at -20°C. Stable for one year after shipment.
Storage Buffer:
PBS with 0.02% sodium azide and 50% glycerol pH 7.3.
Aliquoting is unnecessary for -20°C storage

*** 20ul sizes contain 0.1% BSA

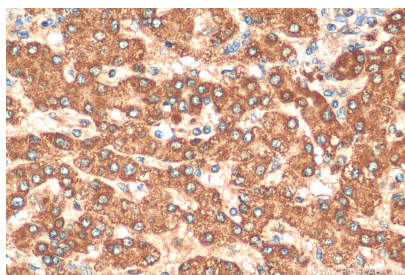
For technical support and original validation data for this product please contact:
T: 1 (888) 4PTGLAB (1-888-478-4522) (toll free in USA), or 1(312) 455-8498 (outside USA)
E: proteintech@ptglab.com
W: ptglab.com

This product is exclusively available under Proteintech Group brand and is not available to purchase from any other manufacturer.

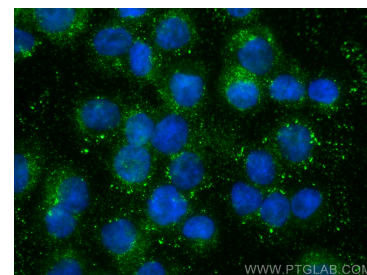
Selected Validation Data



Various lysates were subjected to SDS PAGE followed by western blot with 10396-1-AP (ANGPTL7 antibody) at dilution of 1:3000 incubated at room temperature for 1.5 hours.



Immunohistochemical analysis of paraffin-embedded human liver cancer tissue slide using 10396-1-AP (ANGPTL7 antibody) at dilution of 1:200 (under 10x lens). Heat mediated antigen retrieval with Tris-EDTA buffer (pH 9.0).



Immunofluorescent analysis of (4% PFA) fixed THP-1 cells using ANGPTL7 antibody (10396-1-AP) at dilution of 1:200 and CoraLite®488-Conjugated AffiniPure Goat Anti-Rabbit IgG(H+L).