

For Research Use Only

TRAIL Polyclonal antibody

Catalog Number: 10399-1-AP **1 Publications**



Basic Information

Catalog Number: 10399-1-AP	GenBank Accession Number: BC032722	Purification Method: Antigen affinity purification
Size: 150ul , Concentration: 220 µg/ml by Bradford method using BSA as the standard;	GeneID (NCBI): 8743	Recommended Dilutions: WB 1:300-1:600
Source: Rabbit	Full Name: tumor necrosis factor (ligand) superfamily, member 10	
Isotype: IgG	Calculated MW: 281 aa, 33 kDa	
Immunogen Catalog Number: AG0627		

Applications

Tested Applications: WB,ELISA	Positive Controls: WB : K-562 cells,
Cited Applications: WB	
Species Specificity: human	
Cited Species: human	

Background Information

TRAIL is a 30 kD protein known as TNF-related apoptosis inducing ligand, CD253, TNFSF10, or Apo-2L. It is expressed as two kinds of forms: cell surface protein (30 kD) and soluble ligand (19-20 kD) produced by megakaryocytes and platelets, monocytes, neutrophils, NK cells and activated T cells. This antigen is also expressed on tumor cells and transformed cell lines. TRAIL has been reported to induce apoptosis in tumor and transformed cell lines by a caspase-dependent process.

Notable Publications

Author	Pubmed ID	Journal	Application
Hui Li	30384810	Technol Cancer Res Treat	WB

Storage

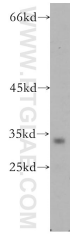
Storage:
Store at -20°C. Stable for one year after shipment.
Storage Buffer:
PBS with 0.02% sodium azide and 50% glycerol pH 7.3.
Aliquoting is unnecessary for -20°C storage

*** 20ul sizes contain 0.1% BSA

For technical support and original validation data for this product please contact:
T: 1 (888) 4PTGLAB (1-888-478-4522) (toll free in USA), or 1(312) 455-8498 (outside USA)
E: proteintech@ptglab.com
W: ptglab.com

This product is exclusively available under Proteintech Group brand and is not available to purchase from any other manufacturer.

Selected Validation Data



K-562 cells were subjected to SDS PAGE followed by western blot with 10399-1-AP (TRAIL antibody) at dilution of 1:300 incubated at room temperature for 1.5 hours.