

For Research Use Only

# CARD14 Polyclonal antibody

Catalog Number: 10400-1-AP

4 Publications



## Basic Information

Catalog Number:

10400-1-AP

Size:

150ul, Concentration: 287 µg/ml by Nanodrop and 1333 µg/ml by Bradford method using BSA as the standard;

Source:

Rabbit

Isotype:

IgG

Immunogen Catalog Number:

AG0628

GenBank Accession Number:

BC018142

GeneID (NCBI):

79092

UNIPROT ID:

Q9BXL6

Full Name:

caspase recruitment domain family, member 14

Calculated MW:

113 kDa

Observed MW:

113-140 kDa

Purification Method:

Antigen affinity purification

Recommended Dilutions:

WB 1:500-1:1000

## Applications

Tested Applications:

WB, ELISA

Cited Applications:

WB

Species Specificity:

human, mouse, rat

Cited Species:

human, mouse

Positive Controls:

WB : HeLa cells,

## Background Information

CARD14/CARMA2 is a novel caspase recruitment domain-containing protein 14 and is also a membrane-associated guanylate kinase (MAGUK) family member. CARD domain is a protein-binding element that mediates the assembly of CARD-containing proteins into apoptosis and NF-kappaB signaling complexes, which has been implicated in inflammatory disorders. CARD14 activates NF-kappaB signaling via interaction with BCL10. Defects in CARD14 are the cause of susceptibility to psoriasis type 2 (PSORS2), which is a common inflammatory disorder of the skin and other organs caused by abnormal keratinocyte proliferation and infiltration of inflammatory cells into the dermis and epidermis.

## Notable Publications

Author	Pubmed ID	Journal	Application
Domien Vanneste	36009554	Biomedicines	WB
J Randall McAuley	31420608	Oncogene	WB
Elien Van Nuffel	32343482	EMBO Rep	WB

## Storage

Storage:

Store at -20°C. Stable for one year after shipment.

Storage Buffer:

PBS with 0.02% sodium azide and 50% glycerol pH 7.3.

Aliquoting is unnecessary for -20°C storage

\*\*\* 20ul sizes contain 0.1% BSA

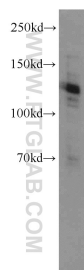
For technical support and original validation data for this product please contact:

T: 1 (888) 4PTGLAB (1-888-478-4522) (toll free in USA), or 1(312) 455-8498 (outside USA)

E: [proteintech@ptglab.com](mailto:proteintech@ptglab.com)  
W: [ptglab.com](http://ptglab.com)

This product is exclusively available under Proteintech Group brand and is not available to purchase from any other manufacturer.

## Selected Validation Data



HeLa cells were subjected to SDS PAGE followed by western blot with 10400-1-AP (CARD14 antibody) at dilution of 1:500 incubated at room temperature for 1.5 hours.