

For Research Use Only

# YY1AP1 Polyclonal antibody

Catalog Number: 10425-1-AP **3 Publications**



## Basic Information

<b>Catalog Number:</b> 10425-1-AP	<b>GenBank Accession Number:</b> BC003500	<b>Purification Method:</b> Antigen affinity purification
<b>Size:</b> 150ul , Concentration: 350 µg/ml by Nanodrop and 150 µg/ml by Bradford method using BSA as the standard;	<b>GeneID (NCBI):</b> 55249	<b>Recommended Dilutions:</b> WB 1:500-1:1000 IF 1:10-1:100
<b>Source:</b> Rabbit	<b>UNIPROT ID:</b> Q9H869	
<b>Isotype:</b> IgG	<b>Full Name:</b> YY1 associated protein 1	
<b>Immunogen Catalog Number:</b> AG0692	<b>Calculated MW:</b> 75 kDa	
	<b>Observed MW:</b> 75 kDa and 50 kDa	

## Applications

<b>Tested Applications:</b> IF, WB, ELISA	<b>Positive Controls:</b> WB : MDA-MB-231 cells, IF : HepG2 cells,
<b>Cited Applications:</b> WB,IF	
<b>Species Specificity:</b> human, mouse	
<b>Cited Species:</b> human, mouse	

## Background Information

YY1AP1 (YY1 associated protein 1), also known as HCCA2 (hepatocellular carcinoma-associated protein 2) or YY1AP, is a 796 amino acid protein that localizes to both the nucleus and the cytoplasm and exists as seven alternatively spliced isoforms. We detected 75 kDa and 50 kDa two isoforms. YY1AP1 is expressed ubiquitously with notable expression in lung, brain, spleen, pancreas, small intestine, heart, colon and skeletal muscle, YY1AP1 interacts with and enhances the transcriptional activation activity of YY1. YY1AP1 is expressed at high levels in liver carcinomas, suggesting a role in tumor transformation and metastasis. YY1AP1 may play a role in cell cycle regulation.

## Notable Publications

Author	Pubmed ID	Journal	Application
Jing Huang	33110216	Cell Death Differ	WB,IF
Zhongyu Ren	38052413	Eur J Pharmacol	WB
Emily Schoenhofen Sharp	20230128	Psychol Aging	WB,IF

## Storage

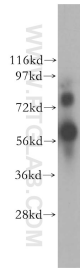
**Storage:**  
Store at -20°C. Stable for one year after shipment.  
**Storage Buffer:**  
PBS with 0.02% sodium azide and 50% glycerol pH 7.3.  
Aliquoting is unnecessary for -20°C storage

\*\*\* 20ul sizes contain 0.1% BSA

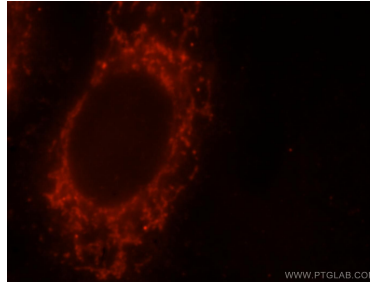
For technical support and original validation data for this product please contact:  
T: 1 (888) 4PTGLAB (1-888-478-4522) (toll free in USA), or 1(312) 455-8498 (outside USA)  
E: proteintech@ptglab.com  
W: ptglab.com

This product is exclusively available under Proteintech Group brand and is not available to purchase from any other manufacturer.

## Selected Validation Data



MDA-MB-231 cells were subjected to SDS PAGE followed by western blot with 10425-1-AP (YY1AP1 antibody) at dilution of 1:800 incubated at room temperature for 1.5 hours.



Immunofluorescent analysis of HepG2 cells, using YY1AP1 antibody 10425-1-AP at 1:25 dilution and Rhodamine-labeled goat anti-rabbit IgG (red).