

For Research Use Only

Smac/DIABLO Polyclonal antibody, PBS Only



Catalog Number: 10434-1-PBS

Featured Product

Basic Information

Catalog Number: 10434-1-PBS	GenBank Accession Number: BC011909	Purification Method: Antigen affinity purification
Size: 100ug , Concentration: 1 mg/ml by Nanodrop;	GeneID (NCBI): 56616	
Source: Rabbit	UNIPROT ID: Q9NR28	
Isotype: IgG	Full Name: diablo homolog (Drosophila)	
Immunogen Catalog Number: AG0696	Calculated MW: 27 kDa	
	Observed MW: 20 kDa	

Applications

Tested Applications:
WB, IHC, IF/ICC, FC (Intra), IP, Indirect ELISA

Species Specificity:
human, mouse, rat

Background Information

Smac/DIABLO is a mitochondrial protein that promotes apoptosis by neutralizing members of the IAP family. SMAC/DIABLO is ubiquitously expressed in normal tissues, and the expression of SMAC messenger RNA (mRNA) in adult testis is the highest. Smac/DIABLO encodes a 239 amino acid protein (~27 kDa). The first 55 amino acids are a mitochondrial targeting signal peptide that is cleaved to generate mature Smac-DIABLO (~21 kDa). When released from mitochondria, Smac-DIABLO acts as a natural antagonist of inhibitor of apoptosis proteins (IAPs). Smac-DIABLO antagonistic activity is based on its N-terminal tetrapeptide (AVPI) that binds baculoviral IAP repeat (BIR) domains of IAPs, releasing their inhibitory effects on both initiator and effector caspases, thus promoting cell death. (PMID: 32325691, PMID: 32575872, PMID: 25650938)

Storage

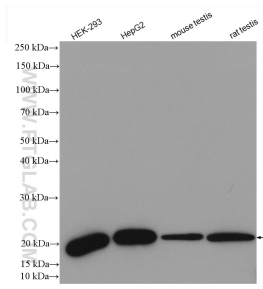
Storage:
Store at -80°C.

Storage Buffer:
PBS Only

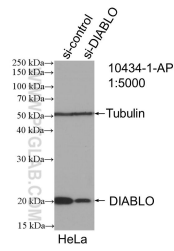
For technical support and original validation data for this product please contact:
T: 1 (888) 4PTGLAB (1-888-478-4522) (toll free in USA), or 1(312) 455-8498 (outside USA) E: proteintech@ptglab.com
W: ptglab.com

This product is exclusively available under Proteintech Group brand and is not available to purchase from any other manufacturer.

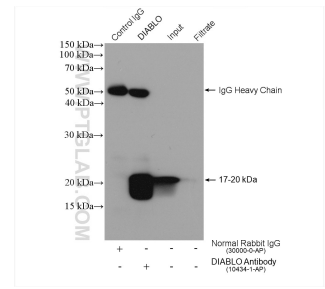
Selected Validation Data



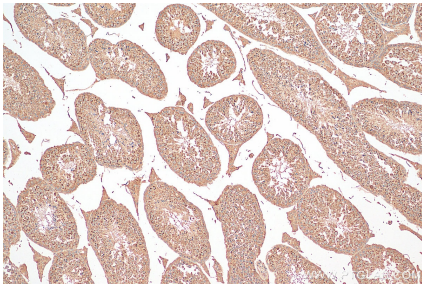
Various lysates were subjected to SDS PAGE followed by western blot with 10434-1-AP (DIABLO antibody) at dilution of 1:8000 incubated at room temperature for 1.5 hours. This data was developed using the same antibody clone with 10434-1-PBS in a different storage buffer formulation.



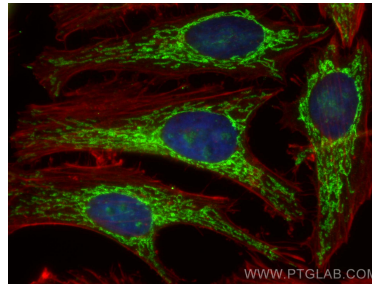
WB result of DIABLO antibody (10434-1-AP; 1:5000; incubated at room temperature for 1.5 hours) with sh-Control and sh-DIABLO transfected HeLa cells. This data was developed using the same antibody clone with 10434-1-PBS in a different storage buffer formulation.



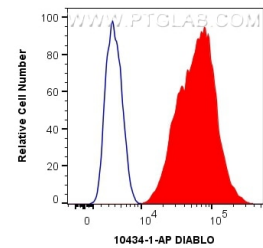
IP result of anti-DIABLO (IP:10434-1-AP, 4ug; Detection:10434-1-AP 1:2000) with HepG2 cells lysate 880 ug. This data was developed using the same antibody clone with 10434-1-PBS in a different storage buffer formulation.



Immunohistochemical analysis of paraffin-embedded mouse testis tissue slide using 10434-1-AP (DIABLO antibody) at dilution of 1:200 (under 10x lens). Heat mediated antigen retrieval with Tris-EDTA buffer (pH 9.0). This data was developed using the same antibody clone with 10434-1-PBS in a different storage buffer formulation.



Immunofluorescent analysis of (4% PFA) fixed HeLa cells using DIABLO antibody (10434-1-AP) at dilution of 1:200 and CoraLite®488-Conjugated AffiniPure Goat Anti-Rabbit IgG(H+L), CL594-Phalloidin (red). This data was developed using the same antibody clone with 10434-1-PBS in a different storage buffer formulation.



1×10^6 HeLa cells were intracellularly stained with 0.4 ug Anti-Human DIABLO (10434-1-AP) and CoraLite®488-Conjugated AffiniPure Goat Anti-Rabbit IgG(H+L) at dilution 1:1000 (red), or 0.4 ug Isotype Control. Cells were fixed with 4% PFA and permeabilized with Flow Cytometry Perm Buffer (PF00011-C). This data was developed using the same antibody clone with 10434-1-PBS in a different storage buffer formulation.