

For Research Use Only

EIF3J Polyclonal antibody, PBS Only

Catalog Number:10439-1-PBS

Featured Product



Basic Information

Catalog Number:

10439-1-PBS

Size:

100ug , Concentration: 1 mg/ml by Nanodrop;

Source:

Rabbit

Isotype:

IgG

Immunogen Catalog Number:

AG0678

GenBank Accession Number:

BC002719

GeneID (NCBI):

8669

UNIPROT ID:

O75822

Full Name:

eukaryotic translation initiation factor 3, subunit J

Calculated MW:

28 kDa

Observed MW:

35 kDa

Purification Method:

Antigen affinity purification

Applications

Tested Applications:

WB, IHC, IF/ICC, IP, Indirect ELISA

Species Specificity:

human

Background Information

EIF3 has a key role in binding of initiator methionyl-tRNA and mRNA to the 40S ribosomal subunit to form the 40S initiation complex(PMID:17588516). The eIF3 complex stimulates several steps in the translation initiation pathway, including dissociation of 80S ribosomes into 40S and 60S subunits, binding of a ternary complex (TC) consisting of Met-tRNA , eIF2, and GTP to the small subunit (forming the 43S preinitiation complex) and recruitment of mRNA to the 43 S complex to produce the 48S complex (PMID:11560931) EIF3J was identified as a high copy suppressor of the temperature-sensitive (Ts-) phenotype of the rpg1-1 allele of TIF32/RPG1, encoding the largest subunit of yeast eIF3 (eIF3a) (PMID:10488093).

Storage

Storage:

Store at -80°C.

Storage Buffer:

PBS Only

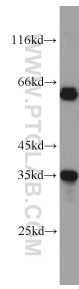
For technical support and original validation data for this product please contact:

T: 1 (888) 4PTGLAB (1-888-478-4522) (toll free in USA), or 1(312) 455-8498 (outside USA)

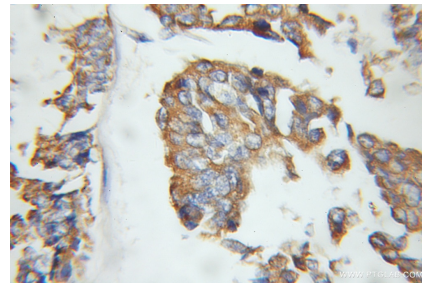
E: proteintech@ptglab.com
W: ptglab.com

This product is exclusively available under Proteintech Group brand and is not available to purchase from any other manufacturer.

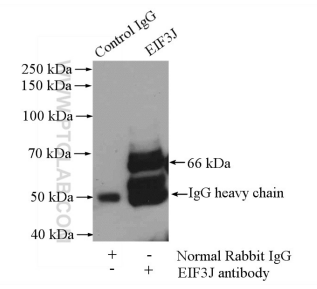
Selected Validation Data



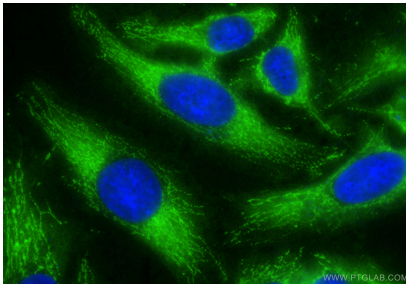
HeLa cells were subjected to SDS PAGE followed by western blot with 10439-1-AP (EIF3J antibody) at dilution of 1:500 incubated at room temperature for 1.5 hours. This data was developed using the same antibody clone with 10439-1-PBS in a different storage buffer formulation.



Immunohistochemical analysis of paraffin-embedded human breast cancer using 10439-1-AP (EIF3J antibody) at dilution of 1:100 (under 10x lens). This data was developed using the same antibody clone with 10439-1-PBS in a different storage buffer formulation.



IP result of anti-EIF3J (IP:10439-1-AP, 4ug; Detection:10439-1-AP 1:500) with HeLa cells lysate 880ug. This data was developed using the same antibody clone with 10439-1-PBS in a different storage buffer formulation.



Immunofluorescent analysis of (-20°C Ethanol) fixed HeLa cells using EIF3J antibody (10439-1-AP) at dilution of 1:400 and CoraLite®488-Conjugated Goat Anti-Rabbit IgG(H+L) (SA00013-2). This data was developed using the same antibody clone with 10439-1-PBS in a different storage buffer formulation.