

For Research Use Only

SLC43A1 Polyclonal antibody

Catalog Number: 10444-1-AP

1 Publications



Basic Information

Catalog Number:

10444-1-AP

Size:

150ul, Concentration: 750 ug/ml by Nanodrop and 343 ug/ml by Bradford method using BSA as the standard;

Source:

Rabbit

Isotype:

IgG

Immunogen Catalog Number:

AG0305

GenBank Accession Number:

BC001639

GeneID (NCBI):

8501

UNIPROT ID:

O75387

Full Name:

solute carrier family 43, member 1

Calculated MW:

61 kDa

Observed MW:

55-61 kDa

Purification Method:

Antigen affinity purification

Recommended Dilutions:

WB 1:500-1:1000

IHC 1:50-1:500

Applications

Tested Applications:

WB, IHC, ELISA

Cited Applications:

WB

Species Specificity:

human

Cited Species:

human

Positive Controls:

WB : PC-3 cells, Daudi cells

IHC : human kidney tissue,

Note-IHC: suggested antigen retrieval with TE buffer pH 9.0; (*) Alternatively, antigen retrieval may be performed with citrate buffer pH 6.0

Background Information

SLC43A1, also named as LAT3, PB39 and POV1, belongs to the system L family of plasma membrane carrier proteins that transports large neutral amino acids. It plays a role in the development of human prostate cancer, from prostatic intraepithelial neoplasia to invasive prostate cancer.

Notable Publications

Author	Pubmed ID	Journal	Application
Riho Kimura	39067558	Arch Biochem Biophys	WB

Storage

Storage:

Store at -20°C. Stable for one year after shipment.

Storage Buffer:

PBS with 0.02% sodium azide and 50% glycerol pH 7.3.

Aliquoting is unnecessary for -20°C storage

*** 20ul sizes contain 0.1% BSA

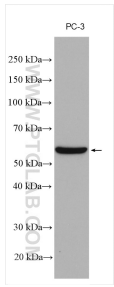
For technical support and original validation data for this product please contact:

T: 1 (888) 4PTGLAB (1-888-478-4522) (toll free in USA), or 1(312) 455-8498 (outside USA)

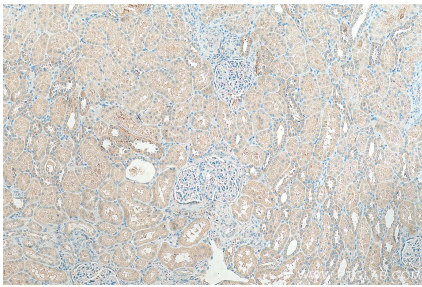
E: proteintech@ptglab.com
W: ptglab.com

This product is exclusively available under Proteintech Group brand and is not available to purchase from any other manufacturer.

Selected Validation Data



PC-3 cells were subjected to SDS PAGE followed by western blot with 10444-1-AP (SLC43A1 antibody) at dilution of 1:500 incubated at room temperature for 1.5 hours.



Immunohistochemical analysis of paraffin-embedded human kidney tissue slide using 10444-1-AP (SLC43A1 antibody) at dilution of 1:100 (under 10x lens). Heat mediated antigen retrieval with Tris-EDTA buffer (pH 9.0).



Various lysates were subjected to SDS PAGE followed by western blot with 10444-1-AP (SLC43A1 antibody) at dilution of 1:400 incubated at room temperature for 1.5 hours.