

For Research Use Only

CLTB Polyclonal antibody

Catalog Number: 10455-1-AP

Featured Product

4 Publications



Basic Information

Catalog Number:

10455-1-AP

Size:

150ul, Concentration: 1000 ug/ml by Nanodrop and 300 ug/ml by Bradford method using BSA as the standard;

Source:

Rabbit

Isotype:

IgG

Immunogen Catalog Number:

AG0707

GenBank Accession Number:

BC006457

GeneID (NCBI):

1212

UNIPROT ID:

P09497

Full Name:

clathrin, light chain (Lcb)

Calculated MW:

23 kDa

Observed MW:

32-38 kDa

Purification Method:

Antigen affinity purification

Recommended Dilutions:

WB 1:500-1:2000

IP 0.5-4.0 ug for 1.0-3.0 mg of total protein lysate

IHC 1:50-1:500

IF/ICC 1:50-1:500

Applications

Tested Applications:

WB, IHC, IF/ICC, IP, ELISA

Cited Applications:

WB, IF

Species Specificity:

human, mouse, rat

Cited Species:

human, mouse

Note-IHC: suggested antigen retrieval with TE buffer pH 9.0; (*) Alternatively, antigen retrieval may be performed with citrate buffer pH 6.0

Positive Controls:

WB : mouse thymus tissue, human brain tissue, mouse brain tissue, PC-3 cells

IP : mouse brain tissue,

IHC : human skin cancer tissue,

IF/ICC : HeLa cells, HEK-293 cells

Background Information

Clathrin is the major protein of the polyhedral coat of coated pits and vesicles which entrap specific macromolecules during receptor-mediated endocytosis. The clathrin molecule has a triskelion shape. Each clathrin triskelion is composed of three identical heavy chains (180 kDa) and three light chains of two types, LCA (CLTA) and LCB (CLTB) (30-40 kDa). The light chain subunits are thought to regulate the formation or disassembly of clathrin coats. (PMID: 2445759; 8374173; 3563513)

Notable Publications

Author	Pubmed ID	Journal	Application
Lisa Redlingshöfer	32907943	Proc Natl Acad Sci U S A	WB
Hongyun Liu	35862701	J Virol	WB
Shuang Wu	27540116	Proc Natl Acad Sci U S A	WB

Storage

Storage:

Store at -20°C. Stable for one year after shipment.

Storage Buffer:

PBS with 0.02% sodium azide and 50% glycerol pH 7.3.

Aliquoting is unnecessary for -20°C storage

*** 20ul sizes contain 0.1% BSA

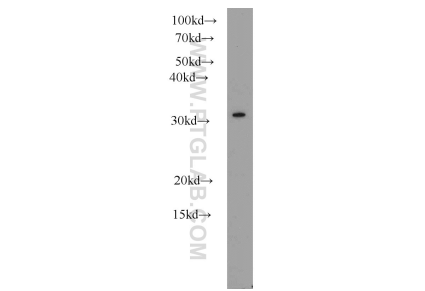
For technical support and original validation data for this product please contact:

T: 1 (888) 4PTGLAB (1-888-478-4522) (toll free in USA), or 1(312) 455-8498 (outside USA)

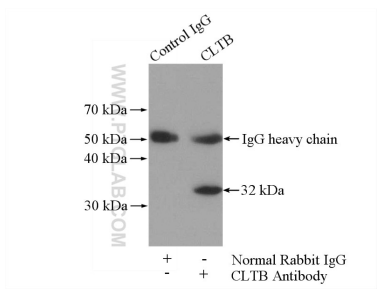
E: proteintech@ptglab.com
W: ptglab.com

This product is exclusively available under Proteintech Group brand and is not available to purchase from any other manufacturer.

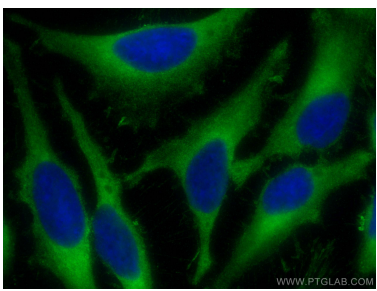
Selected Validation Data



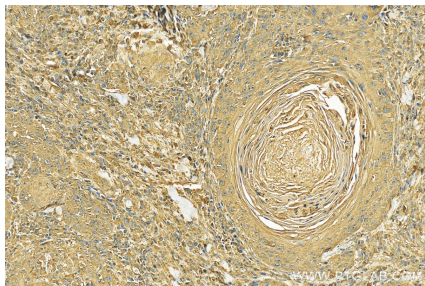
mouse thymus tissue were subjected to SDS PAGE followed by western blot with 10455-1-AP (CLTB antibody) at dilution of 1:1000 incubated at room temperature for 1.5 hours.



IP result of anti-CLTB (IP:10455-1-AP, 4ug; Detection:10455-1-AP 1:500) with mouse brain tissue lysate 4000ug.



Immunofluorescent analysis of (-20°C Methanol) fixed HeLa cells using CLTB antibody (10455-1-AP) at dilution of 1:200 and CoraLite@488-Conjugated AffiniPure Goat Anti-Rabbit IgG(H+L).



Immunohistochemical analysis of paraffin-embedded skin cancer slide using 10455-1-AP (CLTB antibody) at dilution of 1:200 (under 20x lens). Heat mediated antigen retrieval with Tris-EDTA buffer (pH 9.0).