

For Research Use Only

RAN Polyclonal antibody

Catalog Number: 10469-1-AP

Featured Product

12 Publications



Basic Information

Catalog Number:

10469-1-AP

Size:

150ul, Concentration: 600 µg/ml by Nanodrop and 340 µg/ml by Bradford method using BSA as the standard;

Source:

Rabbit

Isotype:

IgG

Immunogen Catalog Number:

AG0748

GenBank Accession Number:

BC004272

GeneID (NCBI):

5901

UNIPROT ID:

P62826

Full Name:

RAN, member RAS oncogene family

Calculated MW:

25 kDa

Observed MW:

24 kDa

Purification Method:

Antigen affinity purification

Recommended Dilutions:

WB 1:500-1:2000

IP 0.5-4.0 ug for 1.0-3.0 mg of total protein lysate

IHC 1:50-1:500

IF 1:50-1:500

Applications

Tested Applications:

IF, IHC, IP, WB, ELISA

Cited Applications:

IF, IHC, IP, WB

Species Specificity:

human, mouse, rat

Cited Species:

human, rat, mouse, Macrobrachium Rosenbergi

Note-IHC: suggested antigen retrieval with TE buffer pH 9.0; (*) Alternatively, antigen retrieval may be performed with citrate buffer pH 6.0

Positive Controls:

WB: HEK-293 cells, A375 cells, rat kidney tissue, NIH/3T3 cells, mouse kidney tissue, HeLa cells, Jurkat cells

IP: mouse kidney tissue,

IHC: human breast cancer tissue, human testis tissue, rat kidney tissue

IF: HeLa cells,

Notable Publications

Author	Pubmed ID	Journal	Application
Mingxiao Ning	28935600	Fish Shellfish Immunol	WB
Huaiping Cui	34601496	Cell Death Dis	WB
Tianyu Wu	36395215	Science	IF

Storage

Storage:

Store at -20°C. Stable for one year after shipment.

Storage Buffer:

PBS with 0.02% sodium azide and 50% glycerol pH 7.3.

Aliquoting is unnecessary for -20°C storage

*** 20ul sizes contain 0.1% BSA

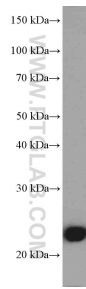
For technical support and original validation data for this product please contact:

T: 1 (888) 4PTGLAB (1-888-478-4522) (toll free in USA), or 1(312) 455-8498 (outside USA)

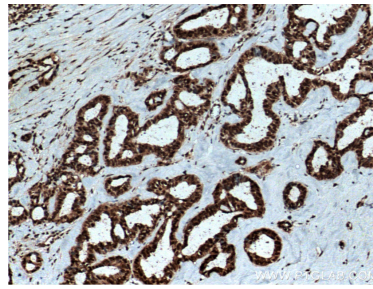
E: proteintech@ptglab.com
W: ptglab.com

This product is exclusively available under Proteintech Group brand and is not available to purchase from any other manufacturer.

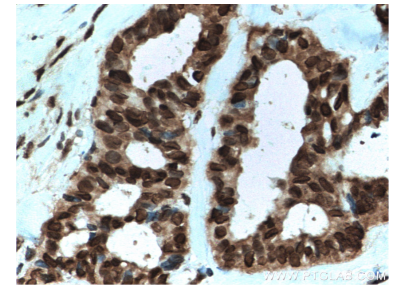
Selected Validation Data



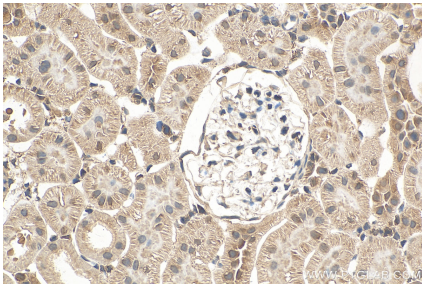
HEK-293 cells were subjected to SDS PAGE followed by western blot with 10469-1-AP (RAN Antibody) at dilution of 1:1000 incubated at room temperature for 1.5 hours.



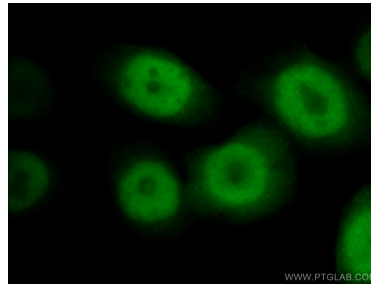
Immunohistochemical analysis of paraffin-embedded human breast cancer tissue slide using 10469-1-AP (RAN antibody) at dilution of 1:200 (under 10x lens. Heat mediated antigen retrieval with Tris-EDTA buffer (pH 9.0).



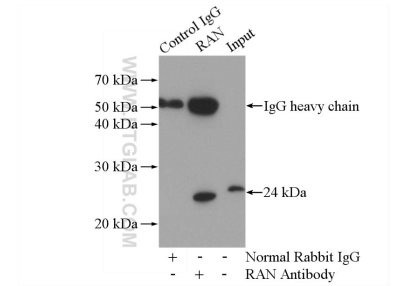
Immunohistochemical analysis of paraffin-embedded human breast cancer tissue slide using 10469-1-AP (RAN antibody) at dilution of 1:200 (under 40x lens. Heat mediated antigen retrieval with Tris-EDTA buffer (pH 9.0).



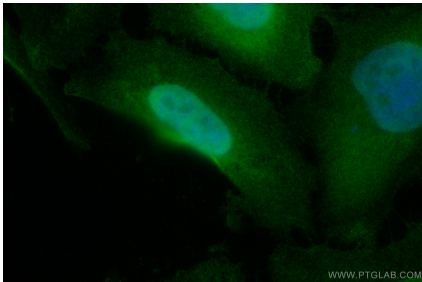
Immunohistochemical analysis of paraffin-embedded rat kidney tissue slide using 10469-1-AP (RAN antibody) at dilution of 1:400 (under 40x lens). Heat mediated antigen retrieval with Tris-EDTA buffer (pH 9.0).



Immunofluorescent analysis of (4% PFA) fixed HeLa cells using 10469-1-AP (RAN antibody) at dilution of 1:50 and Alexa Fluor 488-conjugated AffiniPure Goat Anti-Rabbit IgG(H+L).



IP result of anti-RAN (IP:10469-1-AP, 4ug; Detection:10469-1-AP 1:1000) with mouse kidney tissue lysate 4000ug.



Immunofluorescent analysis of (4% PFA) fixed HeLa cells using RAN antibody (10469-1-AP) at dilution of 1:200 and CoraLite®488-Conjugated AffiniPure Goat Anti-Rabbit IgG(H+L).