

For Research Use Only

CLINT1 Polyclonal antibody

Catalog Number: 10470-1-AP

2 Publications



Basic Information

Catalog Number:

10470-1-AP

Size:

150ul, Concentration: 600 ug/ml by Nanodrop and 347 ug/ml by Bradford method using BSA as the standard;

Source:

Rabbit

Isotype:

IgG

Immunogen Catalog Number:

AG0754

GenBank Accession Number:

BC004467

GeneID (NCBI):

9685

UNIPROT ID:

Q14677

Full Name:

clathrin interactor 1

Calculated MW:

68 kDa

Observed MW:

68 kDa, 80 kDa

Purification Method:

Antigen affinity purification

Recommended Dilutions:

WB 1:1000-1:4000

IP 0.5-4.0 ug for 1.0-3.0 mg of total protein lysate

IHC 1:50-1:500

IF/ICC 1:200-1:800

Applications

Tested Applications:

WB, IHC, IF/ICC, IP, ELISA

Cited Applications:

WB

Species Specificity:

human, mouse, rat

Cited Species:

human

Note-IHC: suggested antigen retrieval with TE buffer pH 9.0; (*) Alternatively, antigen retrieval may be performed with citrate buffer pH 6.0

Positive Controls:

WB : HepG2 cells, HEK-293 cells, HeLa cells, Jurkat cells, mouse brain tissue

IP : HeLa cells,

IHC : human breast cancer tissue,

IF/ICC : HepG2 cells,

Background Information

Clathrin interactor 1 (CLINT1), also known as enthoprotin or epsin-4, belongs to the epsin family of endocytic adapter proteins. CLINT1 interacts with clathrin, the adapter protein AP-1 and phosphoinositides. It may have a role in the formation of clathrin coated vesicles and trafficking between the trans-Golgi network and endosomes. Mutations in the gene of CLINT1 are associated with a susceptibility to schizophrenia and psychotic disorders. Calculated molecular weight of CLINT1 is 68 kDa. The migration of endogenous CLINT1 at 80 kDa has also been reported (PMID: 12213833; 15811338).

Notable Publications

Author	Pubmed ID	Journal	Application
Kerriann K Badal	38979384	bioRxiv	WB
Orhi Barroso-Gomila	37996419	Nat Commun	WB

Storage

Storage:

Store at -20°C. Stable for one year after shipment.

Storage Buffer:

PBS with 0.02% sodium azide and 50% glycerol pH 7.3.

Aliquoting is unnecessary for -20°C storage

*** 20ul sizes contain 0.1% BSA

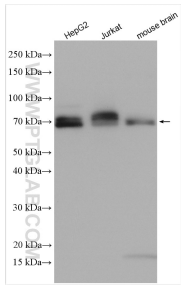
For technical support and original validation data for this product please contact:

T: 1 (888) 4PTGLAB (1-888-478-4522) (toll free in USA), or 1(312) 455-8498 (outside USA)

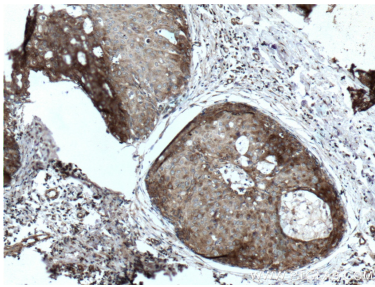
E: proteintech@ptglab.com
W: ptglab.com

This product is exclusively available under Proteintech Group brand and is not available to purchase from any other manufacturer.

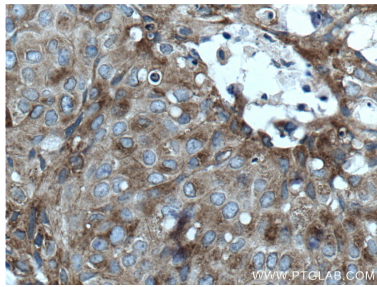
Selected Validation Data



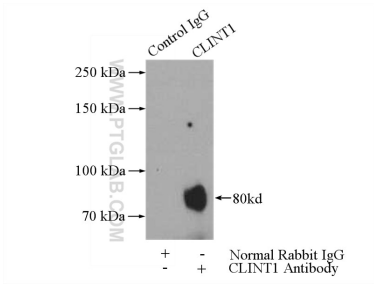
Various lysates were subjected to SDS PAGE followed by western blot with 10470-1-AP (CLINT1 antibody) at dilution of 1:2000 incubated at room temperature for 1.5 hours.



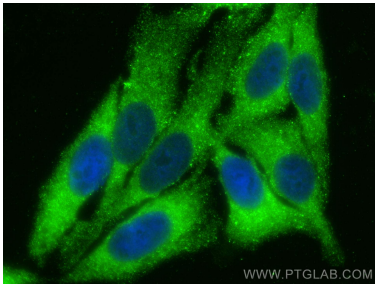
Immunohistochemical analysis of paraffin-embedded human breast cancer tissue slide using 10470-1-AP (CLINT1 Antibody) at dilution of 1:200 (under 10x lens). Heat mediated antigen retrieval with Tris-EDTA buffer (pH 9.0).



Immunohistochemical analysis of paraffin-embedded human breast cancer tissue slide using 10470-1-AP (CLINT1 Antibody) at dilution of 1:200 (under 40x lens). Heat mediated antigen retrieval with Tris-EDTA buffer (pH 9.0).



IP result of anti-CLINT1 (IP:10470-1-AP, 4ug; Detection:10470-1-AP 1:1000) with HeLa cells lysate 2800ug.



Immunofluorescent analysis of (-20°C Ethanol) fixed HepG2 cells using CLINT1 antibody (10470-1-AP) at dilution of 1:400 and Multi-rAb Coralite ® Plus 488-Goat Anti-Rabbit Recombinant Secondary Antibody (H+L) (RGAR002).