

For Research Use Only

CHMP2A Polyclonal antibody, PBS Only

Catalog Number: 10477-1-PBS

Featured Product



Basic Information

Catalog Number:

10477-1-PBS

Size:

100ug, Concentration: 1 mg/ml by Nanodrop;

Source:

Rabbit

Isotype:

IgG

Immunogen Catalog Number:

AG0719

GenBank Accession Number:

BC002502

GeneID (NCBI):

27243

UNIPROT ID:

O43633

Full Name:

chromatin modifying protein 2A

Calculated MW:

25 kDa

Observed MW:

32 kDa

Purification Method:

Antigen affinity purification

Applications

Tested Applications:

WB, IHC, Indirect ELISA

Species Specificity:

human

Background Information

CHMP2A, also known as Vps2-1, belongs to the chromatin-modifying protein/charged multivesicular body protein (CHMP) family. CHMP2A is a component of ESCRT-III (endosomal sorting complex required for transport III), a complex involved in the degradation of surface receptor proteins and the formation of endocytic multivesicular bodies (MVBs). It has been shown that CHMP2A can interact with and regulate the function of the AAA-ATPase VPS4B (PMID: 15173323). CHMP2A is also reported to be involved in HIV budding (PMID: 21396898; 23051622).

Storage

Storage:

Store at -80°C.

Storage Buffer:

PBS only, pH7.3

For technical support and original validation data for this product please contact:

T: 1 (888) 4PTGLAB (1-888-478-4522) (toll free in USA), or 1(312) 455-8498 (outside USA)

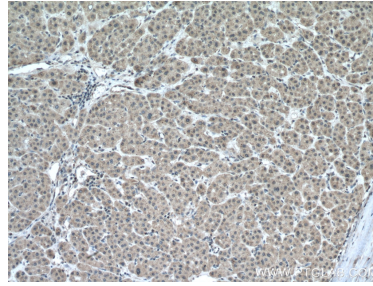
E: proteintech@ptglab.com
W: ptglab.com

This product is exclusively available under Proteintech Group brand and is not available to purchase from any other manufacturer.

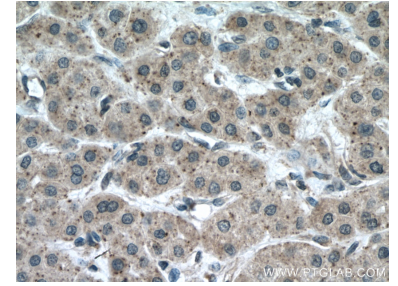
Selected Validation Data



Various lysates were subjected to SDS PAGE followed by western blot with 10477-1-AP (CHMP2A antibody) at dilution of 1:2500 incubated at room temperature for 1.5 hours. This data was developed using the same antibody clone with 10477-1-PBS in a different storage buffer formulation.



Immunohistochemical analysis of paraffin-embedded human liver cancer tissue slide using 10477-1-AP (CHMP2A antibody) at dilution of 1:200 (under 10x lens. Heat mediated antigen retrieval with Tris-EDTA buffer (pH 9.0). This data was developed using the same antibody clone with 10477-1-PBS in a different storage buffer formulation.



Immunohistochemical analysis of paraffin-embedded human liver cancer tissue slide using 10477-1-AP (CHMP2A antibody) at dilution of 1:200 (under 40x lens. Heat mediated antigen retrieval with Tris-EDTA buffer (pH 9.0). This data was developed using the same antibody clone with 10477-1-PBS in a different storage buffer formulation.