

For Research Use Only

# S100A14 Polyclonal antibody

Catalog Number: 10489-1-AP

Featured Product

25 Publications



## Basic Information

### Catalog Number:

10489-1-AP

### Size:

150ul, Concentration: 1000 µg/ml by Nanodrop and 500 µg/ml by Bradford method using BSA as the standard;

### Source:

Rabbit

### Isotype:

IgG

### Immunogen Catalog Number:

AG0757

### GenBank Accession Number:

BC005019

### GeneID (NCBI):

57402

### Full Name:

S100 calcium binding protein A14

### Calculated MW:

12 kDa

### Observed MW:

10-12 kDa

### Purification Method:

Antigen affinity purification

### Recommended Dilutions:

WB 1:500-1:2000

IP 0.5-4.0 µg for 1.0-3.0 mg of total

protein lysate

IHC 1:50-1:500

IF 1:200-1:800

## Applications

### Tested Applications:

IF, IHC, IP, WB, ELISA

### Cited Applications:

CoIP, IF, IHC, IP, WB

### Species Specificity:

human, rat

### Cited Species:

human, mouse

**Note-IHC: suggested antigen retrieval with TE buffer pH 9.0; (\*) Alternatively, antigen retrieval may be performed with citrate buffer pH 6.0**

### Positive Controls:

WB : MCF-7 cells, rat stomach tissue

IP : MCF-7 cells,

IHC : human breast cancer tissue, human colon cancer tissue, human gliomas tissue, human ovary tumor tissue, human skin tissue

IF : HeLa cells,

## Background Information

The S100 family is a multifunctional group of EF-hand type calcium-binding proteins. S100A14 protein (previously known as BCMP84, S100A15) is a recently identified member of the S100 family. It is differentially expressed in a number of different human malignancies like ovary, breast, uterus, kidney, rectum and colon cancers, and esophageal and oral squamous cell carcinomas (OSCCs).

## Notable Publications

Author	Pubmed ID	Journal	Application
Qingying Zhang	25266115	J Cancer Res Clin Oncol	WB, IHC
Sapkota Dipak D	24086685	PLoS One	WB, IHC, IP
Leth-Larsen Rikke R	22692575	Mol Med	IHC

## Storage

### Storage:

Store at -20°C. Stable for one year after shipment.

### Storage Buffer:

PBS with 0.02% sodium azide and 50% glycerol pH 7.3.

Aliquoting is unnecessary for -20°C storage

\*\*\* 20ul sizes contain 0.1% BSA

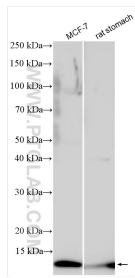
For technical support and original validation data for this product please contact:

T: 1 (888) 4PTGLAB (1-888-478-4522) (toll free in USA), or 1(312) 455-8498 (outside USA)

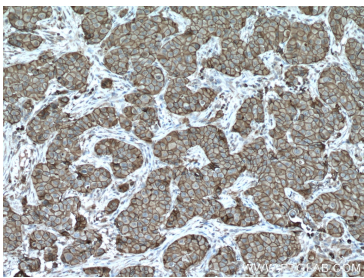
E: [proteintech@ptglab.com](mailto:proteintech@ptglab.com)  
W: [ptglab.com](http://ptglab.com)

This product is exclusively available under Proteintech Group brand and is not available to purchase from any other manufacturer.

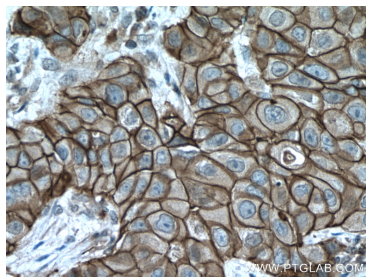
Selected Validation Data



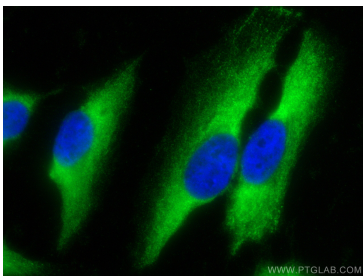
Various lysates were subjected to SDS PAGE followed by western blot with 10489-1-AP (S100A14 antibody) at dilution of 1:1000 incubated at room temperature for 1.5 hours.



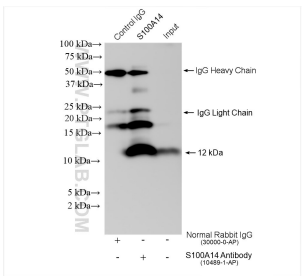
Immunohistochemical analysis of paraffin-embedded human breast cancer tissue slide using 10489-1-AP (S100A14 antibody) at dilution of 1:200 (under 10x lens. Heat mediated antigen retrieval with Tris-EDTA buffer (pH 9.0).



Immunohistochemical analysis of paraffin-embedded human breast cancer tissue slide using 10489-1-AP (S100A14 antibody) at dilution of 1:200 (under 40x lens. Heat mediated antigen retrieval with Tris-EDTA buffer (pH 9.0).



Immunofluorescent analysis of (-20°C Ethanol) fixed HeLa cells using S100A14 antibody (10489-1-AP) at dilution of 1:400 and CoraLite®488-Conjugated AffiniPure Goat Anti-Rabbit IgG(H+L).



IP result of anti-S100A14(IP:10489-1-AP, 4ug; Detection:10489-1-AP 1:1000) with MCF-7 cells lysate 760 ug.