

For Research Use Only

# SNCB Polyclonal antibody

Catalog Number: 10498-1-AP



## Basic Information

### Catalog Number:

10498-1-AP

### Size:

150ul, Concentration: 240 ug/ml by Nanodrop and 150 ug/ml by Bradford method using BSA as the standard;

### Source:

Rabbit

### Isotype:

IgG

### Immunogen Catalog Number:

AG0772

### GenBank Accession Number:

BC002902

### GeneID (NCBI):

6620

### UNIPROT ID:

Q16143

### Full Name:

synuclein, beta

### Calculated MW:

14 kDa

### Observed MW:

14-18 kDa

### Purification Method:

Antigen affinity purification

### Recommended Dilutions:

WB 1:500-1:1000

IP 0.5-4.0 ug for 1.0-3.0 mg of total protein lysate

IHC 1:10-1:100

IF/ICC 1:10-1:100

## Applications

### Tested Applications:

WB, IHC, IF/ICC, IP, ELISA

### Species Specificity:

human, mouse, rat

**Note-IHC: suggested antigen retrieval with TE buffer pH 9.0; (\*) Alternatively, antigen retrieval may be performed with citrate buffer pH 6.0**

### Positive Controls:

WB : mouse brain tissue, human brain tissue, rat brain tissue

IP : mouse brain tissue,

IHC : human breast cancer tissue,

IF/ICC : HepG2 cells,

## Storage

### Storage:

Store at -20°C. Stable for one year after shipment.

### Storage Buffer:

PBS with 0.02% sodium azide and 50% glycerol pH 7.3.

Aliquoting is unnecessary for -20°C storage

\*\*\* 20ul sizes contain 0.1% BSA

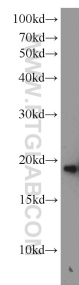
For technical support and original validation data for this product please contact:

T: 1 (888) 4PTGLAB (1-888-478-4522) (toll free in USA), or 1(312) 455-8498 (outside USA)

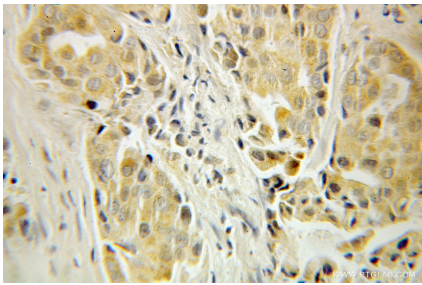
E: [proteintech@ptglab.com](mailto:proteintech@ptglab.com)  
W: [ptglab.com](http://ptglab.com)

This product is exclusively available under Proteintech Group brand and is not available to purchase from any other manufacturer.

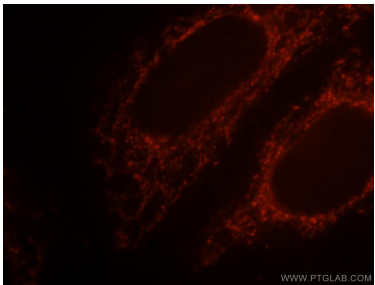
Selected Validation Data



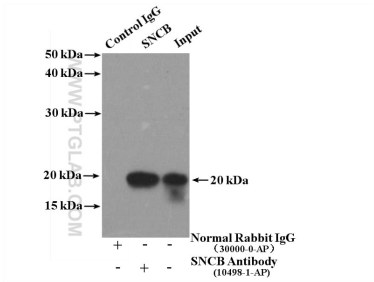
mouse brain tissue were subjected to SDS PAGE followed by western blot with 10498-1-AP (SNCB antibody) at dilution of 1:600 incubated at room temperature for 1.5 hours.



Immunohistochemical analysis of paraffin-embedded human breast cancer using 10498-1-AP (SNCB antibody) at dilution of 1:10 (under 10x lens).



Immunofluorescent analysis of HepG2 cells, using SNCB antibody 10498-1-AP at 1:25 dilution and Rhodamine-labeled goat anti-rabbit IgG (red).



IP result of anti-SNCB (IP:10498-1-AP, 4ug; Detection:10498-1-AP 1:500) with mouse brain tissue lysate 4000ug.