

For Research Use Only

# NCS1 Polyclonal antibody

Catalog Number: 10506-2-AP

Featured Product

2 Publications



## Basic Information

**Catalog Number:**

10506-2-AP

**Size:**

150ul, Concentration: 1000 µg/ml by Nanodrop and 500 µg/ml by Bradford method using BSA as the standard;

**Source:**

Rabbit

**Isotype:**

IgG

**Immunogen Catalog Number:**

AG0784

**GenBank Accession Number:**

BC004856

**GeneID (NCBI):**

23413

**UNIPROT ID:**

P62166

**Full Name:**

frequenin homolog (Drosophila)

**Calculated MW:**

22 kDa

**Observed MW:**

22 kDa

**Purification Method:**

Antigen affinity purification

**Recommended Dilutions:**

WB 1:1000-1:4000

IP 0.5-4.0 µg for 1.0-3.0 mg of total protein lysate

IHC 1:50-1:500

## Applications

**Tested Applications:**

FC, IHC, IP, WB, ELISA

**Cited Applications:**

WB

**Species Specificity:**

human, mouse, rat

**Cited Species:**

mouse

**Note-IHC: suggested antigen retrieval with TE buffer pH 9.0; (\*) Alternatively, antigen retrieval may be performed with citrate buffer pH 6.0**

**Positive Controls:**

**WB :** mouse brain tissue, A431 cells, HepG2 cells, human brain tissue, mouse cerebellum tissue, PC-3 cells, rat brain tissue, SH-SY5Y cells

**IP :** mouse brain tissue,

**IHC :** human cerebellum tissue, human brain tissue

## Background Information

NCS1 is a member of the neuronal calcium sensor gene family. It regulates G protein-coupled receptor phosphorylation in a calcium-dependent manner and can substitute for calmodulin. The protein is associated with secretory granules and modulates synaptic transmission and synaptic plasticity.

## Notable Publications

Author	Pubmed ID	Journal	Application
Bechara J Saab	19755107	Neuron	WB
Ho-Suk Mun	26639399	Sci Rep	WB

## Storage

**Storage:**

Store at -20°C. Stable for one year after shipment.

**Storage Buffer:**

PBS with 0.02% sodium azide and 50% glycerol pH 7.3.

Aliquoting is unnecessary for -20°C storage

\*\*\* 20ul sizes contain 0.1% BSA

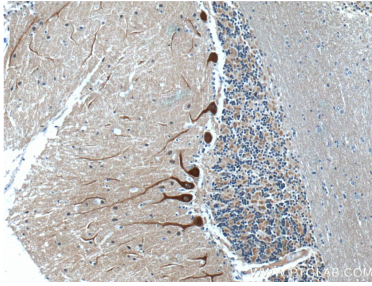
For technical support and original validation data for this product please contact:

T: 1 (888) 4PTGLAB (1-888-478-4522) (toll free in USA), or 1(312) 455-8498 (outside USA)

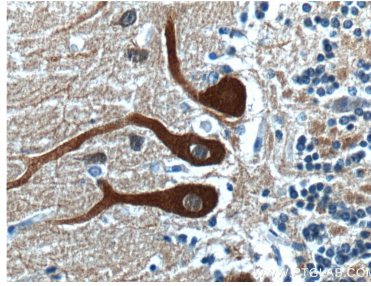
E: [proteintech@ptglab.com](mailto:proteintech@ptglab.com)  
W: [ptglab.com](http://ptglab.com)

This product is exclusively available under Proteintech Group brand and is not available to purchase from any other manufacturer.

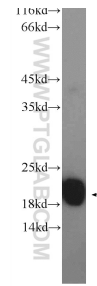
## Selected Validation Data



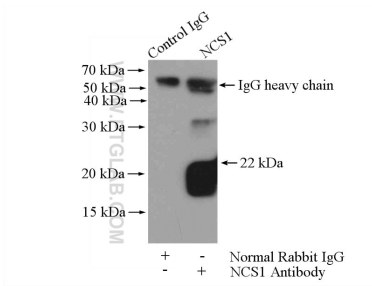
Immunohistochemical analysis of paraffin-embedded human cerebellum tissue slide using 10506-2-AP (NCS1 antibody at dilution of 1:200 (under 10x lens).



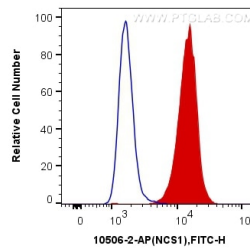
Immunohistochemical analysis of paraffin-embedded human cerebellum tissue slide using 10506-2-AP (NCS1 antibody at dilution of 1:200 (under 40x lens).



mouse brain tissue were subjected to SDS PAGE followed by western blot with 10506-2-AP (NCS1 antibody at dilution of 1:2000 incubated at room temperature for 1.5 hours.



IP result of anti-NCS1 (IP:10506-2-AP, 4ug; Detection:10506-2-AP 1:1000) with mouse brain tissue lysate 4000ug.



1X10<sup>6</sup> SH-SY5Y cells were intracellularly stained with 0.2 ug Anti-Human NCS1 (10506-2-AP) and CoraLite@488-Conjugated AffiniPure Goat Anti-Rabbit IgG(H+L) at dilution 1:1000 (red), or 0.2 ug Control Antibody. Cells were fixed with 4% PFA and permeabilized with Flow Cytometry Perm Buffer (PF00011-C).