

For Research Use Only

# MCM2 Polyclonal antibody, PBS Only

Catalog Number: 10513-1-PBS

Featured Product



## Basic Information

**Catalog Number:**

10513-1-PBS

**Size:**

100ug, Concentration: 1 mg/ml by Nanodrop;

**Source:**

Rabbit

**Isotype:**

IgG

**Immunogen Catalog Number:**

AG0798

**GenBank Accession Number:**

BC007670

**GeneID (NCBI):**

4171

**UNIPROT ID:**

P49736

**Full Name:**

minichromosome maintenance complex component 2

**Calculated MW:**

102 kDa

**Observed MW:**

116-125 kDa

**Purification Method:**

Antigen affinity purification

## Applications

**Tested Applications:**

WB, IHC, IF/ICC, IF-P, FC (Intra), IP, Indirect ELISA

**Species Specificity:**

human, mouse

## Background Information

The MCM2-7 complex forms the core of the replicative helicase which acts as the molecular motor that uses ATP binding and hydrolysis to fuel the unwinding of double-stranded DNA at the replication fork in eukaryotes. This complex is the putative replicative helicase essential for 'once per cell cycle' DNA replication initiation and elongation in eukaryotic cells. MCM2, also named CDCL1 and BM28, is a human nuclear protein that plays an important role in 2 crucial steps of the cell cycle, namely, onset of DNA replication and cell division.

## Storage

**Storage:**

Store at -80°C.

**Storage Buffer:**

PBS only, pH7.3

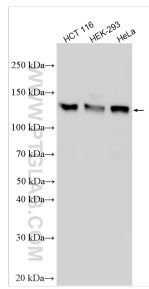
For technical support and original validation data for this product please contact:

T: 1 (888) 4PTGLAB (1-888-478-4522) (toll free in USA), or 1(312) 455-8498 (outside USA)

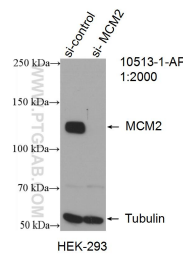
E: [proteintech@ptglab.com](mailto:proteintech@ptglab.com)  
W: [ptglab.com](http://ptglab.com)

This product is exclusively available under Proteintech Group brand and is not available to purchase from any other manufacturer.

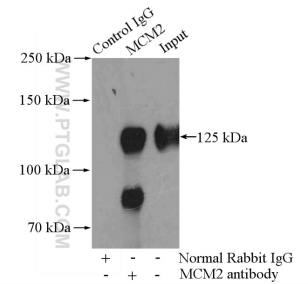
## Selected Validation Data



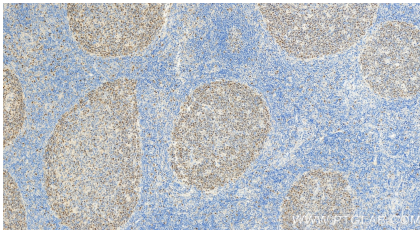
Various lysates were subjected to SDS PAGE followed by western blot with 10513-1-AP (MCM2 antibody) at dilution of 1:4000 incubated at room temperature for 1.5 hours. This data was developed using the same antibody clone with 10513-1-PBS in a different storage buffer formulation.



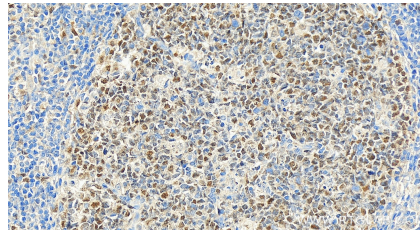
WB result of MCM2 antibody (10513-1-AP; 1:2000; incubated at room temperature for 1.5 hours) with sh-Control and sh-MCM2 transfected HEK-293 cells. This data was developed using the same antibody clone with 10513-1-PBS in a different storage buffer formulation.



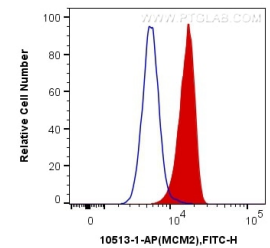
IP result of anti-MCM2 (IP:10513-1-AP, 4ug; Detection:10513-1-AP 1:800) with HEK-293 cells lysate 2800ug. This data was developed using the same antibody clone with 10513-1-PBS in a different storage buffer formulation.



Immunohistochemical analysis of paraffin-embedded human tonsillitis tissue slide using 10513-1-AP (MCM2 antibody) at dilution of 1:2000 (under 20x lens). Heat mediated antigen retrieval with Tris-EDTA buffer (pH 9.0). This data was developed using the same antibody clone with 10513-1-PBS in a different storage buffer formulation.



Immunohistochemical analysis of paraffin-embedded human tonsillitis tissue slide using 10513-1-AP (MCM2 antibody) at dilution of 1:2000 (under 20x lens). Heat mediated antigen retrieval with Tris-EDTA buffer (pH 9.0). This data was developed using the same antibody clone with 10513-1-PBS in a different storage buffer formulation.



$1 \times 10^6$  NIH/3T3 cells were intracellularly stained with 0.2 ug Anti-Human MCM2 (10513-1-AP) and CoraLite®488-Conjugated AffiniPure Goat Anti-Rabbit IgG(H+L) at dilution 1:1000 (red), or 0.2 ug Control Antibody. Cells were fixed and permeabilized with Transcription Factor Staining Buffer Kit (PF00011). This data was developed using the same antibody clone with 10513-1-PBS in a different storage buffer formulation.