

For Research Use Only

# LASP1 Polyclonal antibody

Catalog Number: 10515-1-AP

Featured Product

30 Publications



## Basic Information

### Catalog Number:

10515-1-AP

### Size:

150ul, Concentration: 650 ug/ml by Nanodrop and 440 ug/ml by Bradford method using BSA as the standard;

### Source:

Rabbit

### Isotype:

IgG

### Immunogen Catalog Number:

AG0800

### GenBank Accession Number:

BC012460

### GeneID (NCBI):

3927

### ENSEMBL Gene ID:

ENSG00000002834

### UNIPROT ID:

Q14847

### Full Name:

LIM and SH3 protein 1

### Calculated MW:

30 kDa

### Observed MW:

38-40 kDa

### Purification Method:

Antigen affinity purification

### Recommended Dilutions:

WB 1:2000-1:16000

IP 0.5-4.0 ug for 1.0-3.0 mg of total protein lysate

IHC 1:50-1:500

IF/ICC 1:800-1:3200

## Applications

### Tested Applications:

WB, IHC, IF/ICC, IP, ELISA

### Cited Applications:

WB, IHC, IF, IP, CoIP

### Species Specificity:

human, mouse

### Cited Species:

human, mouse, rat

**Note-IHC: suggested antigen retrieval with TE buffer pH 9.0; (\*) Alternatively, antigen retrieval may be performed with citrate buffer pH 6.0**

### Positive Controls:

**WB**: A431 cells, MDA-MB-453s cells, mouse brain tissue, PC-3 cells, MCF-7 cells, Jurkat cells, SGC-7901 cells, SKOV-3 cells

**IP**: A549 cells,

**IHC**: human colon cancer tissue, human breast cancer tissue, human liver cancer tissue

**IF/ICC**: A549 cells,

## Background Information

LASP1 (LIM and SH3 protein 1), also known as MLN50, is a 261 amino acid protein that localizes to both the cytoplasm and the cytoskeleton (PMID: 7589475). LASP1 consists of an N-terminal LIM-domain with two zinc finger motifs, followed by two central actin-binding nebulin repeats, flanked by a linker region and a C-terminal SH3 domain (PMID: 17177073, 9848085). LASP-1 interacts with F-Actin and plays an important role in the regulation of Actin-associated cytoskeletal organization. Agonist-dependent changes in LASP1 phosphorylation may regulate Actin-related ion transport activities in epithelial cells (PMID: 15465019, 12571245). Overexpression of LASP-1 is associated with breast cancer, and plays a role in tumor transformation and metastasis (PMID: 17956604).

## Notable Publications

Author	Pubmed ID	Journal	Application
Stephanie L Pollitt	32997597	Mol Biol Cell	WB, IHC
Le-Le Wang	27696291	Tumour Biol	WB
Yan-Yan Du	26414725	J Gastroenterol Hepatol	WB, IHC

## Storage

### Storage:

Store at -20°C. Stable for one year after shipment.

### Storage Buffer:

PBS with 0.02% sodium azide and 50% glycerol pH 7.3.

Aliquoting is unnecessary for -20°C storage

\*\*\* 20ul sizes contain 0.1% BSA

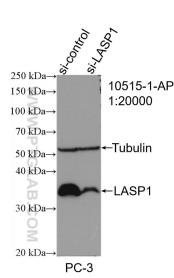
For technical support and original validation data for this product please contact:

T: 1 (888) 4PTGLAB (1-888-478-4522) (toll free in USA), or 1(312) 455-8498 (outside USA)

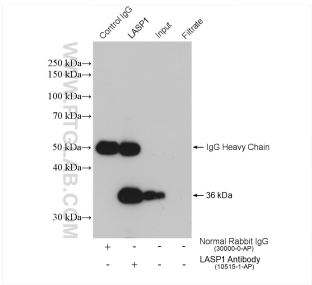
E: [proteintech@ptglab.com](mailto:proteintech@ptglab.com)  
W: [ptglab.com](http://ptglab.com)

This product is exclusively available under Proteintech Group brand and is not available to purchase from any other manufacturer.

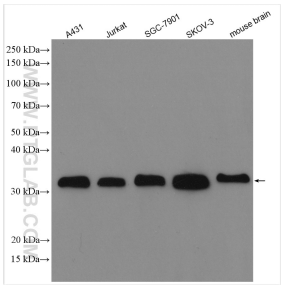
Selected Validation Data



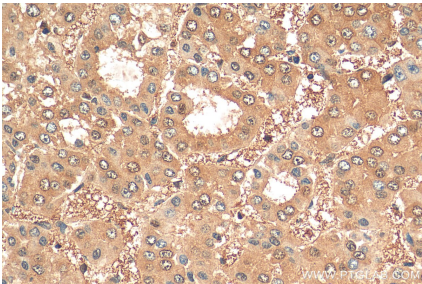
WB result of LASP1 antibody (10515-1-AP; 1:20000; incubated at room temperature for 1.5 hours) with sh-Control and sh-LASP1 transfected PC-3 cells.



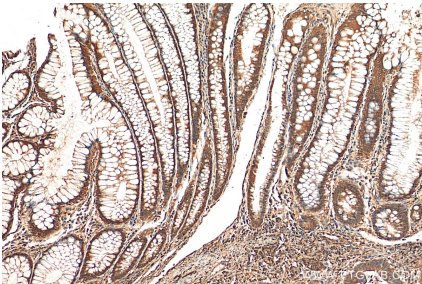
IP result of anti-LASP1 (IP:10515-1-AP, 4ug; Detection:10515-1-AP 1:8000) with A549 cells lysate 600 ug.



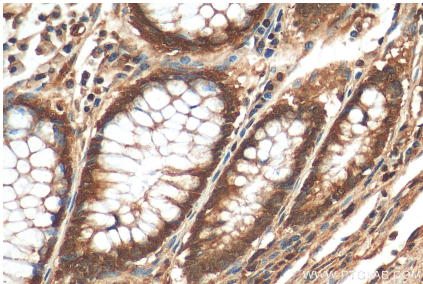
Various lysates were subjected to SDS PAGE followed by western blot with 10515-1-AP (LASP1 antibody) at dilution of 1:8000 incubated at room temperature for 1.5 hours.



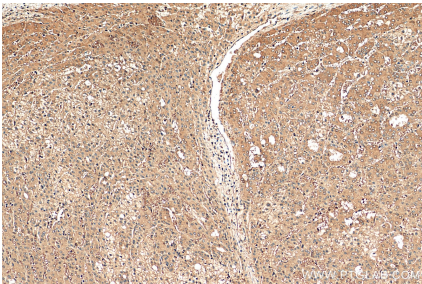
Immunohistochemical analysis of paraffin-embedded human liver cancer tissue slide using 10515-1-AP (LASP1 antibody) at dilution of 1:200 (under 40x lens). Heat mediated antigen retrieval with Tris-EDTA buffer (pH 9.0).



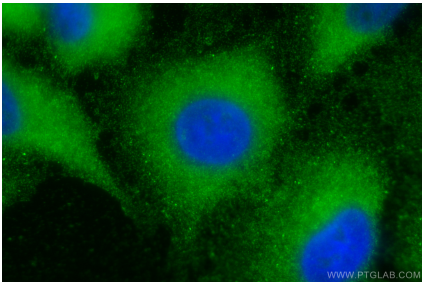
Immunohistochemical analysis of paraffin-embedded human colon cancer tissue slide using 10515-1-AP (LASP1 antibody) at dilution of 1:200 (under 10x lens). Heat mediated antigen retrieval with Tris-EDTA buffer (pH 9.0).



Immunohistochemical analysis of paraffin-embedded human colon cancer tissue slide using 10515-1-AP (LASP1 antibody) at dilution of 1:200 (under 40x lens). Heat mediated antigen retrieval with Tris-EDTA buffer (pH 9.0).



Immunohistochemical analysis of paraffin-embedded human liver cancer tissue slide using 10515-1-AP (LASP1 antibody) at dilution of 1:200 (under 10x lens). Heat mediated antigen retrieval with Tris-EDTA buffer (pH 9.0).



Immunofluorescent analysis of (-20°C Methanol) fixed A549 cells using LASP1 antibody (10515-1-AP) at dilution of 1:1600 and CoraLite®488-Conjugated Goat Anti-Rabbit IgG(H+L).