

For Research Use Only

PPP1R2 Polyclonal antibody

Catalog Number: 10516-1-AP



Basic Information

Catalog Number:

10516-1-AP

Size:

150ul, Concentration: 300 ug/ml by Nanodrop;

Source:

Rabbit

Isotype:

IgG

Immunogen Catalog Number:

AG0805

GenBank Accession Number:

BC007655

GeneID (NCBI):

5504

UNIPROT ID:

P41236

Full Name:

protein phosphatase 1, regulatory (inhibitor) subunit 2

Calculated MW:

23 kDa

Observed MW:

23-30 kDa

Purification Method:

Antigen affinity purification

Recommended Dilutions:

WB 1:1000-1:4000

Applications

Tested Applications:

WB, ELISA

Species Specificity:

human, mouse, rat

Positive Controls:

WB : HeLa cells, Jurkat cells, MCF-7 cells

Background Information

PPP1R2 (PHOSPHATASE INHIBITOR 2) forms heterodimer with phosphatase type-1 (PP1). Activity of the complex can regulated by a series of phosphorylations/ phosphorylations events on PPP1R2, functioning in some important process in vivo.

Storage

Storage:

Store at -20°C. Stable for one year after shipment.

Storage Buffer:

PBS with 0.02% sodium azide and 50% glycerol pH 7.3.

Aliquoting is unnecessary for -20°C storage

*** 20ul sizes contain 0.1% BSA

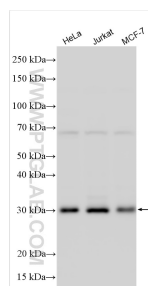
For technical support and original validation data for this product please contact:

T: 1 (888) 4PTGLAB (1-888-478-4522) (toll free in USA), or 1(312) 455-8498 (outside USA)

E: proteintech@ptglab.com
W: ptglab.com

This product is exclusively available under Proteintech Group brand and is not available to purchase from any other manufacturer.

Selected Validation Data



HeLa cells were subjected to SDS PAGE followed by western blot with 10516-1-AP (PPP1R2 antibody) at dilution of 1:2000 incubated at room temperature for 1.5 hours.