

CRMP5 Polyclonal antibody

Catalog Number: 10525-1-AP

3 Publications

Basic Information

Catalog Number:

10525-1-AP

Size:

150ul, Concentration: 800 ug/ml by Nanodrop;

Source:

Rabbit

Isotype:

IgG

Immunogen Catalog Number:

AG0783

GenBank Accession Number:

BC002874

GeneID (NCBI):

56896

UNIPROT ID:

Q9BPU6

Full Name:

dihydropyrimidinase-like 5

Calculated MW:

61 kDa

Observed MW:

61 kDa

Purification Method:

Antigen affinity purification

Recommended Dilutions:

WB 1:2000-1:12000

IP 0.5-4.0 ug for 1.0-3.0 mg of total protein lysate

IHC 1:50-1:500

IF/ICC 1:50-1:500

Applications

Tested Applications:

WB, IHC, IF/ICC, IP, ELISA

Cited Applications:

WB, IHC, IF, ColP

Species Specificity:

human, mouse, rat

Cited Species:

human, mouse

Note-IHC: suggested antigen retrieval with TE buffer pH 9.0; (*) Alternatively, antigen retrieval may be performed with citrate buffer pH 6.0

Positive Controls:

WB : mouse brain tissue, rat brain tissue

IP : mouse brain tissue,

IHC : mouse brain tissue,

IF/ICC : SH-SY5Y cells,

Background Information

DPYSL5(Dihydropyrimidinase-related protein 5) is also named as CRMP5, ULIP6 and belongs to the hydantoinase/dihydropyrimidinase subfamily. It may have a function in neuronal differentiation and/or axon growth. SCLCs universally express CRMP5 and in thymoma, none of the CRMPs are detected by immunohistochemistry in tumorous epithelial cells with specific antibodies including CRMP5. The normal CRMP5 is probably not expressed by tumorous epithelial cells.(PMID:16519949).

Notable Publications

Author	Pubmed ID	Journal	Application
Yunqiang Zhang	35400238	J Int Med Res	WB,IHC
Marina Reichlmeir	39615799	Neurobiol Dis	WB,IF,ColP
Bae Narkhyun N	23376484	J Proteomics	WB

Storage

Storage:

Store at -20°C. Stable for one year after shipment.

Storage Buffer:

PBS with 0.02% sodium azide and 50% glycerol pH 7.3.

Aliquoting is unnecessary for -20°C storage

*** 20ul sizes contain 0.1% BSA

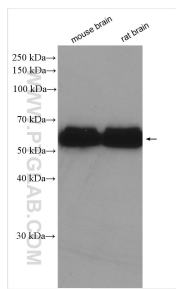
For technical support and original validation data for this product please contact:

T: 1 (888) 4PTGLAB (1-888-478-4522) (toll free in USA), or 1(312) 455-8498 (outside USA)

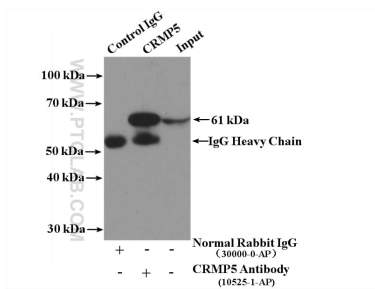
E: proteintech@ptglab.com
W: ptglab.com

This product is exclusively available under Proteintech Group brand and is not available to purchase from any other manufacturer.

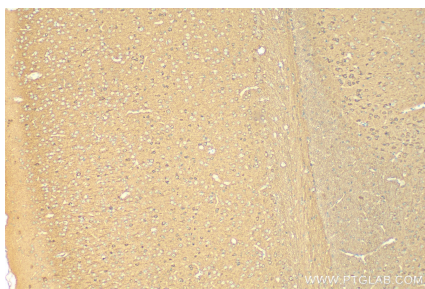
Selected Validation Data



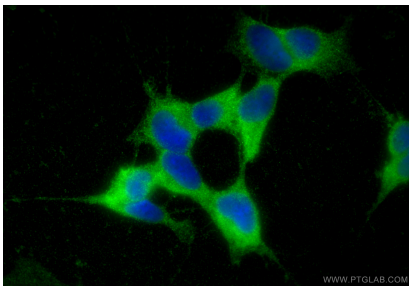
Various lysates were subjected to SDS PAGE followed by western blot with 10525-1-AP (CRMP5 antibody) at dilution of 1:6000 incubated at room temperature for 1.5 hours.



IP result of anti-CRMP5 (IP:10525-1-AP, 4ug; Detection:10525-1-AP 1:2000) with mouse brain tissue lysate 4000ug.



Immunohistochemical analysis of paraffin-embedded mouse brain tissue slide using 10525-1-AP (CRMP5 antibody) at dilution of 1:200 (under 10x lens). Heat mediated antigen retrieval with Tris-EDTA buffer (pH 9.0).



Immunofluorescent analysis of (-20°C Ethanol) fixed SH-SY5Y cells using CRMP5 antibody (10525-1-AP) at dilution of 1:200 and Multi-rAb CoraLite® Plus 488-Goat Anti-Rabbit Recombinant Secondary Antibody (H+L) (RGAR002).